



[Go to Product page](#)

Datasheet for ABIN768642
anti-IGF2 antibody (AA 81-93)

1 Image

Overview

| | |
|----------------------|-------------------------------------|
| Quantity: | 100 µg |
| Target: | IGF2 |
| Binding Specificity: | AA 81-93 |
| Reactivity: | Human |
| Host: | Goat |
| Clonality: | Polyclonal |
| Conjugate: | This IGF2 antibody is un-conjugated |
| Application: | Immunohistochemistry (IHC), ELISA |

Product Details

| | |
|-------------------|---|
| Purpose: | IGF2 (aa81-93) |
| Immunogen: | Peptide with sequence ETYCATPAKSERD, from the internal region of the protein sequence according to NP_000603.1, NP_001121070.1. |
| Sequence: | ETYCATPAKS ERD |
| Isotype: | IgG |
| Specificity: | This antibody is expected to recognize both reported isoforms (NP_000603.1, NP_001121070.1). Reported variants represent identical protein: NP_000603.1, NP_001007140.2 |
| Cross-Reactivity: | Cow, Dog, Human, Mouse, Pig, Rat |
| Purification: | Purified from goat serum by ammonium sulphate precipitation followed by antigen affinity |

Product Details

chromatography using the immunizing peptide.

Grade: Verified

Target Details

Target: IGF2

Alternative Name: IGF2 ([IGF2 Products](#))

Background: IGF2, insulin-like growth factor 2 (somatomedin A), C11orf43, FLJ22066, FLJ44734, IGF-II, PP9974, OTTHUMP00000220677, insulin-like growth factor II, insulin-like growth factor type 2, somatomedin-A

Gene ID: 3481, 16002, 24483

NCBI Accession: [NP_000603](#), [NP_001121070](#)

Pathways: [Hormone Activity](#), [Regulation of Hormone Metabolic Process](#), [Regulation of Hormone Biosynthetic Process](#), [Regulation of Carbohydrate Metabolic Process](#), [Activated T Cell Proliferation](#)

Application Details

Application Notes: Immunohistochemistry: In paraffin embedded Human Cortex shows axonal staining.
Recommended concentration: 5-10 µg/mL.
Peptide ELISA: antibody detection limit dilution 1:64000.

Restrictions: For Research Use only

Handling

Format: Liquid

Concentration: 0.5 mg/mL

Buffer: Supplied at 0.5 mg/mL in Tris saline, 0.02 % sodium azide, pH 7.3 with 0.5 % bovine serum albumin.

Preservative: Sodium azide

Precaution of Use: This product contains Sodium azide: a POISONOUS AND HAZARDOUS SUBSTANCE which should be handled by trained staff only.

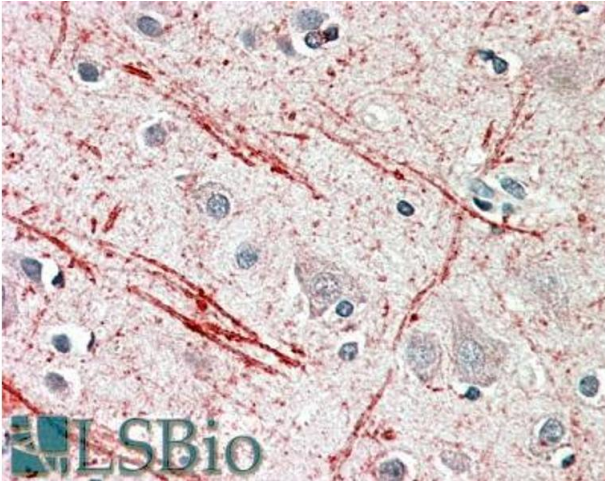
Handling Advice: Minimize freezing and thawing.

Handling

Storage: -20 °C

Storage Comment: Aliquot and store at -20°C, with minimal freeze/thawing. A working aliquot may be refrigerated at 4°C for a few weeks and still remain viable.

Images



Immunohistochemistry

Image 1. ABIN768642 (5µg/ml) staining of paraffin embedded Human Cortex. Steamed antigen retrieval with citrate buffer pH 6, AP-staining.