

Datasheet for ABIN768655
anti-MTHFD1L antibody (AA 535-538)



[Go to Product page](#)

3 Images

Overview

Quantity:	100 µg
Target:	MTHFD1L
Binding Specificity:	AA 535-538
Reactivity:	Human, Mouse, Rat
Host:	Goat
Clonality:	Polyclonal
Conjugate:	This MTHFD1L antibody is un-conjugated
Application:	Western Blotting (WB), ELISA, Immunohistochemistry (IHC)

Product Details

Purpose:	MTHFD1L (aa535-538)
Immunogen:	Peptide with sequence C-DTNRFLRKITIGQ, from the internal region of the protein sequence according to NP_056255.2.
Sequence:	DTNRFLRKI TIGQ
Isotype:	IgG
Cross-Reactivity:	Cow, Dog, Human, Mouse, Pig, Rat
Purification:	Purified from goat serum by ammonium sulphate precipitation followed by antigen affinity chromatography using the immunizing peptide.
Grade:	Verified

Target Details

Target:	MTHFD1L
Alternative Name:	MTHFD1L (MTHFD1L Products)
Background:	MTHFD1L, methylenetetrahydrofolate dehydrogenase (NADP+ dependent) 1-like, DKFZp586G1517, FLJ21145, FTHFSDC1, MTC1THFS, dJ292B18.2, 10-formyl-THF synthetase, formyltetrahydrofolate synthetase domain containing 1, mitochondrial C1-tetrahydrofolate synthase
Molecular Weight:	106kDa according to NP_056255.2
Gene ID:	25902, 270685, 361472
NCBI Accession:	NP_056255

Application Details

Application Notes:	Immunohistochemistry: Paraffin embedded Human Kidney. Recommended concentration: 5 µg/mL. Western Blot: Approx 110 kDa band observed in Human Brain (Cerebellum) (calculated MW of 106 kDa according to NP_056255.2). The same band is observed in lysates of cell line NIH3T3, Mouse Brain and Rat Brain. Recommended concentration: 0.1-0.3 µg/mL. Prima Peptide ELISA: antibody detection limit dilution 1:32000.
Comment:	Additional validation: This antibody has been successfully used in the following paper: Sikorski et al. (2018) PMID: 30377371.
Restrictions:	For Research Use only

Handling

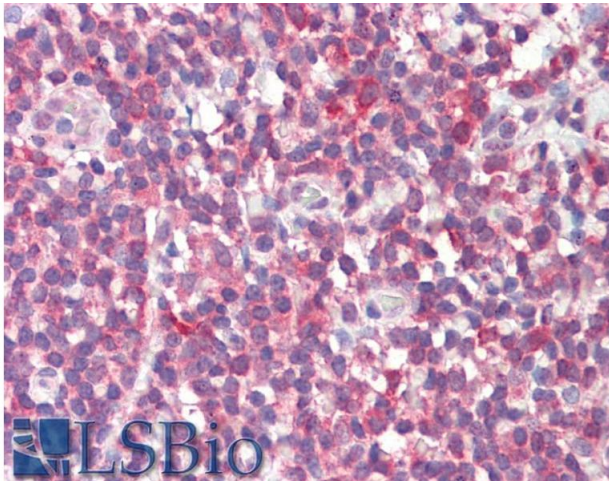
Format:	Liquid
Concentration:	0.5 mg/mL
Buffer:	Supplied at 0.5 mg/mL in Tris saline, 0.02 % sodium azide, pH 7.3 with 0.5 % bovine serum albumin.
Preservative:	Sodium azide
Precaution of Use:	This product contains Sodium azide: a POISONOUS AND HAZARDOUS SUBSTANCE which should be handled by trained staff only.
Handling Advice:	Minimize freezing and thawing.

Handling

Storage: -20 °C

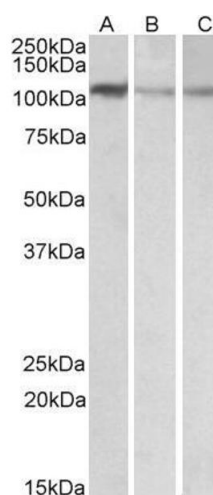
Storage Comment: Aliquot and store at -20°C, with minimal freeze/thawing. A working aliquot may be refrigerated at 4°C for a few weeks and still remain viable.

Images



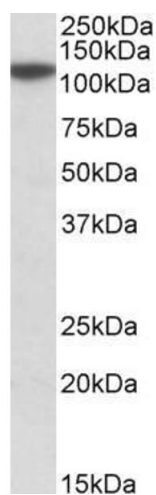
Immunohistochemistry

Image 1. ABIN768655 (5µg/ml) staining of paraffin embedded Human Tonsil. Steamed antigen retrieval with citrate buffer pH 6, AP-staining.



Western Blotting

Image 2. ABIN768655 (0.1µg/ml) staining of NIH3T3 (A), Mouse Brain (B) and Rat Brain (C) lysates (35µg protein in RIPA buffer). Detected by chemiluminescence.



Western Blotting

Image 3. ABIN768655 (0.1µg/ml) staining of Human Cerebellum lysate (35µg protein in RIPA buffer). Detected by chemiluminescence.