

Datasheet for ABIN768656
anti-ACPP antibody (AA 269-282)



[Go to Product page](#)

2 Images

Overview

Quantity:	100 µg
Target:	ACPP
Binding Specificity:	AA 269-282
Reactivity:	Human
Host:	Goat
Clonality:	Polyclonal
Application:	Western Blotting (WB), ELISA, Immunohistochemistry (IHC)

Product Details

Purpose:	ACPP / PAP (aa269-282)
Immunogen:	Peptide with sequence C-NHMKRATQIPSYKK, from the internal region of the protein sequence according to NP_001127666.1, NP_001090.2.
Sequence:	NHMKRATQIP SYKK
Isotype:	IgG
Specificity:	This antibody is expected to recognize both reported isoforms (NP_001127666.1, NP_001090.2).
Cross-Reactivity:	Human
Purification:	Purified from goat serum by ammonium sulphate precipitation followed by antigen affinity chromatography using the immunizing peptide.
Grade:	Verified

Target Details

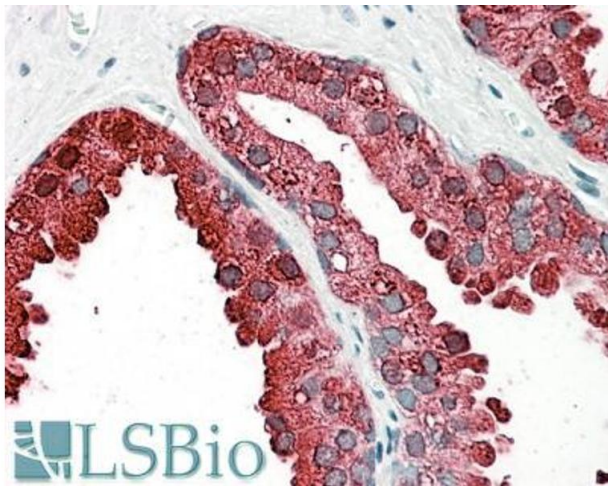
Target:	ACPP
Alternative Name:	ACPP (ACPP Products)
Background:	ACPP, acid phosphatase, prostate, ACP-3, ACP3, PAP, OTTHUMP00000216107, prostatic acid phosphatase, prostatic acid phosphotase
Molecular Weight:	48.3kDa according to NP_001127666.1
Gene ID:	55
NCBI Accession:	NP_001127666 , NP_001090
Pathways:	Synaptic Membrane , Ribonucleoside Biosynthetic Process

Application Details

Application Notes:	<p>Immunohistochemistry: In paraffin embedded Human Prostate shows reticulate cytoplasm staining, more intens towards the lumen of the gland. Recommended concentration, 3-5 µg/mL.</p> <p>Western Blot: Approx 50 kDa band observed in Human Prostate lysates (calculated MW of 48.3 kDa according to NP_001127666.1). Recommended concentration: 0.01-0.03 µg/mL.</p> <p>Peptide ELISA: antibody detection limit dilution 1:32000.</p>
Restrictions:	For Research Use only

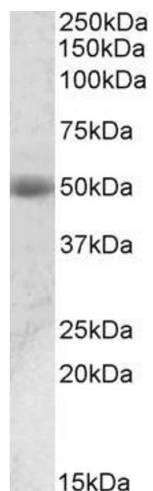
Handling

Format:	Liquid
Concentration:	0.5 mg/mL
Buffer:	Supplied at 0.5 mg/mL in Tris saline, 0.02 % sodium azide, pH 7.3 with 0.5 % bovine serum albumin.
Preservative:	Sodium azide
Precaution of Use:	This product contains Sodium azide: a POISONOUS AND HAZARDOUS SUBSTANCE which should be handled by trained staff only.
Handling Advice:	Minimize freezing and thawing.
Storage:	-20 °C
Storage Comment:	Aliquot and store at -20°C, with minimal freeze/thawing. A working aliquot may be refrigerated at 4°C for a few weeks and still remain viable.



Immunohistochemistry

Image 1. ABIN768656 (3.8µg/ml) staining of paraffin embedded Human Prostate. Steamed antigen retrieval with citrate buffer pH 6, AP-staining.



Western Blotting

Image 2. ABIN768656 (0.01µg/ml) staining of Human Prostate lysate (35µg protein in RIPA buffer). Primary incubation was 1 hour. Detected by chemiluminescence.