



[Go to Product page](#)

Datasheet for ABIN768669
anti-COMT antibody (C-Term)

3 Images

Overview

Quantity:	50 µg
Target:	COMT
Binding Specificity:	C-Term
Reactivity:	Human
Host:	Rabbit
Clonality:	Polyclonal
Conjugate:	This COMT antibody is un-conjugated
Application:	Immunohistochemistry (IHC), Immunohistochemistry (Paraffin-embedded Sections) (IHC (p))

Product Details

Brand:	IHC-plus™
Immunogen:	Synthetic 19 amino acid peptide from C-terminus of human COMT. Percent identity with other species by BLAST analysis: Human, Gorilla (100%), Monkey (95%), Hamster, Rabbit (84%). Type of Immunogen: Synthetic peptide
Specificity:	Human COMT. BLAST analysis of the peptide immunogen showed no homology with other human proteins.
Predicted Reactivity:	Percent identity with other species by BLAST analysis: Human, Gorilla (100%) Monkey (95%) Hamster, Rabbit (84%).
Purification:	Immunoaffinity purified

Target Details

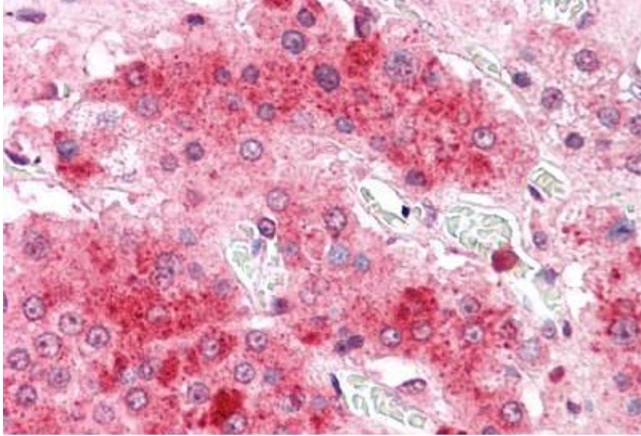
Target:	COMT
Alternative Name:	COMT (COMT Products)
Background:	Name/Gene ID: COMT Synonyms: COMT, Catechol O-methyltransferase, Catechol-O-methyltransferase
Gene ID:	1312
Pathways:	Steroid Hormone Biosynthesis , SARS-CoV-2 Protein Interactome

Application Details

Application Notes:	Approved: IHC, IHC-P (5 - 7.5 µg/mL)
Comment:	Target Species of Antibody: Human
Restrictions:	For Research Use only

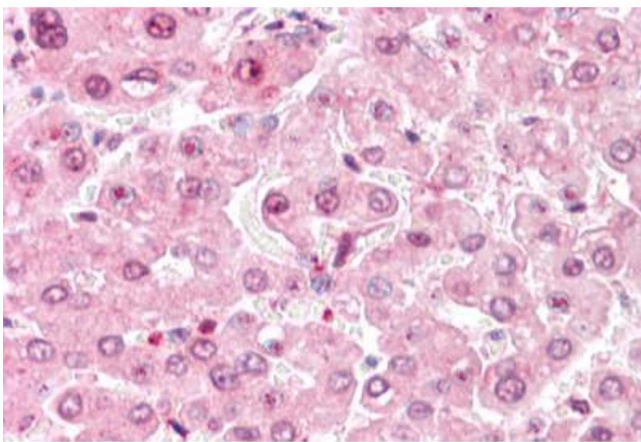
Handling

Format:	Liquid
Concentration:	Lot specific
Buffer:	PBS, less than 0.1 % sodium azide.
Preservative:	Sodium azide
Precaution of Use:	This product contains Sodium azide: a POISONOUS AND HAZARDOUS SUBSTANCE which should be handled by trained staff only.
Handling Advice:	avoid freeze thaw cycles.
Storage:	4 °C, -20 °C
Storage Comment:	Aliquot and store undiluted at -20°C or below for up to 1 year. Can be stored undiluted at 4°C for up to 1 month. Avoid freeze-thaw cycles.
Expiry Date:	12 months



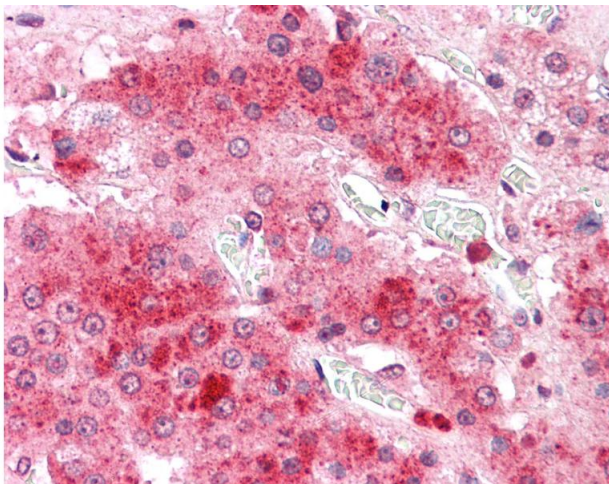
Immunohistochemistry (Formalin-fixed Paraffin-embedded Sections)

Image 1. Human Adrenal: Formalin-Fixed, Paraffin-Embedded (FFPE)



Immunohistochemistry (Formalin-fixed Paraffin-embedded Sections)

Image 2. Human Liver: Formalin-Fixed, Paraffin-Embedded (FFPE)



Immunohistochemistry

Image 3. Anti-COMT antibody IHC of human adrenal. Immunohistochemistry of formalin-fixed, paraffin-embedded tissue after heat-induced antigen retrieval.