

Datasheet for ABIN768670  
**anti-Embigin antibody (C-Term)**

## 3 Images

[Go to Product page](#)

## Overview

Quantity:	50 µg
Target:	Embigin (EMB)
Binding Specificity:	C-Term
Reactivity:	Human
Host:	Rabbit
Clonality:	Polyclonal
Application:	Immunohistochemistry (IHC), Immunohistochemistry (Paraffin-embedded Sections) (IHC (p))

## Product Details

Brand:	IHC-plus™
Immunogen:	Synthetic 17 amino acid peptide from C-terminus of human EMB. Percent identity with other species by BLAST analysis: Human, Gorilla, Gibbon (100%), Monkey (94%), Marmoset, Elephant (88%), Dog, Rabbit (82%).  Type of Immunogen: Synthetic peptide
Specificity:	Human EMB. BLAST analysis of the peptide immunogen showed no homology with other human proteins.
Predicted Reactivity:	Percent identity with other species by BLAST analysis: Human, Gorilla, Gibbon (100%) Monkey (94%) Marmoset, Elephant (88%) Dog, Rabbit (82%).
Purification:	Immunoaffinity purified

## Target Details

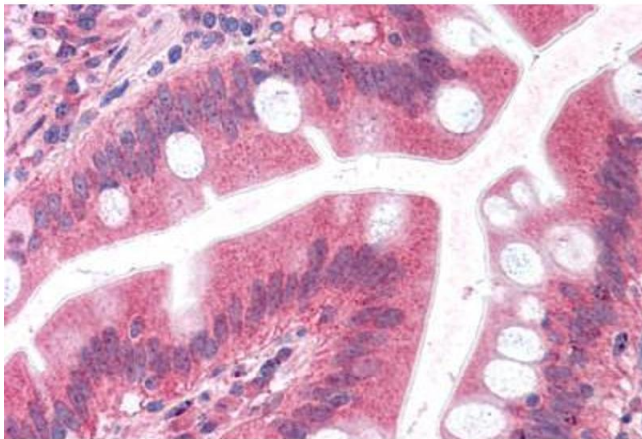
Target:	Embigin (EMB)
Alternative Name:	EMB/ Embigin ( <a href="#">EMB Products</a> )
Background:	Name/Gene ID: EMB  Synonyms: EMB, Embigin homolog (mouse), Embigin, Embigin homolog
Gene ID:	133418

## Application Details

Application Notes:	Approved: IHC, IHC-P (5 - 7.5 µg/mL)
Comment:	Target Species of Antibody: Human
Restrictions:	For Research Use only

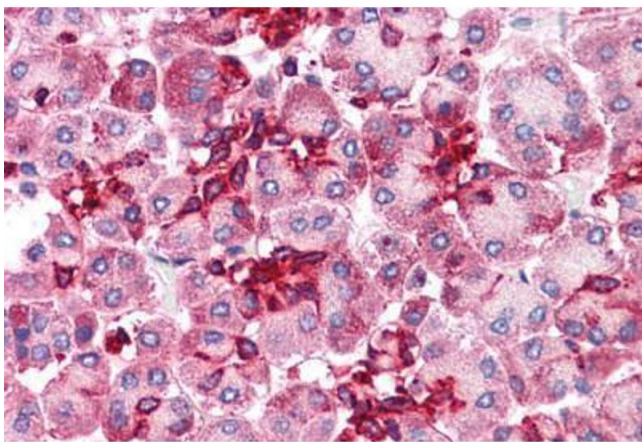
## Handling

Format:	Liquid
Concentration:	Lot specific
Buffer:	PBS, less than 0.1 % sodium azide.
Preservative:	Sodium azide
Precaution of Use:	This product contains Sodium azide: a POISONOUS AND HAZARDOUS SUBSTANCE which should be handled by trained staff only.
Handling Advice:	avoid freeze thaw cycles.
Storage:	4 °C, -20 °C
Storage Comment:	Aliquot and store undiluted at -20°C or below for up to 1 year. Can be stored undiluted at 4°C for up to 1 month. Avoid freeze-thaw cycles.
Expiry Date:	12 months



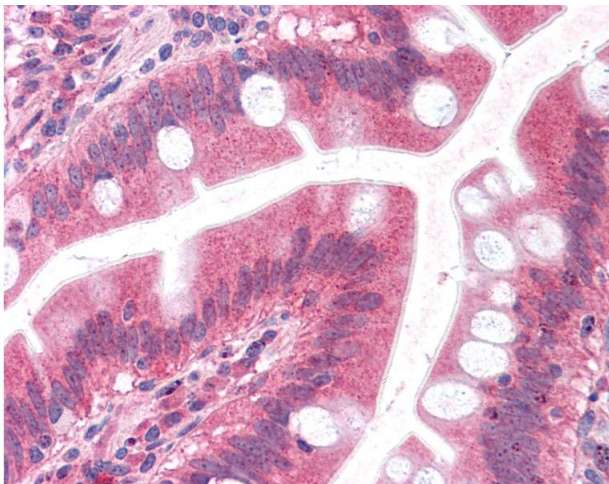
#### Immunohistochemistry (Formalin-fixed Paraffin-embedded Sections)

**Image 1.** Human Small Intestine: Formalin-Fixed, Paraffin-Embedded (FFPE)



#### Immunohistochemistry (Formalin-fixed Paraffin-embedded Sections)

**Image 2.** Human Pancreas: Formalin-Fixed, Paraffin-Embedded (FFPE)



#### Immunohistochemistry

**Image 3.** Anti-EMB antibody IHC of human small intestine. Immunohistochemistry of formalin-fixed, paraffin-embedded tissue after heat-induced antigen retrieval.