

Datasheet for ABIN768673
anti-GPC4 antibody (N-Term)

3 Images

[Go to Product page](#)

Overview

Quantity:	50 µg
Target:	GPC4
Binding Specificity:	N-Term
Reactivity:	Human, Monkey, Rabbit
Host:	Rabbit
Clonality:	Polyclonal
Application:	Immunohistochemistry (IHC), Immunohistochemistry (Paraffin-embedded Sections) (IHC (p))

Product Details

Brand:	IHC-plus™
Immunogen:	Synthetic 16 amino acid peptide from N-terminus of human GPC4 / Glypican 4. Percent identity with other species by BLAST analysis: Human, Gorilla, Monkey, Marmoset, Rabbit (100%), Mouse, Rat, Dog, Panda, Platypus (94%), Opossum, Xenopus (88%). Type of Immunogen: Synthetic peptide
Specificity:	Human GPC4 / Glypican 4. BLAST analysis of the peptide immunogen showed no homology with other human proteins.
Predicted Reactivity:	Percent identity with other species by BLAST analysis: Human, Gorilla, Monkey, Marmoset, Rabbit (100%) Mouse, Rat, Dog, Panda, Platypus (94%) Opossum, Xenopus (88%).
Purification:	Immunoaffinity purified

Target Details

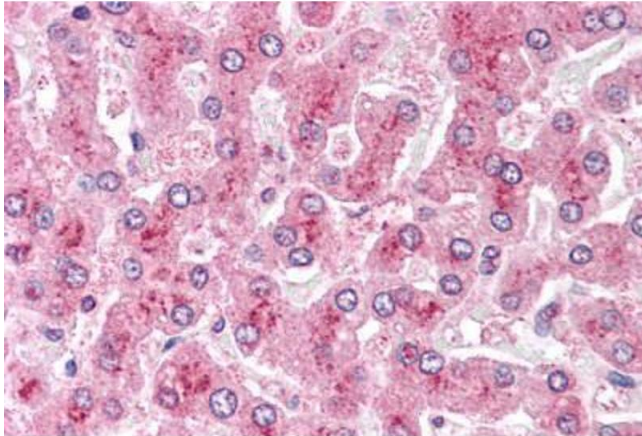
Target:	GPC4
Alternative Name:	GPC4 / Glypican 4 (GPC4 Products)
Background:	Name/Gene ID: GPC4 Synonyms: GPC4, DJ900E8.1 (glypican 4), Glypican 4, Glypican proteoglycan 4, Glypican-4, K-glypican
Gene ID:	2239
Pathways:	Glycosaminoglycan Metabolic Process

Application Details

Application Notes:	Approved: IHC, IHC-P (10 - 12.5 µg/mL)
Comment:	Target Species of Antibody: Human
Restrictions:	For Research Use only

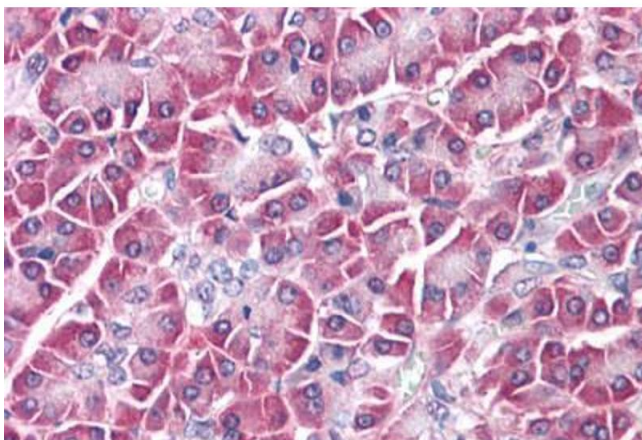
Handling

Format:	Liquid
Concentration:	Lot specific
Buffer:	PBS, less than 0.1 % sodium azide.
Preservative:	Sodium azide
Precaution of Use:	This product contains Sodium azide: a POISONOUS AND HAZARDOUS SUBSTANCE which should be handled by trained staff only.
Handling Advice:	avoid freeze thaw cycles.
Storage:	4 °C,-20 °C
Storage Comment:	Aliquot and store undiluted at -20°C or below for up to 1 year. Can be stored undiluted at 4°C for up to 1 month. Avoid freeze-thaw cycles.
Expiry Date:	12 months



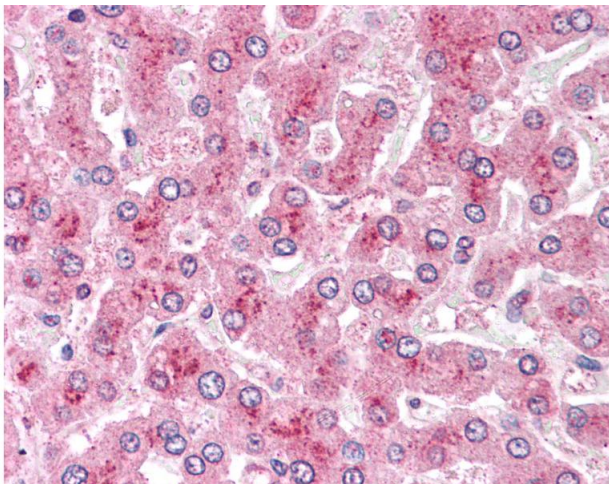
Immunohistochemistry (Formalin-fixed Paraffin-embedded Sections)

Image 1. Human Liver: Formalin-Fixed, Paraffin-Embedded (FFPE)



Immunohistochemistry (Formalin-fixed Paraffin-embedded Sections)

Image 2. Human Pancreas: Formalin-Fixed, Paraffin-Embedded (FFPE)



Immunohistochemistry

Image 3. Anti-GPC4 / Glypican 4 antibody IHC of human liver. Immunohistochemistry of formalin-fixed, paraffin-embedded tissue after heat-induced antigen retrieval.