

Datasheet for ABIN768684
anti-NPTN antibody (N-Term)

3 Images

[Go to Product page](#)

Overview

Quantity:	50 µg
Target:	NPTN
Binding Specificity:	N-Term
Reactivity:	Human, Rabbit, Monkey
Host:	Rabbit
Clonality:	Polyclonal
Conjugate:	This NPTN antibody is un-conjugated
Application:	Immunohistochemistry (IHC), Immunohistochemistry (Paraffin-embedded Sections) (IHC (p))

Product Details

Brand:	IHC-plus™
Immunogen:	Synthetic 16 amino acid peptide from N-terminus of human NPTN. Percent identity with other species by BLAST analysis: Human, Gorilla, Gibbon, Monkey, Marmoset, Rabbit (100%), Rat, Panda, Opossum (94%), Mouse, Bat, Dog, Bovine, Elephant, Pig (88%), Horse (81%). Type of Immunogen: Synthetic peptide
Specificity:	Human NPTN. BLAST analysis of the peptide immunogen showed no homology with other human proteins.
Predicted Reactivity:	Percent identity with other species by BLAST analysis: Human, Gorilla, Gibbon, Monkey, Marmoset, Rabbit (100%) Rat, Panda, Opossum (94%) Mouse, Bat, Dog, Bovine, Elephant, Pig (88%) Horse (81%).

Product Details

Purification: Immunoaffinity purified

Target Details

Target: NPTN

Alternative Name: NPTN / SDR1 ([NPTN Products](#))

Background: Name/Gene ID: NPTN

Synonyms: NPTN, gp65, gp55, Np55, Np65, SDR-1, SDR1, Neuroplastin, SDFR1

Gene ID: 27020

Pathways: [Regulation of long-term Neuronal Synaptic Plasticity](#)

Application Details

Application Notes: Approved: IHC, IHC-P (15 - 20 µg/mL)

Comment: Target Species of Antibody: Human

Restrictions: For Research Use only

Handling

Format: Liquid

Concentration: Lot specific

Buffer: PBS, less than 0.1 % sodium azide.

Preservative: Sodium azide

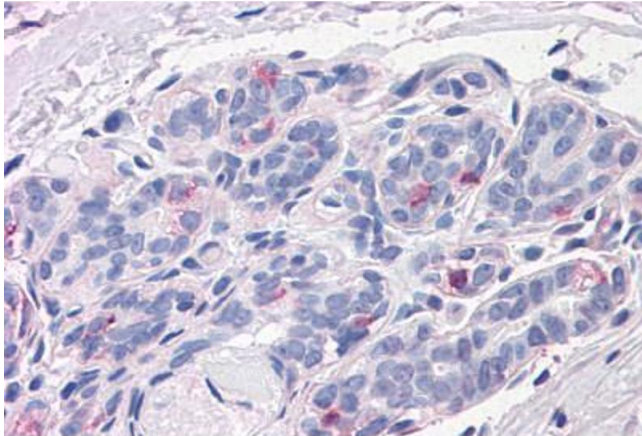
Precaution of Use: This product contains Sodium azide: a POISONOUS AND HAZARDOUS SUBSTANCE which should be handled by trained staff only.

Handling Advice: avoid freeze thaw cycles.

Storage: 4 °C,-20 °C

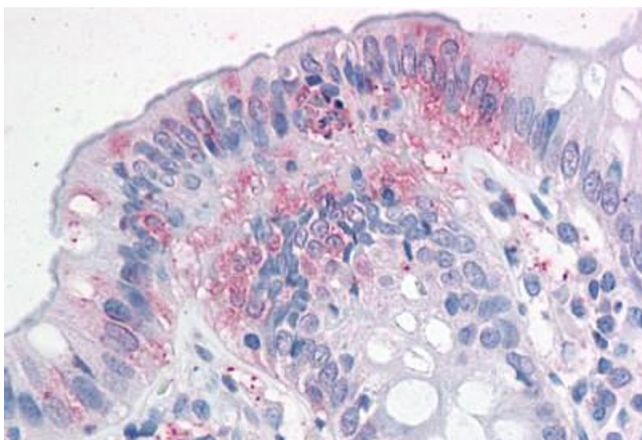
Storage Comment: Aliquot and store undiluted at -20°C or below for up to 1 year. Can be stored undiluted at 4°C for up to 1 month. Avoid freeze-thaw cycles.

Expiry Date: 12 months



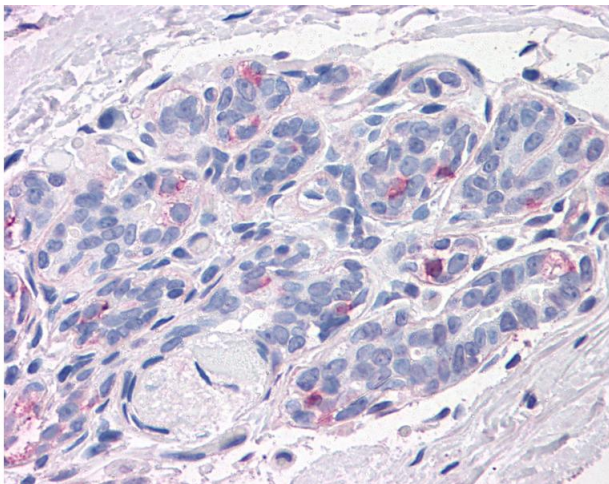
Immunohistochemistry (Formalin-fixed Paraffin-embedded Sections)

Image 1. Human Breast: Formalin-Fixed, Paraffin-Embedded (FFPE)



Immunohistochemistry (Formalin-fixed Paraffin-embedded Sections)

Image 2. Human Colon: Formalin-Fixed, Paraffin-Embedded (FFPE)



Immunohistochemistry

Image 3. Anti-NPTN antibody IHC of human breast. Immunohistochemistry of formalin-fixed, paraffin-embedded tissue after heat-induced antigen retrieval.