

Datasheet for ABIN768688

anti-SLC1A5 antibody (Internal Region)**3** Images[Go to Product page](#)

Overview

Quantity:	50 µg
Target:	SLC1A5
Binding Specificity:	Internal Region
Reactivity:	Human, Monkey
Host:	Rabbit
Clonality:	Polyclonal
Application:	Immunohistochemistry (IHC), Immunohistochemistry (Paraffin-embedded Sections) (IHC (p))

Product Details

Brand:	IHC-plus™
Immunogen:	Synthetic 17 amino acid peptide from internal region of human SLC1A5. Percent identity with other species by BLAST analysis: Human, Gorilla, Monkey (100%), Gibbon (94%). Type of Immunogen: Synthetic peptide
Specificity:	Human SLC1A5. BLAST analysis of the peptide immunogen showed no homology with other human proteins.
Predicted Reactivity:	Percent identity with other species by BLAST analysis: Human, Gorilla, Monkey (100%) Gibbon (94%).
Purification:	Immunoaffinity purified

Target Details

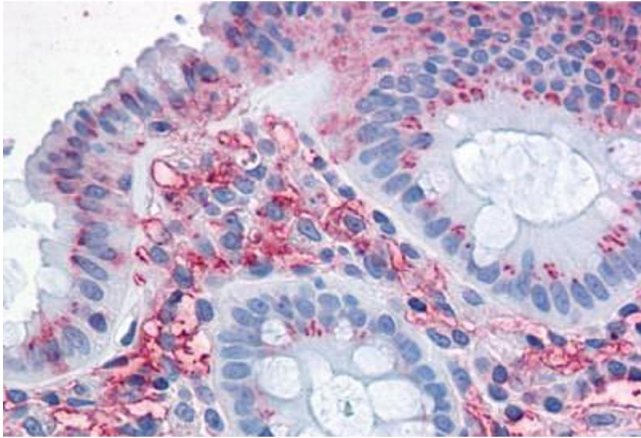
Target:	SLC1A5
Alternative Name:	SLC1A5 / ASCT2 (SLC1A5 Products)
Background:	Name/Gene ID: SLC1A5 Subfamily: Sodium:dicarboxylate symporter Family: Transporter Synonyms: SLC1A5, ATB0, ASCT2, ATB0, Baboon M7 virus receptor, AAAT, M7VS1, M7V1, R16, RDRC, RD114 virus receptor, RDR, ATB(0)
Gene ID:	6510
Pathways:	Dicarboxylic Acid Transport , Warburg Effect

Application Details

Application Notes:	Approved: IHC, IHC-P (15 - 20 µg/mL)
Comment:	Target Species of Antibody: Human
Restrictions:	For Research Use only

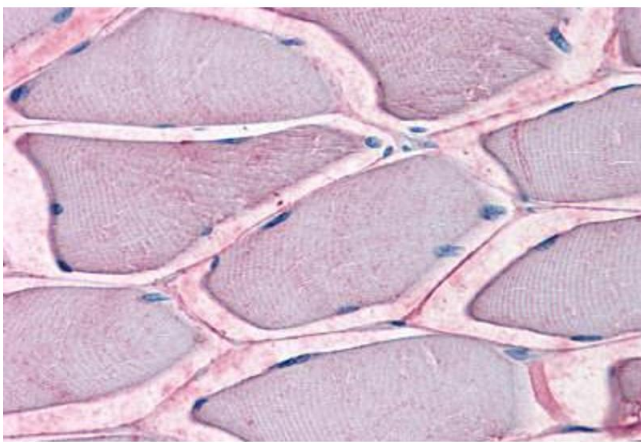
Handling

Format:	Liquid
Concentration:	Lot specific
Buffer:	PBS, less than 0.1 % sodium azide.
Preservative:	Sodium azide
Precaution of Use:	This product contains Sodium azide: a POISONOUS AND HAZARDOUS SUBSTANCE which should be handled by trained staff only.
Handling Advice:	avoid freeze thaw cycles.
Storage:	4 °C,-20 °C
Storage Comment:	Aliquot and store undiluted at -20°C or below for up to 1 year. Can be stored undiluted at 4°C for up to 1 month. Avoid freeze-thaw cycles.
Expiry Date:	12 months



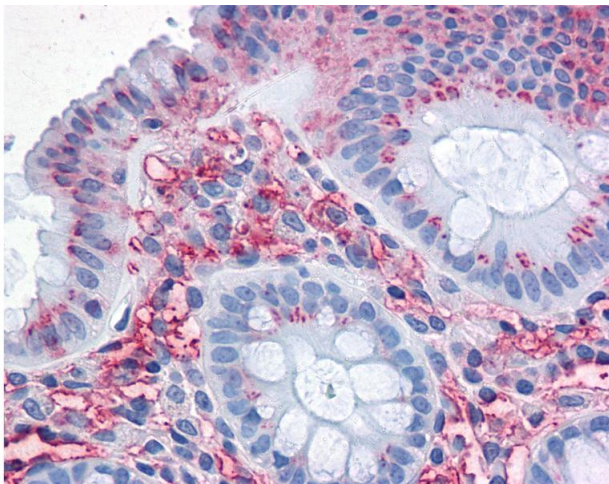
Immunohistochemistry (Formalin-fixed Paraffin-embedded Sections)

Image 1. Human Colon: Formalin-Fixed, Paraffin-Embedded (FFPE)



Immunohistochemistry (Formalin-fixed Paraffin-embedded Sections)

Image 2. Human Skeletal Muscle: Formalin-Fixed, Paraffin-Embedded (FFPE)



Immunohistochemistry

Image 3. Anti-SLC1A5 antibody IHC of human colon. Immunohistochemistry of formalin-fixed, paraffin-embedded tissue after heat-induced antigen retrieval.