

Datasheet for ABIN768708
anti-Keratin 8/18/19 antibody

2 Images

[Go to Product page](#)

Overview

Quantity:	50 µg
Target:	Keratin 8/18/19 (KRT8/18/19)
Reactivity:	Human, Pig
Host:	Mouse
Clonality:	Monoclonal
Application:	Western Blotting (WB), Immunohistochemistry (IHC), Immunohistochemistry (Frozen Sections) (IHC (fro)), Immunohistochemistry (Paraffin-embedded Sections) (IHC (p))

Product Details

Brand:	IHC-plus™
Immunogen:	Cytokeratins purified from pig kidney epithelial cells
Clone:	2A4
Isotype:	IgG1
Specificity:	The antibody recognizes cytokeratin nos. 8, 18 and 19 typical for simple epithelial cells. Monoclonal antibody to cytokeratin is derived from the hybridoma produced by fusion between myeloma cells and Balb/c spleen cells. Cytokeratins isolated from cultured pig kidney epithelial cells were used as immunogen.
Purification:	Fast Protein Liquid Chromatography (FPLC)

Target Details

Target:	Keratin 8/18/19 (KRT8/18/19)
---------	------------------------------

Target Details

Alternative Name: Cytokeratin 8+18+19 ([KRT8/18/19 Products](#))

Background: This antibody detects: Cytokeratin 8+18+19

Application Details

Application Notes: Approved: IHC, IHC-Fr (1:200), IHC-P (1:100), WB (1:1000 - 1:4000)

Usage: Immunohistochemical stainings (frozen sections) and western blotting. Working dilution in western blotting is at least 1:1000. This antibody has been tested with human samples, although raised against porcine, it has not been tested with porcine samples.

Comment: Target Species of Antibody: Human

Restrictions: For Research Use only

Handling

Format: Liquid

Concentration: Lot specific

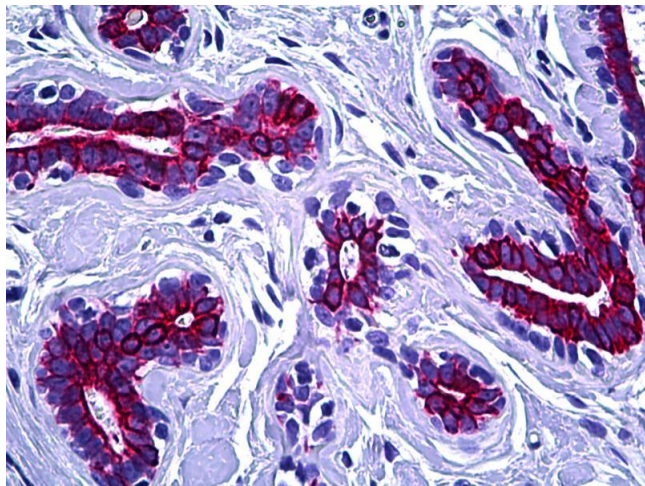
Buffer: PBS, 1.0 % BSA, 0.1 % sodium azide. Sourced in TCS.

Preservative: Sodium azide

Precaution of Use: This product contains Sodium azide: a POISONOUS AND HAZARDOUS SUBSTANCE which should be handled by trained staff only.

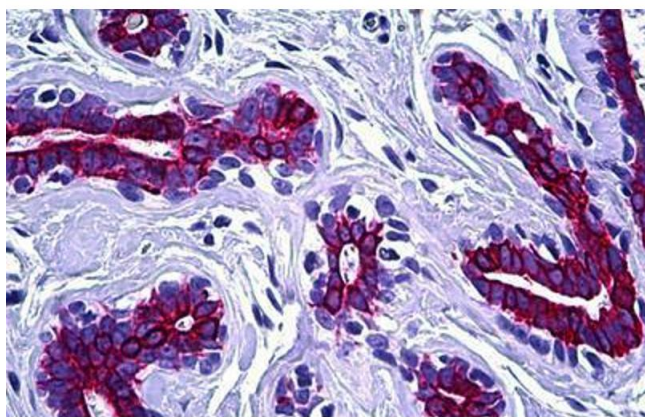
Storage: 4 °C

Storage Comment: Store at 4°C.



Immunohistochemistry

Image 1. Anti-Keratin 8/18/19 antibody IHC of human breast. Immunohistochemistry of formalin-fixed, paraffin-embedded tissue after heat-induced antigen retrieval. Antibody dilution 1:100.



Immunohistochemistry (Formalin-fixed Paraffin-embedded Sections)

Image 2. Human Breast: Formalin-Fixed, Paraffin-Embedded (FFPE)