

[Go to Product page](#)

## Datasheet for ABIN768736 anti-SOX6 antibody (C-Term)

### 2 Images

#### Overview

Quantity:	50 µg
Target:	SOX6
Binding Specificity:	C-Term
Reactivity:	Human, Mouse, Rat, Monkey, Cow, Guinea Pig, Horse, Pig, Rabbit, Zebrafish (Danio rerio), Bat
Host:	Rabbit
Clonality:	Polyclonal
Conjugate:	This SOX6 antibody is un-conjugated
Application:	Western Blotting (WB), Immunohistochemistry (IHC), Immunohistochemistry (Paraffin-embedded Sections) (IHC (p))

#### Product Details

Brand:	IHC-plus™
Immunogen:	Synthetic peptide from C-Terminus of human SOX6 (NP_059978). Percent identity by BLAST analysis: Human, Chimpanzee, Gorilla, Orangutan, Gibbon, Monkey, Galago, Marmoset, Mouse, Rat, Elephant, Panda, Bovine, Bat, Rabbit, Horse, Pig, Guinea pig (100%), Dog, Opossum, Turkey, Zebra finch, Chicken, Xenopus (92%), Lizard (85%).  Type of Immunogen: Synthetic peptide
Specificity:	Human SOX6
Predicted Reactivity:	Percent identity by BLAST analysis: Human, Mouse, Rat, Bovine, Rabbit, Horse, Pig (100%) Dog, Chicken (92%).

## Product Details

---

Purification: Immunoaffinity purified

## Target Details

---

Target: SOX6

Alternative Name: SOX6 ([SOX6 Products](#))

Background: Name/Gene ID: SOX6  
Family: Transcription factor

Synonyms: SOX6, HSSOX6, SOXD, SRY-box containing gene 6, Transcription factor SOX-6

Gene ID: 55553

NCBI Accession: [NP\\_059978](#)

UniProt: [P35712](#)

## Application Details

---

Application Notes: Approved: IHC, IHC-P (2.5 µg/mL), WB (0.2 - 1 µg/mL)

Usage: Western Blot: Suggested dilution at 1 µg/mL in 5 % skim milk / PBS buffer, and HRP conjugated anti-Rabbit IgG should be diluted in 1: 50,000 - 100,000 as secondary antibody.

Comment: Target Species of Antibody: Human

Restrictions: For Research Use only

## Handling

---

Format: Lyophilized

Reconstitution: Distilled water

Concentration: Lot specific

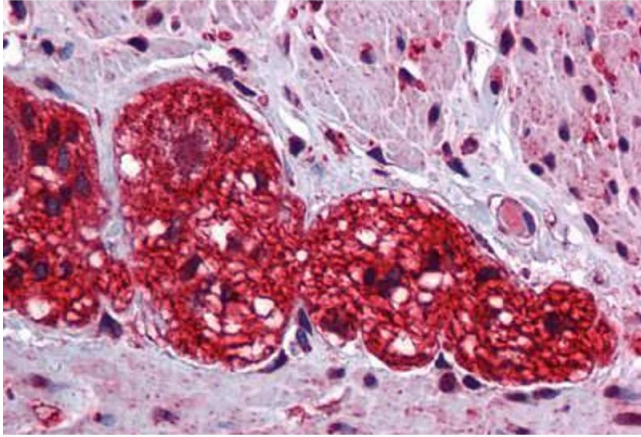
Buffer: Lyophilized from PBS with 2 % sucrose

Handling Advice: Avoid repeat freeze-thaw cycles.

Storage: 4 °C, -20 °C

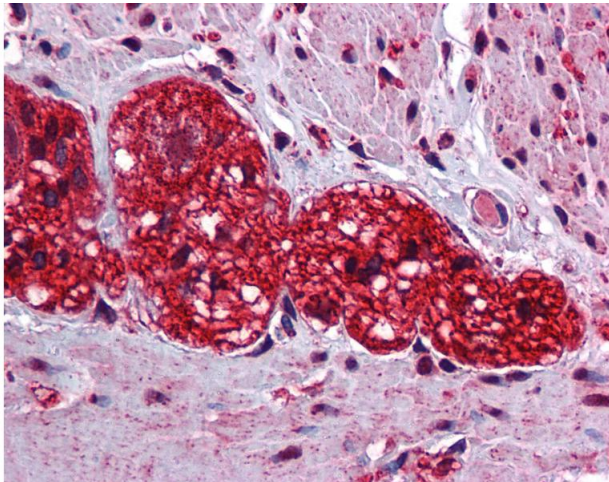
Storage Comment: Long term: -20°C, the use of 50% glycerol is recommended if storing aliquots in -20°C for long term use (up to 1 year)

Short term (less than 1 week): 4°C. Avoid freeze-thaw cycles.



#### Immunohistochemistry (Formalin-fixed Paraffin-embedded Sections)

**Image 1.** Human Colon, Myenteric Plexus: Formalin-Fixed, Paraffin-Embedded (FFPE)



#### Immunohistochemistry

**Image 2.** Anti-SOX6 antibody IHC of human colon, myenteric plexus. Immunohistochemistry of formalin-fixed, paraffin-embedded tissue after heat-induced antigen retrieval. Antibody concentration 2.5 ug/ml. This image was taken for the unconjugated form of this ...