



[Go to Product page](#)

Datasheet for ABIN768745  
**anti-ZFP36 antibody (AA 41-90)**

2 Images

Overview

|                      |  |
|----------------------|--|
| Quantity:            | 50 µg  |
| Target:              | ZFP36  |
| Binding Specificity: | AA 41-90   |
| Reactivity:          | Human  |
| Host:                | Rabbit   |
| Clonality:           | Polyclonal   |
| Conjugate:           | This ZFP36 antibody is un-conjugated   |
| Application:         | Western Blotting (WB), Immunohistochemistry (IHC), Immunohistochemistry (Paraffin-embedded Sections) (IHC (p)) |

Product Details

|                       |  |
|-----------------------|--|
| Brand:                | IHC-plus™  |
| Immunogen:            | Synthetic peptide located between aa41-90 of human ZFP36 (P26651, NP_003398). Percent identity by BLAST analysis: Human, Gorilla, Gibbon (100%), Marmoset (92%).<br><br>Type of Immunogen: Synthetic peptide |
| Specificity:          | Human ZFP36  |
| Predicted Reactivity: | Percent identity by BLAST analysis: Human (100%).  |
| Purification:         | Immunoaffinity purified  |

## Target Details

---

|                   |   |
|-------------------|---|
| Target:           | ZFP36   |
| Alternative Name: | ZFP36 / Tristetraprolin ( <a href="#">ZFP36 Products</a> )  |
| Background:       | Name/Gene ID: ZFP36<br><br>Synonyms: ZFP36, Protein TIS11A, Tristetraprolin, ZFP36 ring finger protein, TIS11, Zinc finger protein 36 homolog, TTP, NUP475, TIS11A, Tristetraproline, Zfp-36, GOS24, GOS24, RNF162A |
| Gene ID:          | 7538  |
| NCBI Accession:   | <a href="#">NP_003398</a>   |
| UniProt:          | <a href="#">P26651</a>  |

## Application Details

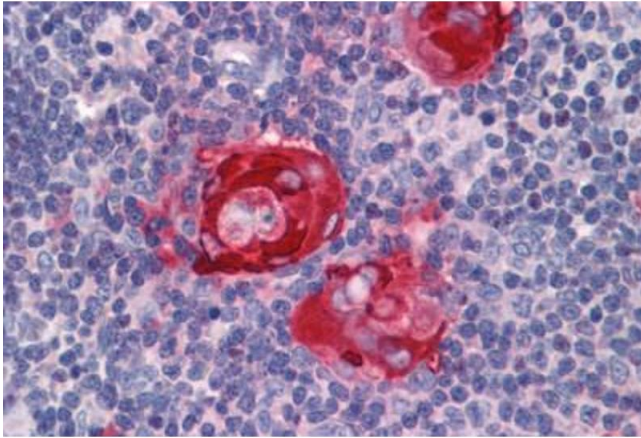
---

|                    |  |
|--------------------|--|
| Application Notes: | Approved: IHC, IHC-P (5 µg/mL), WB (0.2 - 1 µg/mL)<br><br>Usage: Western Blot: Suggested dilution at 1 µg/mL in 5 % skim milk / PBS buffer, and HRP conjugated anti-Rabbit IgG should be diluted in 1: 50,000 - 100,000 as secondary antibody. |
| Comment:           | Target Species of Antibody: Human  |
| Restrictions:      | For Research Use only  |

## Handling

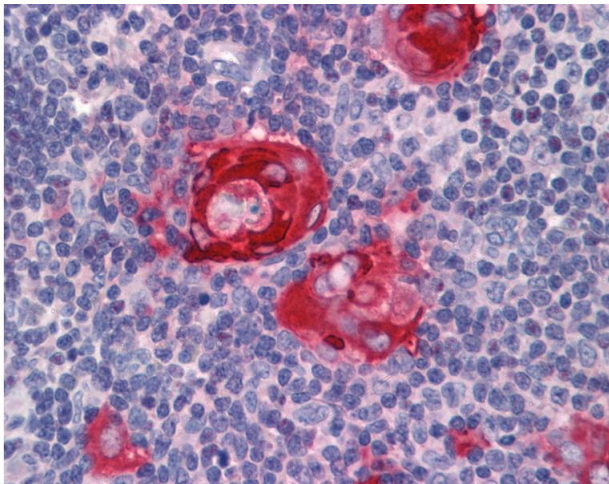
---

|                  |   |
|------------------|---|
| Format:          | Lyophilized   |
| Reconstitution:  | Distilled water   |
| Concentration:   | Lot specific  |
| Buffer:          | Lyophilized from PBS with 2 % sucrose   |
| Handling Advice: | Avoid repeat freeze-thaw cycles.  |
| Storage:         | 4 °C, -20 °C  |
| Storage Comment: | Long term: -20°C, the use of 50% glycerol is recommended if storing aliquots in -20°C for long term use (up to 1 year)<br><br>Short term (less than 1 week): 4°C. Avoid freeze-thaw cycles. |



### Immunohistochemistry (Formalin-fixed Paraffin-embedded Sections)

**Image 1.** Human Thymus: Formalin-Fixed, Paraffin-Embedded (FFPE)



### Immunohistochemistry

**Image 2.** Anti-ZFP36 antibody IHC of human thymus. Immunohistochemistry of formalin-fixed, paraffin-embedded tissue after heat-induced antigen retrieval. Antibody concentration 5 ug/ml. This image was taken for the unconjugated form of this product. Other for ...