



[Go to Product page](#)

Datasheet for ABIN768746

anti-YBX1 antibody (AA 143-192)

2 Images

Overview

Quantity:	50 µg
Target:	YBX1
Binding Specificity:	AA 143-192
Reactivity:	Human, Rat, Mouse, Cow, Sheep, Rabbit, Dog, Horse, Guinea Pig, Xenopus laevis, Monkey, Pig
Host:	Rabbit
Clonality:	Polyclonal
Application:	Western Blotting (WB), Immunohistochemistry (IHC), Immunohistochemistry (Paraffin-embedded Sections) (IHC (p))

Product Details

Brand:	IHC-plus™
Immunogen:	Synthetic peptide located between aa143-192 of human YBX1 (P67809, NP_004550). Percent identity by BLAST analysis: Human, Chimpanzee, Gorilla, Gibbon, Monkey, Galago, Marmoset, Mouse, Rat, Sheep, Dog, Bovine, Rabbit, Horse, Pig, Opossum, Guinea pig, Platypus, Xenopus (100%), Elephant, Turkey, Chicken (92%). Type of Immunogen: Synthetic peptide
Specificity:	Human YBX1 / YB1
Predicted Reactivity:	Percent identity by BLAST analysis: Human, Mouse, Rat, Sheep, Dog, Bovine, Pig (100%) Chicken (92%).
Purification:	Immunoaffinity purified

Target Details

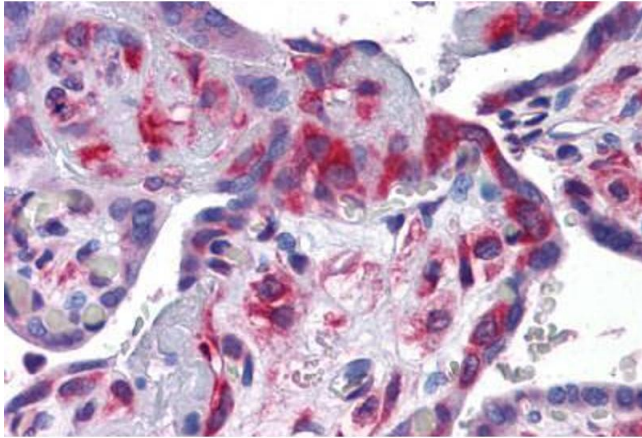
Target:	YBX1
Alternative Name:	YBX1 / YB1 (YBX1 Products)
Background:	Name/Gene ID: YBX1 Synonyms: YBX1, CBF-A, DBPB, CSDB, DNA-binding protein B, MDR-NF1, NSEP-1, NSEP1, Y box binding protein 1, Y-box transcription factor, Y-box-binding protein 1, YB-1, BP-8, CSDA2, EFI-A, Enhancer factor I subunit A, YB1
Gene ID:	4904
NCBI Accession:	NP_004550
UniProt:	P67809
Pathways:	Regulation of Muscle Cell Differentiation

Application Details

Application Notes:	Approved: IHC, IHC-P (5 µg/mL), WB (0.2 - 1 µg/mL) Usage: Western Blot: Suggested dilution at 1 µg/mL in 5 % skim milk / PBS buffer, and HRP conjugated anti-Rabbit IgG should be diluted in 1: 50,000 - 100,000 as secondary antibody.
Comment:	Target Species of Antibody: Human
Restrictions:	For Research Use only

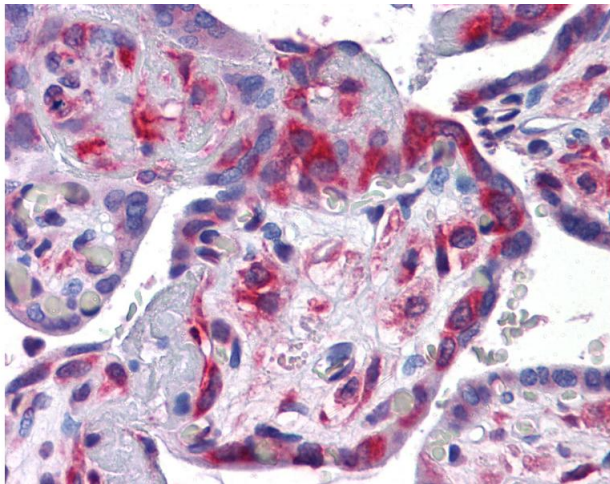
Handling

Format:	Lyophilized
Reconstitution:	Distilled water
Concentration:	Lot specific
Buffer:	Lyophilized from PBS with 2 % sucrose
Handling Advice:	Avoid repeat freeze-thaw cycles.
Storage:	4 °C, -20 °C
Storage Comment:	Long term: -20°C, the use of 50% glycerol is recommended if storing aliquots in -20°C for long term use (up to 1 year) Short term (less than 1 week): 4°C. Avoid freeze-thaw cycles.



Immunohistochemistry (Formalin-fixed Paraffin-embedded Sections)

Image 1. Human Placenta: Formalin-Fixed, Paraffin-Embedded (FFPE)



Immunohistochemistry

Image 2. Anti-YBX1 / YB1 antibody IHC of human placenta. Immunohistochemistry of formalin-fixed, paraffin-embedded tissue after heat-induced antigen retrieval. Antibody concentration 5 ug/ml. This image was taken for the unconjugated form of this product. Ot ...