



[Go to Product page](#)

Datasheet for ABIN768759
anti-DLX6 antibody (AA 36-85)

2 Images

Overview

Quantity:	50 µg
Target:	DLX6
Binding Specificity:	AA 36-85
Reactivity:	Human, Mouse, Zebrafish (Danio rerio), Rat, Dog, Rabbit, Cow, Guinea Pig, Horse, Bat, Chicken, Monkey, Pig, Xenopus laevis, Hamster
Host:	Rabbit
Clonality:	Polyclonal
Conjugate:	This DLX6 antibody is un-conjugated
Application:	Western Blotting (WB), Immunohistochemistry (IHC), Immunohistochemistry (Paraffin-embedded Sections) (IHC (p))

Product Details

Brand:	IHC-plus™
Immunogen:	Synthetic peptide located between aa36-85 of human DLX6. Percent identity by BLAST analysis: Human, Chimpanzee, Gorilla, Gibbon, Monkey, Galago, Marmoset, Mouse, Rat, Hamster, Elephant, Panda, Dog, Bovine, Bat, Rabbit, Horse, Pig, Opossum, Guinea pig, Zebra finch, Chicken, Platypus, Lizard, Xenopus, Seabass, Salmon, Stickleback (100%), Turkey, Drosophila, Water flea, Beetle (92%), Medaka (85%). Type of Immunogen: Synthetic peptide
Isotype:	IgG

Product Details

Specificity:	Human DLX6
Predicted Reactivity:	Percent identity by BLAST analysis: Human, Mouse, Dog, Bovine, Rabbit, Guinea pig, Chicken, Xenopus, Zebrafish (100%).
Purification:	Immunoaffinity purified

Target Details

Target:	DLX6
Alternative Name:	DLX6 (DLX6 Products)
Background:	Name/Gene ID: DLX6 Synonyms: DLX6, Distal-less homeo box 6, Distal-less homeobox 6, Homeobox protein DLX-6
Gene ID:	1750

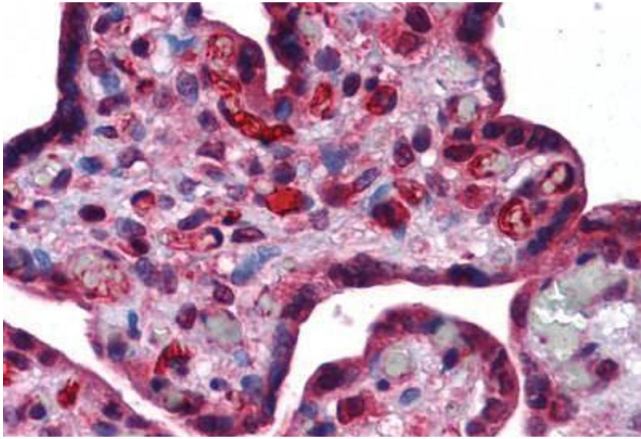
Application Details

Application Notes:	Approved: IHC, IHC-P (5 µg/mL), WB (0.2 - 1 µg/mL) Usage: Antibody has been tested for IHC-P with human tissue samples. It does not work for IHC-P with mouse tissue samples.
Comment:	Target Species of Antibody: Human
Restrictions:	For Research Use only

Handling

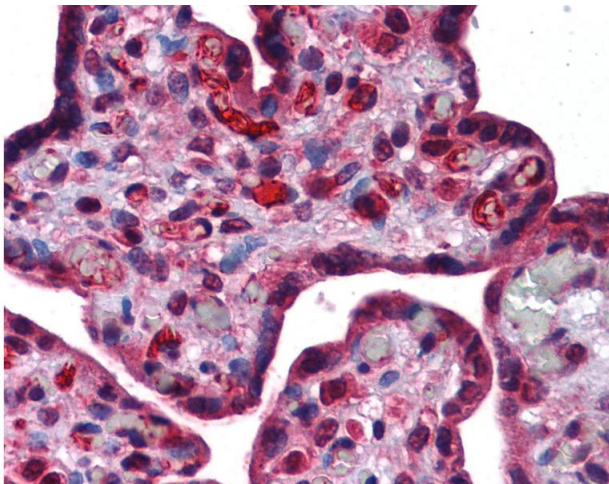
Format:	Lyophilized
Reconstitution:	Reconstitute with 50 µL sterile ddH ₂ O.
Concentration:	Lot specific
Buffer:	Lyophilized from PBS with 2 % sucrose
Handling Advice:	Avoid repeat freeze-thaw cycles.
Storage:	4 °C,-20 °C
Storage Comment:	Long term: -20°C, the use of 50% glycerol is recommended if storing aliquots in -20°C for long term use (up to 1 year)

Short term (less than 1 week): 4°C. Avoid freeze-thaw cycles.



Immunohistochemistry (Formalin-fixed Paraffin-embedded Sections)

Image 1. Human Placenta: Formalin-Fixed, Paraffin-Embedded (FFPE)



Immunohistochemistry

Image 2. Anti-DLX6 antibody IHC of human placenta. Immunohistochemistry of formalin-fixed, paraffin-embedded tissue after heat-induced antigen retrieval. Antibody concentration 5 ug/ml. This image was taken for the unconjugated form of this product. Other fo ...