

Datasheet for ABIN768768  
**anti-PTRF antibody (AA 177-226)**

## 2 Images

[Go to Product page](#)

## Overview

Quantity:	100 µL
Target:	PTRF
Binding Specificity:	AA 177-226
Reactivity:	Human, Mouse, Rabbit, Cow, Pig
Host:	Rabbit
Clonality:	Polyclonal
Conjugate:	This PTRF antibody is un-conjugated
Application:	Western Blotting (WB), Immunohistochemistry (IHC), Immunohistochemistry (Paraffin-embedded Sections) (IHC (p))

## Product Details

Brand:	IHC-plus™
Immunogen:	Synthetic peptide located between aa177-226 of mouse PTRF (O54724, NP_033012). Percent identity by BLAST analysis: Mouse (100%), Rat, Hamster, Elephant, Panda, Dog, Horse (92%), Opossum (85%), Human, Gorilla, Gibbon, Galago, Marmoset, Bovine, Rabbit, Pig (84%).  Type of Immunogen: Synthetic peptide
Isotype:	IgG
Specificity:	Mouse PTRF
Predicted Reactivity:	Percent identity by BLAST analysis: Mouse (100%) Rat (92%) Human, Bovine, Rabbit, Pig (84%).
Purification:	Protein A purified

## Target Details

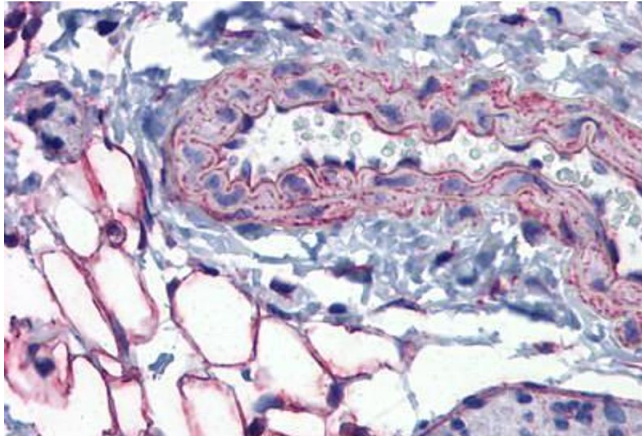
Target:	PTRF
Alternative Name:	PTRF / CAVIN ( <a href="#">PTRF Products</a> )
Background:	Name/Gene ID: PTRF  Synonyms: PTRF, Cavin-1, CAVIN1, CAVIN, CGL4, FKSG13, TTF-I interacting peptide 12
Gene ID:	284119
NCBI Accession:	<a href="#">NP_033012</a>
UniProt:	<a href="#">Q6NZI2</a>

## Application Details

Application Notes:	Approved: IHC, IHC-P (5 µg/mL), WB (0.62 µg/mL)
Comment:	Target Species of Antibody: Mouse
Restrictions:	For Research Use only

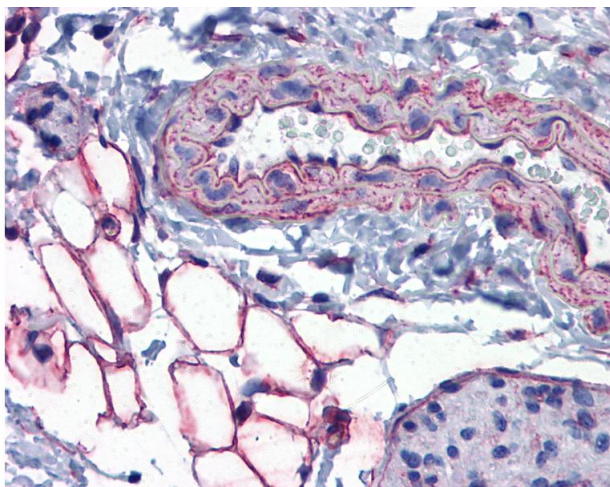
## Handling

Format:	Lyophilized
Reconstitution:	After adding water, will consist of PBS buffer with 2 % sucrose
Concentration:	Lot specific
Buffer:	Lyophilized from PBS with 2 % sucrose
Handling Advice:	Avoid repeat freeze-thaw cycles.
Storage:	4 °C, -20 °C
Storage Comment:	Long term: -20°C, the use of 50% glycerol is recommended if storing aliquots in -20°C for long term use (up to 1 year) Short term (less than 1 week): 4°C. Avoid freeze-thaw cycles.



#### Immunohistochemistry (Formalin-fixed Paraffin-embedded Sections)

**Image 1.** Mouse Vessel and Adipocytes: Formalin-Fixed, Paraffin-Embedded (FFPE)



#### Immunohistochemistry

**Image 2.** Anti-PTRF antibody IHC of mouse vessel and adipocytes. Immunohistochemistry of formalin-fixed, paraffin-embedded tissue after heat-induced antigen retrieval. Antibody concentration 5 ug/ml. This image was taken for the unconjugated form of this prod ...