

Datasheet for ABIN768772
anti-ELF5 antibody (AA 101-150)[Go to Product page](#)

2 Images

Overview

Quantity:	50 µg
Target:	ELF5
Binding Specificity:	AA 101-150
Reactivity:	Mouse, Rat, Pig, Bat
Host:	Rabbit
Clonality:	Polyclonal
Application:	Western Blotting (WB), Immunohistochemistry (IHC), Immunohistochemistry (Paraffin-embedded Sections) (IHC (p))

Product Details

Brand:	IHC-plus™
Immunogen:	Synthetic peptide located between aa101-150 of mouse Elf5 (Q8VDK3, NP_034255). Percent identity by BLAST analysis: Galago, Mouse, Rat, Elephant, Bat, Pig (100%), Human, Chimpanzee, Gorilla, Gibbon, Monkey, Marmoset, Rabbit, Horse (92%), Orangutan, Tamarin (90%), Dog, Bovine (85%), Guinea pig (84%). Type of Immunogen: Synthetic peptide
Specificity:	Mouse ELF5
Predicted Reactivity:	Percent identity by BLAST analysis: Mouse, Rat, Pig (100%) Human, Rabbit (92%) Dog, Bovine (85%) Guinea pig (84%).
Purification:	Immunoaffinity purified

Target Details

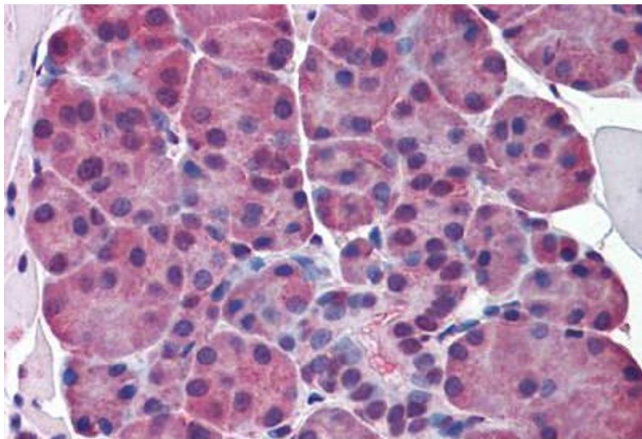
Target:	ELF5
Alternative Name:	ELF5 (ELF5 Products)
Background:	Name/Gene ID: ELF5 Synonyms: ELF5, ESE2, E74-like factor 5, ESE-2
Gene ID:	2001
NCBI Accession:	NP_034255
UniProt:	Q9UKW6

Application Details

Application Notes:	Approved: IHC, IHC-P (5 µg/mL), WB (0.2 - 1 µg/mL) Usage: Western Blot: Suggested dilution at 1 µg/mL in 5 % skim milk / PBS buffer, and HRP conjugated anti-Rabbit IgG should be diluted in 1: 50,000 - 100,000 as secondary antibody.
Comment:	Target Species of Antibody: Mouse
Restrictions:	For Research Use only

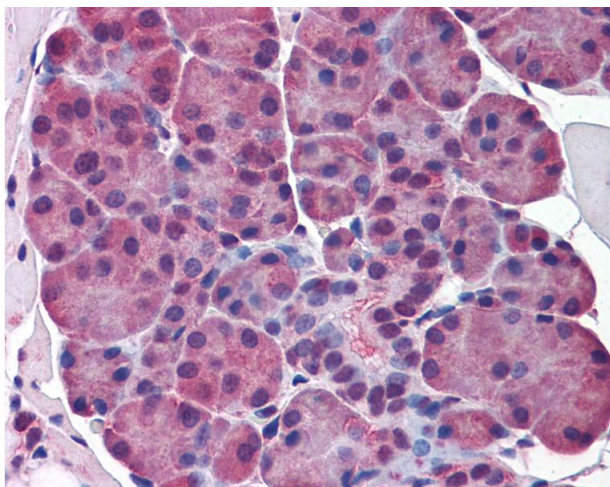
Handling

Format:	Lyophilized
Reconstitution:	Distilled water
Concentration:	Lot specific
Buffer:	Lyophilized from PBS with 2 % sucrose
Handling Advice:	Avoid repeat freeze-thaw cycles.
Storage:	4 °C, -20 °C
Storage Comment:	Long term: -20°C, the use of 50% glycerol is recommended if storing aliquots in -20°C for long term use (up to 1 year) Short term (less than 1 week): 4°C. Avoid freeze-thaw cycles.



Immunohistochemistry (Formalin-fixed Paraffin-embedded Sections)

Image 1. Mouse Salivary Glands: Formalin-Fixed, Paraffin-Embedded (FFPE)



Immunohistochemistry

Image 2. Anti-ELF5 antibody IHC of mouse salivary glands. Immunohistochemistry of formalin-fixed, paraffin-embedded tissue after heat-induced antigen retrieval. Antibody concentration 5 ug/ml. This image was taken for the unconjugated form of this product. O ...