

Datasheet for ABIN768817
anti-DIAPH2 antibody (AA 56-114)

3 Images

[Go to Product page](#)

Overview

Quantity:	50 µg
Target:	DIAPH2
Binding Specificity:	AA 56-114
Reactivity:	Human
Host:	Rabbit
Clonality:	Polyclonal
Application:	Western Blotting (WB), Immunohistochemistry (IHC), Immunohistochemistry (Paraffin-embedded Sections) (IHC (p))

Product Details

Brand:	IHC-plus™
Immunogen:	Immunogen was a synthetic peptide, which represented a portion of human diaphanous homolog 2 between amino acids 56 to 114 (LocusLink ID 1730). Type of Immunogen: Synthetic peptide
Specificity:	This antibody is specific to human Diaphanous 2. Species cross-reactivity: Can be used to detect Diaphanous 2 in human. Other species have not been tested. Reactivity with mouse Dia2 is unlikely owing to divergence of this homolog from the peptide used for antibody production.
Purification:	Immunoaffinity purified

Target Details

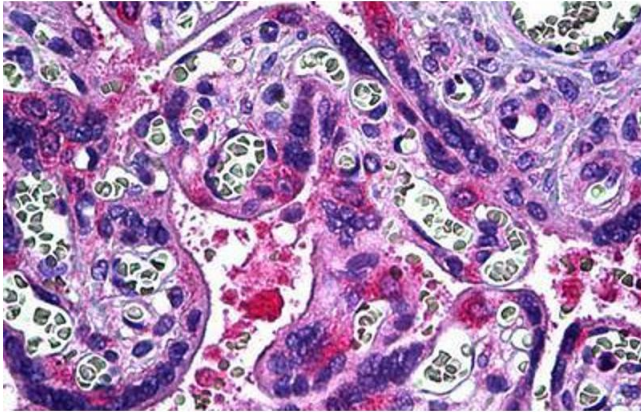
Target:	DIAPH2
Alternative Name:	DIA / DIAPH2 (DIAPH2 Products)
Background:	Name/Gene ID: DIAPH2 Synonyms: DIAPH2, DRF2, DIA, DIA2, POF, POF2, Protein diaphanous homolog 2, Diaphanous-related formin-2, Diaphorase-2
Gene ID:	1730
UniProt:	O60879

Application Details

Application Notes:	Approved: IHC, IHC-P (5 µg/mL), WB Usage: Suitable for use in Western Blot and IHC-P.
Comment:	Target Species of Antibody: Human
Restrictions:	For Research Use only

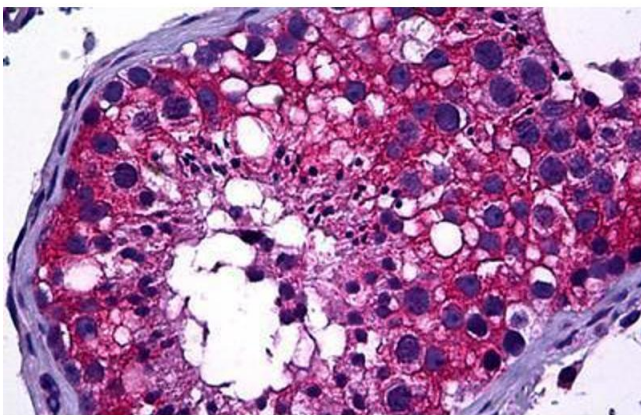
Handling

Format:	Liquid
Concentration:	Lot specific
Buffer:	Tris-citrate/phosphate, pH 7.5, 0.09 % sodium azide
Preservative:	Sodium azide
Precaution of Use:	This product contains Sodium azide: a POISONOUS AND HAZARDOUS SUBSTANCE which should be handled by trained staff only.
Handling Advice:	Aliquot to Avoid repeated freezing and thawing.
Storage:	4 °C, -20 °C
Storage Comment:	May be stored at 4°C for short-term only. Aliquot to avoid freeze-thaw cycles. Store at -20°C. Aliquots are stable for at least 1 year.



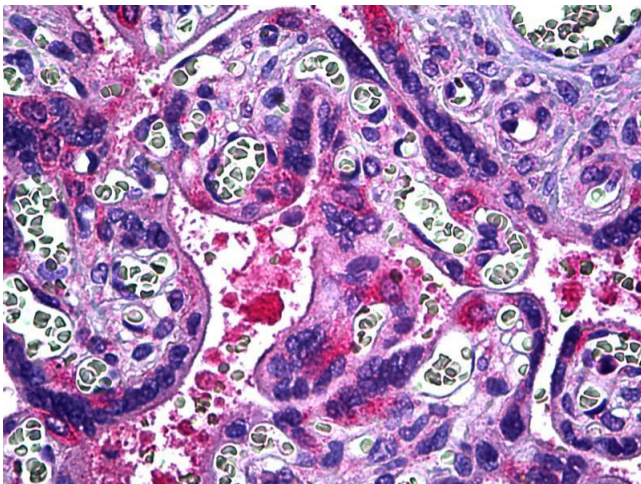
Immunohistochemistry (Formalin-fixed Paraffin-embedded Sections)

Image 1. Human Placenta: Formalin-Fixed, Paraffin-Embedded (FFPE)



Immunohistochemistry (Formalin-fixed Paraffin-embedded Sections)

Image 2. Human Testis: Formalin-Fixed, Paraffin-Embedded (FFPE)



Immunohistochemistry

Image 3. Anti-DIAPH2 antibody IHC of human placenta. Immunohistochemistry of formalin-fixed, paraffin-embedded tissue after heat-induced antigen retrieval. Antibody concentration 5 ug/ml.