



[Go to Product page](#)

Datasheet for ABIN768850
anti-SFRS6 antibody (AA 143-192)

2 Images

Overview

Quantity:	50 µg
Target:	SFRS6 (SRSF6)
Binding Specificity:	AA 143-192
Reactivity:	Human, Mouse, Rat, Cow, Horse, Pig, Rabbit, Zebrafish (Danio rerio), Bat, Hamster, Monkey
Host:	Rabbit
Clonality:	Polyclonal
Application:	Western Blotting (WB), Immunohistochemistry (IHC), Immunohistochemistry (Paraffin-embedded Sections) (IHC (p))

Product Details

Brand:	IHC-plus™
Immunogen:	Synthetic peptide located between aa143-192 of human SRSF6 (Q13247, NP_006266). Percent identity by BLAST analysis: Human, Chimpanzee, Gorilla, Gibbon, Monkey, Galago, Marmoset, Mouse, Rat, Hamster, Elephant, Panda, Bovine, Bat, Rabbit, Horse, Pig, Opossum (100%), Turkey, Zebra finch, Chicken, Platypus (85%), Stickleback, Zebrafish (84%). Type of Immunogen: Synthetic peptide
Isotype:	IgG
Specificity:	Human SRSF6 / SFRS6
Predicted Reactivity:	Percent identity by BLAST analysis:
Purification:	Immunoaffinity purified

Target Details

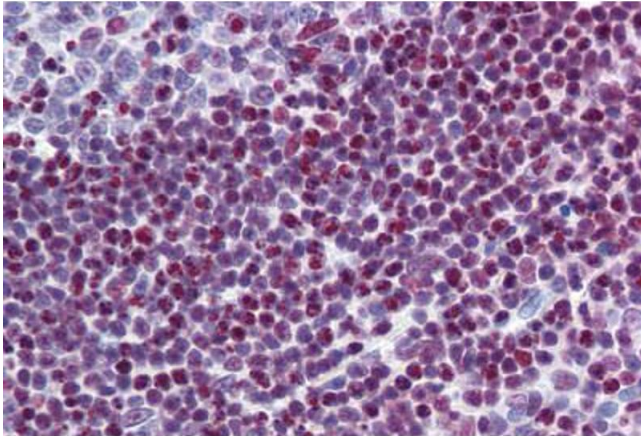
Target:	SFRS6 (SRSF6)
Alternative Name:	SRSF6 / SRP55 (SRSF6 Products)
Background:	Name/Gene ID: SRSF6 Synonyms: SRSF6, B52, Pre-mRNA-splicing factor SRP55, SFRS6, SR splicing factor 6, SRP55
Gene ID:	6431
NCBI Accession:	NP_006266
UniProt:	Q13247
Pathways:	Ribonucleoprotein Complex Subunit Organization

Application Details

Application Notes:	Approved: IHC, IHC-P (5 µg/mL), WB Usage: ELISA titer using peptide based assay: 1:62500. Western Blot: Suggested dilution at 0.5 µg/mL in 5 % skim milk / PBS buffer, and HRP conjugated anti-Rabbit IgG should be diluted in 1:50000 - 100000 as second antibody.
Comment:	Target Species of Antibody: Human
Restrictions:	For Research Use only

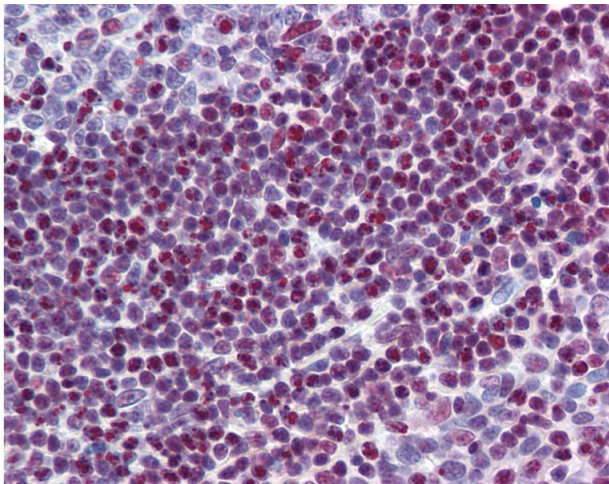
Handling

Format:	Lyophilized
Reconstitution:	Distilled water
Concentration:	Lot specific
Buffer:	Lyophilized from PBS with 2 % sucrose
Handling Advice:	Avoid repeat freeze-thaw cycles.
Storage:	4 °C,-20 °C
Storage Comment:	Long term: -20°C, the use of 50% glycerol is recommended if storing aliquots in -20°C for long term use (up to 1 year) Short term (less than 1 week): 4°C. Avoid freeze-thaw cycles.



Immunohistochemistry (Formalin-fixed Paraffin-embedded Sections)

Image 1. Human Tonsil: Formalin-Fixed, Paraffin-Embedded (FFPE)



Immunohistochemistry

Image 2. Anti-SRSF6 / SFRS6 antibody IHC of human tonsil. Immunohistochemistry of formalin-fixed, paraffin-embedded tissue after heat-induced antigen retrieval. Antibody concentration 5 ug/ml. This image was taken for the unconjugated form of this product. O ...