



[Go to Product page](#)

Datasheet for ABIN768865
anti-FOLR1 antibody (AA 179-228)

2 Images

Overview

Quantity:	50 µg
Target:	FOLR1
Binding Specificity:	AA 179-228
Reactivity:	Human, Rat, Mouse, Horse, Rabbit, Dog, Bat, Hamster
Host:	Rabbit
Clonality:	Polyclonal
Conjugate:	This FOLR1 antibody is un-conjugated
Application:	Western Blotting (WB), Immunohistochemistry (IHC), Immunohistochemistry (Paraffin-embedded Sections) (IHC (p))

Product Details

Brand:	IHC-plus™
Immunogen:	Synthetic peptide located between aa179-228 of human FOLR1 (P15328, NP_000793). Percent identity by BLAST analysis: Human, Gorilla, Monkey, Galago, Mouse, Rat, Hamster, Dog, Bat, Rabbit, Horse (100%), Gibbon, Marmoset, Elephant, Bovine, Pig, Opossum, Guinea pig (92%), Zebra finch (85%), Chicken (84%). Type of Immunogen: Synthetic peptide
Isotype:	IgG
Specificity:	Human FOLR1
Predicted Reactivity:	Percent identity by BLAST analysis: Human, Mouse, Rat, Dog (100%) Bovine, Pig (92%) Chicken

Product Details

(84%).

Purification: Immunoaffinity purified

Target Details

Target: FOLR1

Alternative Name: FOLR1 / Folate Receptor Alpha ([FOLR1 Products](#))

Background: Name/Gene ID: FOLR1

Synonyms: FOLR1, Adult folate-binding protein, FBP, Folate receptor alpha, KB cells FBP, Folate binding protein, Folate receptor 1, Folate receptor 1 (adult), Folate receptor, adult, FOLR, FR-alpha

Gene ID: 2348

NCBI Accession: [NP_000793](#)

UniProt: [P15328](#)

Pathways: [Dicarboxylic Acid Transport](#)

Application Details

Application Notes: Approved: IHC, IHC-P (5 µg/mL), WB (0.2 - 1 µg/mL)

Usage: Western Blot: Suggested dilution at 1 µg/mL in 5 % skim milk / PBS buffer, and HRP conjugated anti-Rabbit IgG should be diluted in 1: 50,000 - 100,000 as second antibody. ELISA titer in peptide based assay: 1:62500.

Comment: Target Species of Antibody: Human

Restrictions: For Research Use only

Handling

Format: Lyophilized

Reconstitution: Distilled water

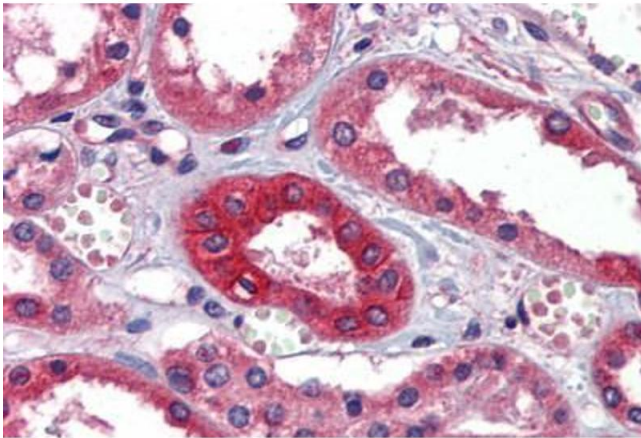
Concentration: Lot specific

Buffer: Lyophilized from PBS with 2 % sucrose

Handling

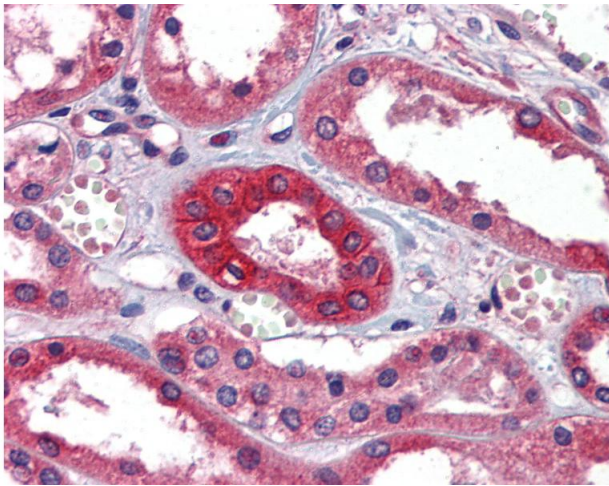
Handling Advice:	Avoid repeat freeze-thaw cycles.
Storage:	4 °C,-20 °C
Storage Comment:	Long term: -20°C, the use of 50% glycerol is recommended if storing aliquots in -20°C for long term use (up to 1 year) Short term (less than 1 week): 4°C. Avoid freeze-thaw cycles.

Images



Immunohistochemistry (Formalin-fixed Paraffin-embedded Sections)

Image 1. Human Kidney: Formalin-Fixed, Paraffin-Embedded (FFPE)



Immunohistochemistry

Image 2. Anti-Folate Binding Protein antibody IHC of human kidney. Immunohistochemistry of formalin-fixed, paraffin-embedded tissue after heat-induced antigen retrieval. Antibody concentration 5 ug/ml. This image was taken for the unconjugated form of this p ...