

Datasheet for ABIN768867 anti-ABCB4 antibody (AA 252-301)



[Go to Product page](#)

2 Images

Overview

Quantity:	50 µg
Target:	ABCB4
Binding Specificity:	AA 252-301
Reactivity:	Human, Mouse, Rat, Cow, Dog, Rabbit, Hamster, Monkey
Host:	Rabbit
Clonality:	Polyclonal
Conjugate:	This ABCB4 antibody is un-conjugated
Application:	Western Blotting (WB), Immunohistochemistry (IHC), Immunohistochemistry (Paraffin-embedded Sections) (IHC (p))

Product Details

Brand:	IHC-plus™
Immunogen:	Synthetic peptide located between aa252-301 of human ABCB4 (A4D1D4, NP_000434). Percent identity by BLAST analysis: Human, Chimpanzee, Gibbon, Monkey, Marmoset, Mouse, Rat, Hamster, Elephant, Rabbit (100%), Galago, Panda, Opossum (92%), Bovine (85%). Type of Immunogen: Synthetic peptide
Specificity:	Human ABCB4
Predicted Reactivity:	Percent identity by BLAST analysis: Human, Rat, Rabbit (100%) Bovine (85%).
Purification:	Immunoaffinity purified

Target Details

Target:	ABCB4
Alternative Name:	ABCB4 / MDR3 (ABCB4 Products)
Background:	Name/Gene ID: ABCB4 Subfamily: ATP-binding cassette - ABCB/MDR Family: Transporter Synonyms: ABCB4, ABC21, ICP3, GBD1, MDR3, MDR2, Multidrug resistance protein 3, Multiple drug resistance 3, P-glycoprotein 3, Pgy2, PGY3, PFIC-3, MDR2/3
Gene ID:	5244
NCBI Accession:	NP_000434
UniProt:	P21439
Pathways:	Regulation of Lipid Metabolism by PPARalpha

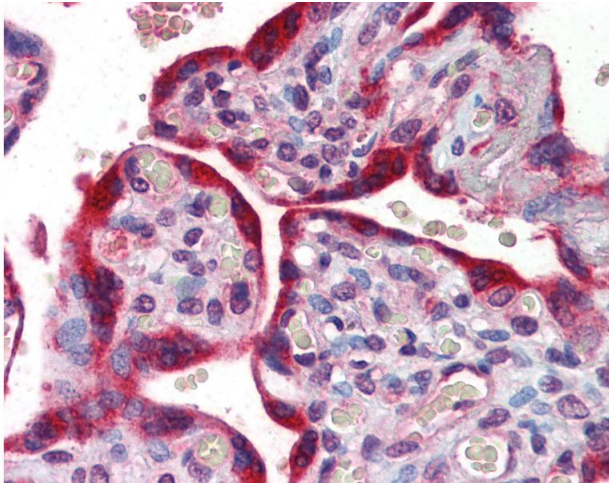
Application Details

Application Notes:	Approved: IHC, IHC-P (5 µg/mL), WB (0.2 - 1 µg/mL) Usage: Western Blot: Suggested dilution at 1 µg/mL in 5 % skim milk / PBS buffer, and HRP conjugated anti-Rabbit IgG should be diluted in 1: 50,000 - 100,000 as secondary antibody.
Comment:	Target Species of Antibody: Human
Restrictions:	For Research Use only

Handling

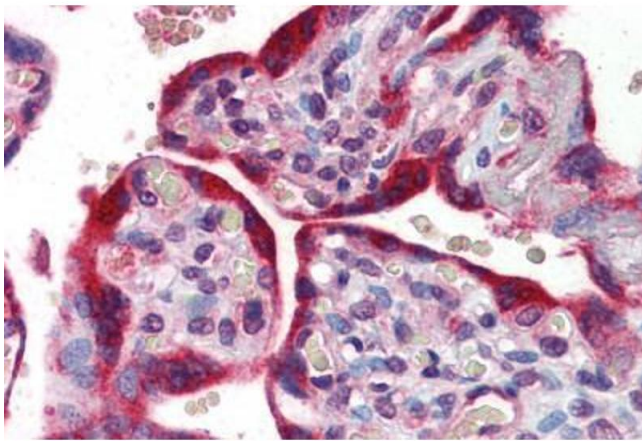
Format:	Lyophilized
Reconstitution:	Distilled water
Concentration:	Lot specific
Buffer:	Lyophilized from PBS with 2 % sucrose
Handling Advice:	Avoid repeat freeze-thaw cycles.
Storage:	4 °C, -20 °C
Storage Comment:	Long term: -20°C, the use of 50% glycerol is recommended if storing aliquots in -20°C for long term use (up to 1 year)

Short term (less than 1 week): 4°C. Avoid freeze-thaw cycles.



Immunohistochemistry

Image 1. Anti-ABCB4 antibody IHC of human placenta. Immunohistochemistry of formalin-fixed, paraffin-embedded tissue after heat-induced antigen retrieval. Antibody concentration 5 ug/ml. This image was taken for the unconjugated form of this product. Other f ...



Immunohistochemistry (Formalin-fixed Paraffin-embedded Sections)

Image 2. Human Placenta: Formalin-Fixed, Paraffin-Embedded (FFPE)