

Datasheet for ABIN768875  
**anti-Occludin antibody (AA 35-84)**

## 2 Images

[Go to Product page](#)

## Overview

Quantity:	50 µg
Target:	Occludin (OCLN)
Binding Specificity:	AA 35-84
Reactivity:	Human, Mouse, Rat, Pig, Cow, Dog, Guinea Pig, Horse, Rabbit, Zebrafish (Danio rerio), Hamster, Monkey
Host:	Rabbit
Clonality:	Polyclonal
Conjugate:	This Occludin antibody is un-conjugated
Application:	Western Blotting (WB), Immunohistochemistry (IHC), Immunohistochemistry (Paraffin-embedded Sections) (IHC (p))

## Product Details

Brand:	IHC-plus™
Immunogen:	Synthetic peptide located between aa35-84 of human OCLN (Q16625, NP_002529). Percent identity by BLAST analysis: Human, Chimpanzee, Gorilla, Orangutan, Gibbon, Monkey, Galago, Marmoset, Mouse, Rat, Hamster, Panda, Dog, Bovine, Rabbit, Horse, Pig, Guinea pig (100%), Opossum, Platypus, Xenopus (92%), Bat (85%), Trout, Zebrafish (81%).  Type of Immunogen: Synthetic peptide
Specificity:	Human OCLN / Occludin
Predicted Reactivity:	Percent identity by BLAST analysis: Human, Mouse, Rat, Dog, Bovine, Rabbit, Horse, Pig, Guinea

## Product Details

pig (100%) Xenopus (92%) Zebrafish (81%).

Purification: Immunoaffinity purified

## Target Details

Target: Occludin (OCLN)

Alternative Name: OCLN / Occludin ([OCLN Products](#))

Background: Name/Gene ID: OCLN

Synonyms: OCLN, Occludin, BLCPMG

Gene ID: 100506658

NCBI Accession: [NP\\_002529](#)

UniProt: [Q16625](#)

Pathways: [Cell-Cell Junction Organization](#), [Hepatitis C](#)

## Application Details

Application Notes: Approved: IHC, IHC-P (5 µg/mL), WB (0.2 - 1 µg/mL)

Usage: Western Blot: Suggested dilution at 1 µg/mL in 5 % skim milk / PBS buffer, and HRP conjugated anti-Rabbit IgG should be diluted in 1: 50,000 - 100,000 as secondary antibody.

Comment: Target Species of Antibody: Human

Restrictions: For Research Use only

## Handling

Format: Lyophilized

Reconstitution: Distilled water

Concentration: Lot specific

Buffer: Lyophilized from PBS with 2 % sucrose

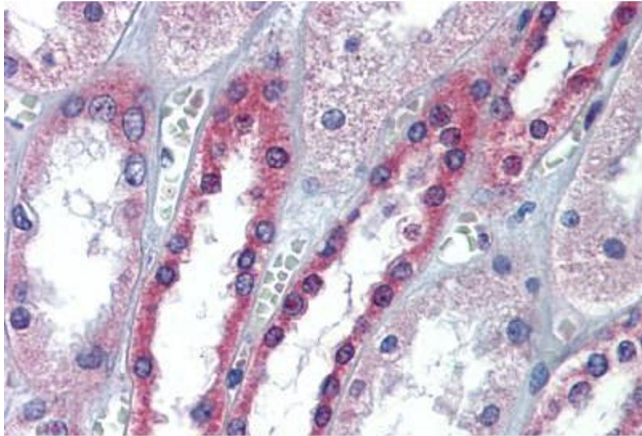
Handling Advice: Avoid repeat freeze-thaw cycles.

Storage: 4 °C, -20 °C

## Handling

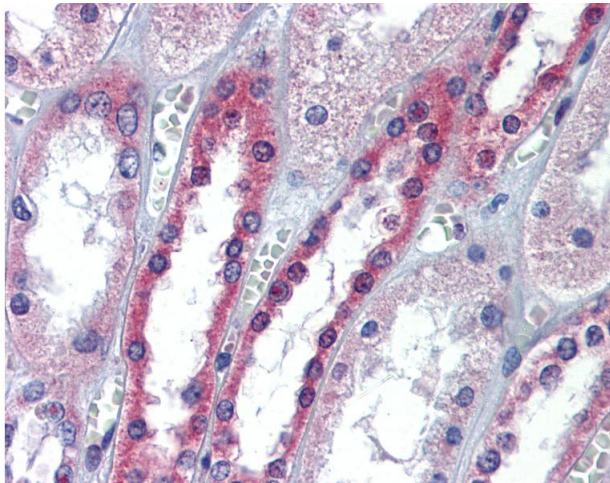
Storage Comment: Long term: -20°C, the use of 50% glycerol is recommended if storing aliquots in -20°C for long term use (up to 1 year)  
Short term (less than 1 week): 4°C. Avoid freeze-thaw cycles.

## Images



### Immunohistochemistry (Formalin-fixed Paraffin-embedded Sections)

**Image 1.** Human Kidney: Formalin-Fixed, Paraffin-Embedded (FFPE)



### Immunohistochemistry

**Image 2.** Anti-Occludin antibody IHC of human kidney. Immunohistochemistry of formalin-fixed, paraffin-embedded tissue after heat-induced antigen retrieval. Antibody concentration 5 ug/ml. This image was taken for the unconjugated form of this product. Other ...