



[Go to Product page](#)

Datasheet for ABIN768892

## anti-Insulin antibody

### 2 Images

#### Overview

Quantity:	0.05 mg
Target:	Insulin (INS)
Reactivity:	Human, Pig, Mouse, Cow, Rat
Host:	Mouse
Clonality:	Monoclonal
Application:	ELISA, Immunohistochemistry (IHC), Immunohistochemistry (Paraffin-embedded Sections) (IHC (p)), Immunohistochemistry (Frozen Sections) (IHC (fro))

#### Product Details

Brand:	IHC-plus™
Immunogen:	Purified Insulin protein. Type of Immunogen: Purified protein
Clone:	D3E7
Isotype:	IgG1
Specificity:	Human, bovine and porcine insulin and proinsulin
Purification:	Protein A purified

#### Target Details

Target:	Insulin (INS)
Alternative Name:	Insulin ( <a href="#">INS Products</a> )

## Target Details

---

Background:	Name/Gene ID: INS Family: Hormone  Synonyms: INS, IRDN, IDDM2, Preproinsulin, ILPR, Insulin, MODY10, Proinsulin
Gene ID:	3630
UniProt:	<a href="#">P01308</a>
Pathways:	<a href="#">NF-kappaB Signaling</a> , <a href="#">RTK Signaling</a> , <a href="#">Positive Regulation of Peptide Hormone Secretion</a> , <a href="#">Peptide Hormone Metabolism</a> , <a href="#">Hormone Activity</a> , <a href="#">Carbohydrate Homeostasis</a> , <a href="#">ER-Nucleus Signaling</a> , <a href="#">Regulation of Carbohydrate Metabolic Process</a> , <a href="#">Feeding Behaviour</a> , <a href="#">Autophagy</a> , <a href="#">Negative Regulation of intrinsic apoptotic Signaling</a> , <a href="#">Brown Fat Cell Differentiation</a> , <a href="#">Positive Regulation of fat Cell Differentiation</a>

## Application Details

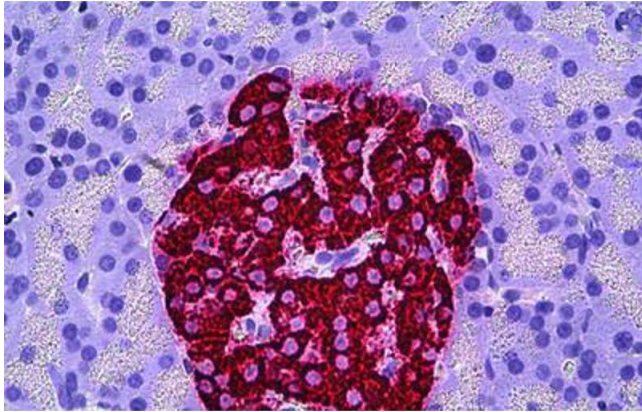
---

Application Notes:	Approved: ELISA, IHC, IHC-Fr, IHC-P (10 µg/mL)
Comment:	Target Species of Antibody: Rat
Restrictions:	For Research Use only

## Handling

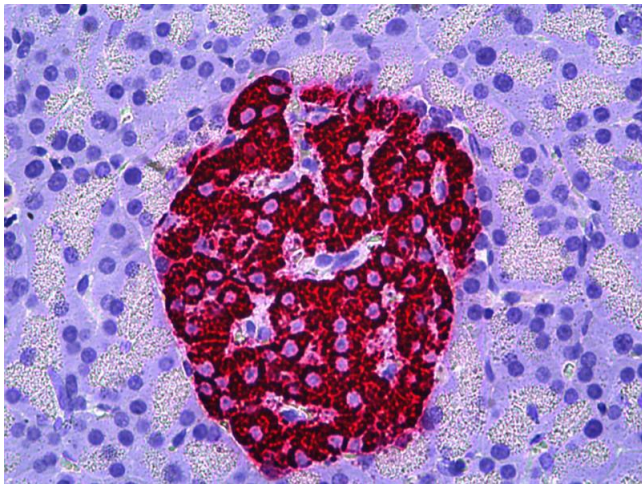
---

Format:	Liquid
Concentration:	Lot specific
Buffer:	PBS, pH 7.4, 0.1 % sodium azide. Sourced in Ascites.
Preservative:	Sodium azide
Precaution of Use:	This product contains Sodium azide: a POISONOUS AND HAZARDOUS SUBSTANCE which should be handled by trained staff only.
Handling Advice:	avoid freezing
Storage:	4 °C
Storage Comment:	4°C, avoid freezing.



### Immunohistochemistry (Formalin-fixed Paraffin-embedded Sections)

**Image 1.** Human Pancreas, Islets of Langerhans: Formalin-Fixed, Paraffin-Embedded (FFPE)



### Immunohistochemistry

**Image 2.** Anti-Insulin antibody IHC of human pancreas, islets of Langerhans. Immunohistochemistry of formalin-fixed, paraffin-embedded tissue after heat-induced antigen retrieval. Antibody concentration 10 ug/ml.