

Datasheet for ABIN768895
anti-Complement C3c antibody

3 Images

[Go to Product page](#)

Overview

Quantity:	50 µL
Target:	Complement C3c (C3C)
Reactivity:	Human
Host:	Sheep
Clonality:	Polyclonal
Application:	ELISA, Immunohistochemistry (IHC), Immunohistochemistry (Frozen Sections) (IHC (fro)), Immunohistochemistry (Paraffin-embedded Sections) (IHC (p))

Product Details

Brand:	IHC-plus™
Immunogen:	Native human C3 / Complement C3.
Isotype:	IgG
Specificity:	Detects human complement 3c, a polypeptide fragment which is present in C3. C3 plays a central role in the activation of the complement system. Processing of C3 by C3 convertase is the central reaction in both classical and alternative complement pathways, resulting in C3a and C3b. C3b can bind covalently, via its reactive thioester, to cell surface carbohydrates or immune aggregates, and help to initiate the complement cascade, potentially resulting in cellular apoptosis. C3a anaphylatoxin is a mediator of local inflammatory process. It induces the contraction of smooth muscle, increases vascular permeability and causes histamine release from mast cells and basophilic leukocytes. C3b is rapidly split in two positions by factor I and a cofactor to form iC3b (inactivated C3b) and C3f which is released. Then iC3b is slowly cleaved (possibly by factor I) to form C3c and C3dg. Defects in C3 can result in susceptibility to

Product Details

pyogenic infection. Shows minimal reactivity with related serum proteins.

Purification: Protein G purified

Target Details

Target: Complement C3c (C3C)

Alternative Name: Complement C3/C3c ([C3C Products](#))

UniProt: [P01024](#)

Application Details

Application Notes: Approved: ELISA (1:400), IHC, IHC-Fr (1:50), IHC-P (5 µg/mL)

Comment: Target Species of Antibody: Human

Restrictions: For Research Use only

Handling

Format: Liquid

Concentration: Lot specific

Buffer: PBS, 0.09 % sodium azide

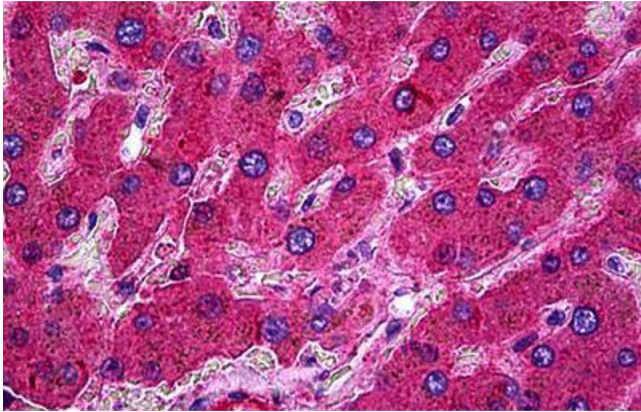
Preservative: Sodium azide

Precaution of Use: This product contains Sodium azide: a POISONOUS AND HAZARDOUS SUBSTANCE which should be handled by trained staff only.

Handling Advice: avoid freeze thaw cycles.

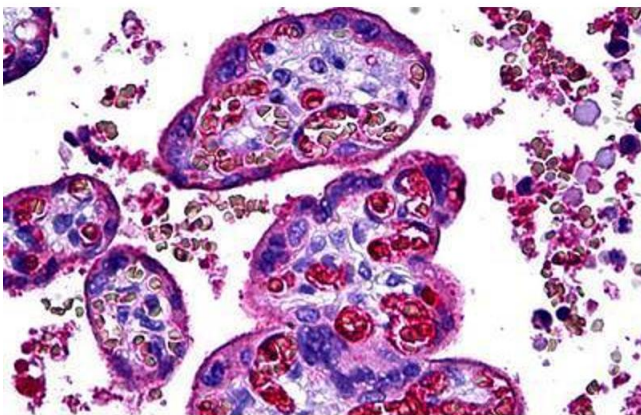
Storage: 4 °C,-20 °C

Storage Comment: Short term 4°C, long term aliquot and store at -20°C, avoid freeze-thaw cycles.



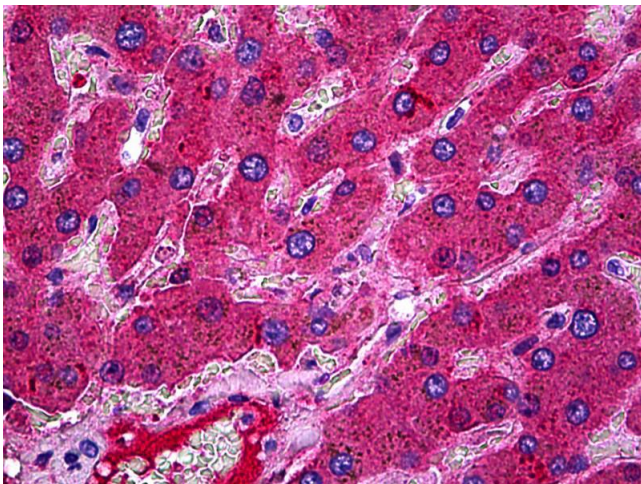
Immunohistochemistry (Formalin-fixed Paraffin-embedded Sections)

Image 1. Human Liver: Formalin-Fixed, Paraffin-Embedded (FFPE)



Immunohistochemistry (Formalin-fixed Paraffin-embedded Sections)

Image 2. Human Placenta: Formalin-Fixed, Paraffin-Embedded (FFPE)



Immunohistochemistry

Image 3. Anti-Complement C3 antibody IHC of human liver. Immunohistochemistry of formalin-fixed, paraffin-embedded tissue after heat-induced antigen retrieval. Antibody concentration 5 ug/ml. This image was taken for the unconjugated form of this product. Ot ...