



[Go to Product page](#)

Datasheet for ABIN768922

anti-LRP8 antibody (AA 395-444)

2 Images

Overview

Quantity:	50 µg
Target:	LRP8
Binding Specificity:	AA 395-444
Reactivity:	Human, Mouse, Rat, Dog, Guinea Pig, Rabbit, Pig, Bat
Host:	Rabbit
Clonality:	Polyclonal
Application:	Western Blotting (WB), Immunohistochemistry (IHC), Immunohistochemistry (Paraffin-embedded Sections) (IHC (p))

Product Details

Brand:	IHC-plus™
Immunogen:	Synthetic peptide located between aa395-444 of human LRP8 (B1AMT8, NP_059992). Percent identity by BLAST analysis: Human, Chimpanzee, Gorilla, Gibbon, Galago, Marmoset, Mouse, Rat, Panda, Dog, Bat, Rabbit, Pig, Guinea pig, Zebra finch (100%), Monkey, Elephant, Bovine, Horse, Opossum, Lizard (92%), Turkey, Chicken (91%), Medaka (85%), Xenopus, Zebrafish (84%). Type of Immunogen: Synthetic peptide
Isotype:	IgG
Specificity:	Human LRP8 / APOER2
Predicted Reactivity:	Percent identity by BLAST analysis: Human, Mouse, Rat, Dog, Rabbit, Pig, Guinea pig (100%)

Product Details

Bovine, Horse (92%) Chicken (91%).

Purification: Immunoaffinity purified

Target Details

Target: LRP8

Alternative Name: APOER2 / LRP8 ([LRP8 Products](#))

Background: Name/Gene ID: LRP8

Synonyms: LRP8, Apolipoprotein E receptor 2, APOER2, MCI1, HSZ75190, ApoE receptor 2, LRP-8

Gene ID: 7804

NCBI Accession: [NP_059992](#)

UniProt: [Q14114](#)

Application Details

Application Notes: Approved: IHC, IHC-P (5 µg/mL), WB (0.2 - 1 µg/mL)

Usage: Western Blot: Suggested dilution at 1 µg/mL in 5 % skim milk / PBS buffer, and HRP conjugated anti-Rabbit IgG should be diluted in 1: 50,000 - 100,000 as second antibody. ELISA titer in peptide based assay: 1:1562500.

Comment: Target Species of Antibody: Human

Restrictions: For Research Use only

Handling

Format: Lyophilized

Reconstitution: Distilled water

Concentration: Lot specific

Buffer: Lyophilized from PBS with 2 % sucrose

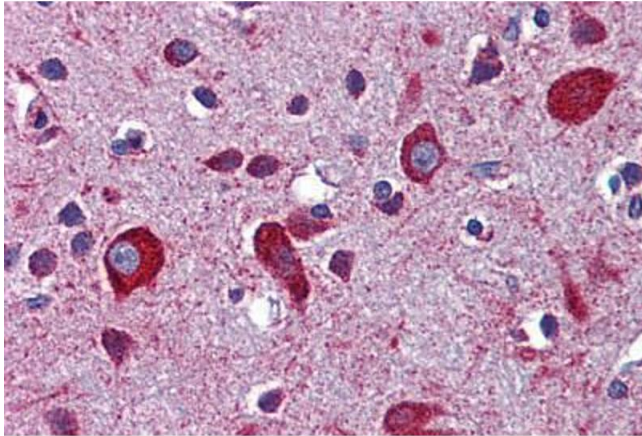
Handling Advice: Avoid repeat freeze-thaw cycles.

Storage: 4 °C,-20 °C

Handling

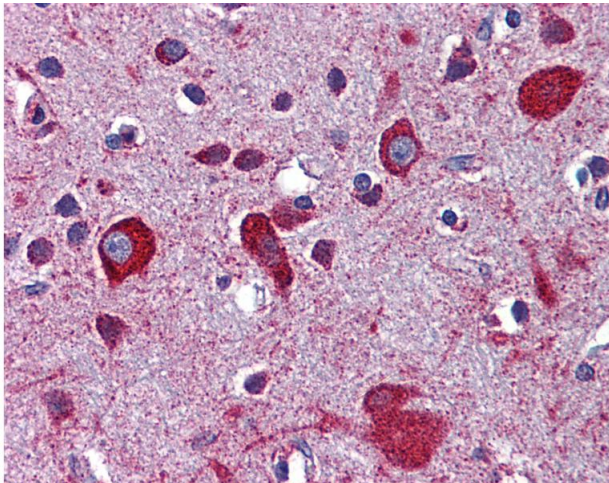
Storage Comment: Long term: -20°C, the use of 50% glycerol is recommended if storing aliquots in -20°C for long term use (up to 1 year)
Short term (less than 1 week): 4°C. Avoid freeze-thaw cycles.

Images



Immunohistochemistry (Formalin-fixed Paraffin-embedded Sections)

Image 1. Human Brain, Cortex: Formalin-Fixed, Paraffin-Embedded (FFPE)



Immunohistochemistry

Image 2. Anti-LRP8 antibody IHC of human brain, cortex. Immunohistochemistry of formalin-fixed, paraffin-embedded tissue after heat-induced antigen retrieval. Antibody concentration 5 ug/ml. This image was taken for the unconjugated form of this product. Oth ...