

Datasheet for ABIN768925

anti-DSCAM antibody (AA 1548-1597)



[Go to Product page](#)

2 Images

Overview

Quantity:	50 µg
Target:	DSCAM
Binding Specificity:	AA 1548-1597
Reactivity:	Human, Mouse, Rat, Dog, Horse, Rabbit, Monkey, Bat
Host:	Rabbit
Clonality:	Polyclonal
Application:	Western Blotting (WB), Immunohistochemistry (IHC), Immunohistochemistry (Paraffin-embedded Sections) (IHC (p))

Product Details

Brand:	IHC-plus™
Immunogen:	<p>Synthetic peptide located between aa1548-1597 of human DSCAM (O60469, NP_001380). Percent identity by BLAST analysis: Human, Chimpanzee, Gorilla, Monkey, Galago, Marmoset, Mouse, Rat, Elephant, Dog, Bat, Rabbit, Horse (100%), Bovine, Guinea pig, Turkey, Chicken, Lizard (92%), Opossum, Platypus, Xenopus (85%).</p> <p>Type of Immunogen: Synthetic peptide</p>
Isotype:	IgG
Specificity:	Human DSCAM
Predicted Reactivity:	Percent identity by BLAST analysis: Human, Mouse, Rat, Dog, Rabbit, Horse (100%) Bovine, Guinea pig, Chicken (92%) Xenopus (85%).

Product Details

Purification: Immunoaffinity purified

Target Details

Target: DSCAM

Alternative Name: DSCAM ([DSCAM Products](#))

Background: Name/Gene ID: DSCAM
Family: Immunoglobulin

Synonyms: DSCAM, CHD2-52, CHD2-42

Gene ID: 1826

NCBI Accession: [NP_001380](#)

UniProt: [O60469](#)

Pathways: [Regulation of Cell Size](#)

Application Details

Application Notes: Approved: IHC, IHC-P (5 µg/mL), WB (0.2 - 1 µg/mL)

Usage: Western Blot: Suggested dilution at 1 µg/mL in 5 % skim milk / PBS buffer, and HRP conjugated anti-Rabbit IgG should be diluted in 1: 50,000 - 100,000 as second antibody. ELISA titer in peptide based assay: 1:1562500.

Comment: Target Species of Antibody: Human

Restrictions: For Research Use only

Handling

Format: Lyophilized

Reconstitution: Distilled water

Concentration: Lot specific

Buffer: Lyophilized from PBS with 2 % sucrose

Handling Advice: Avoid repeat freeze-thaw cycles.

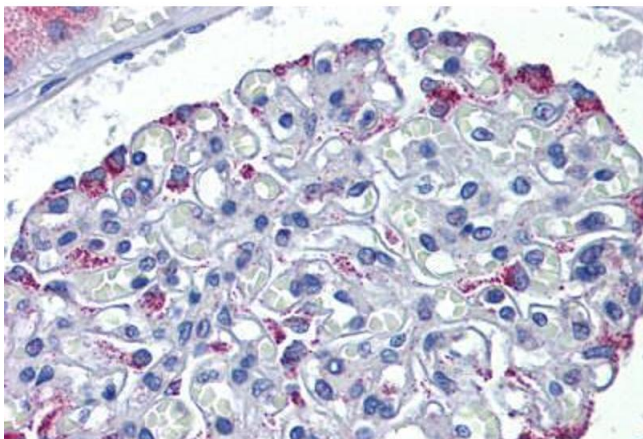
Storage: 4 °C, -20 °C

Handling

Storage Comment: Long term: -20°C, the use of 50% glycerol is recommended if storing aliquots in -20°C for long term use (up to 1 year)

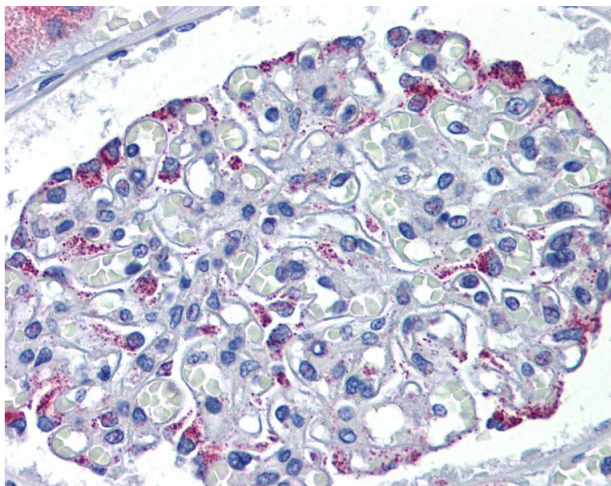
Short term (less than 1 week): 4°C. Avoid freeze-thaw cycles.

Images



Immunohistochemistry (Formalin-fixed Paraffin-embedded Sections)

Image 1. Human Kidney: Formalin-Fixed, Paraffin-Embedded (FFPE)



Immunohistochemistry

Image 2. Anti-DSCAM antibody IHC of human kidney. Immunohistochemistry of formalin-fixed, paraffin-embedded tissue after heat-induced antigen retrieval. Antibody concentration 5 ug/ml. This image was taken for the unconjugated form of this product. Other for ...