



[Go to Product page](#)

Datasheet for ABIN768934  
**anti-LYVE1 antibody (N-Term)**

2 Images

Overview

Quantity:	50 µg
Target:	LYVE1
Binding Specificity:	N-Term
Reactivity:	Human, Guinea Pig
Host:	Rabbit
Clonality:	Polyclonal
Conjugate:	This LYVE1 antibody is un-conjugated
Application:	Western Blotting (WB), Immunohistochemistry (IHC), Immunohistochemistry (Paraffin-embedded Sections) (IHC (p))

Product Details

Brand:	IHC-plus™
Immunogen:	Synthetic peptide from N-Terminus of human LYVE1 (Q9Y5Y7, NP_006682). Percent identity by BLAST analysis: Human, Chimpanzee, Gorilla, Gibbon (100%), Monkey, Galago, Bovine (92%), Horse (85%).  Type of Immunogen: Synthetic peptide
Isotype:	IgG
Specificity:	Human LYVE1 / LYVE-1
Predicted Reactivity:	Percent identity by BLAST analysis: Human (100%) Bovine (92%).
Purification:	Immunoaffinity purified

## Target Details

---

Target:	LYVE1
Alternative Name:	LYVE1 / LYVE-1 ( <a href="#">LYVE1 Products</a> )
Background:	Name/Gene ID: LYVE1  Synonyms: LYVE1, CRSBP-1, CRSBP1, Hyaluronic acid receptor, LYVE-1, XLKD1, HAR
Gene ID:	10894
NCBI Accession:	<a href="#">NP_006682</a>
Pathways:	<a href="#">Glycosaminoglycan Metabolic Process</a>

## Application Details

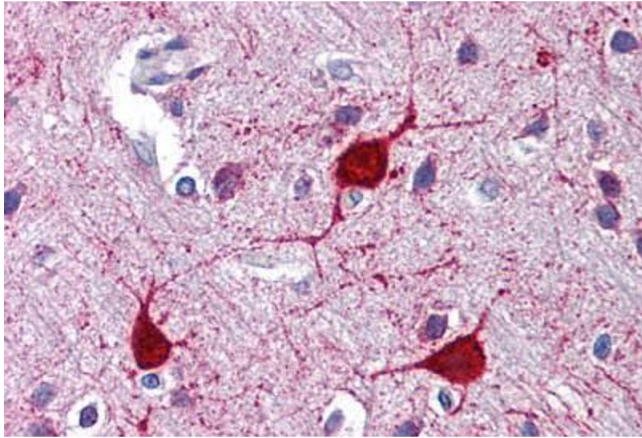
---

Application Notes:	Approved: IHC, IHC-P (5 µg/mL), WB (0.2 - 1 µg/mL)  Usage: Western Blot: Suggested dilution at 1 µg/mL in 5 % skim milk / PBS buffer, and HRP conjugated anti-Rabbit IgG should be diluted in 1: 50,000 - 100,000 as second antibody. ELISA titer in peptide based assay: 1:312500.
Comment:	Target Species of Antibody: Human
Restrictions:	For Research Use only

## Handling

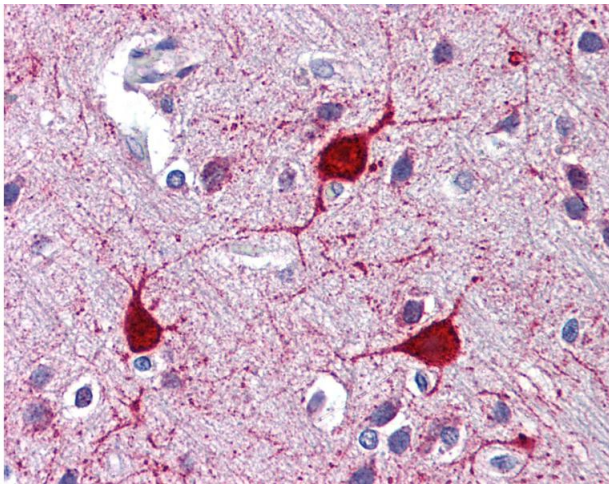
---

Format:	Lyophilized
Reconstitution:	Reconstitute with 50 µL sterile ddH <sub>2</sub> O.
Concentration:	Lot specific
Buffer:	Lyophilized from PBS with 2 % sucrose
Handling Advice:	Avoid repeat freeze-thaw cycles.
Storage:	4 °C, -20 °C
Storage Comment:	Long term: -20°C, the use of 50% glycerol is recommended if storing aliquots in -20°C for long term use (up to 1 year)  Short term (less than 1 week): 4°C. Avoid freeze-thaw cycles.



### Immunohistochemistry (Formalin-fixed Paraffin-embedded Sections)

**Image 1.** Human Brain, Cortex: Formalin-Fixed, Paraffin-Embedded (FFPE)



### Immunohistochemistry

**Image 2.** Anti-LYVE1 / LYVE-1 antibody IHC of human brain, cortex. Immunohistochemistry of formalin-fixed, paraffin-embedded tissue after heat-induced antigen retrieval. Antibody concentration 5 ug/ml. This image was taken for the unconjugated form of this pr ...