



[Go to Product page](#)

Datasheet for ABIN768956

## anti-ACSL4 antibody (N-Term)

### 2 Images

#### Overview

Quantity:	50 µg
Target:	ACSL4
Binding Specificity:	N-Term
Reactivity:	Human, Mouse, Rat, Cow, Dog, Horse, Rabbit, Pig, Guinea Pig, Bat, Monkey
Host:	Rabbit
Clonality:	Polyclonal
Application:	Western Blotting (WB), Immunohistochemistry (IHC), Immunohistochemistry (Paraffin-embedded Sections) (IHC (p))

#### Product Details

Brand:	IHC-plus™
Immunogen:	Synthetic peptide from N-Terminus of human ACSL4 (O60488, NP_004449). Percent identity by BLAST analysis: Human, Chimpanzee, Gorilla, Gibbon, Monkey, Galago, Marmoset, Mouse, Rat, Elephant, Panda, Dog, Bovine, Bat, Rabbit, Horse, Pig, Guinea pig (100%), Opossum, Turkey, Zebra finch, Chicken, Xenopus (92%), Platypus (85%).  Type of Immunogen: Synthetic peptide
Isotype:	IgG
Specificity:	Human ACSL4 / FAACL4
Predicted Reactivity:	Percent identity by BLAST analysis: Human, Mouse, Rat, Dog, Bovine, Rabbit, Horse, Pig, Guinea pig (100%) Chicken, Xenopus (92%).

## Product Details

---

Purification: Immunoaffinity purified

## Target Details

---

Target: ACSL4

Alternative Name: ACSL4 / FAACL4 ([ACSL4 Products](#))

Background: Name/Gene ID: ACSL4

Synonyms: ACSL4, Acyl-CoA synthetase 4, ACS4, FAACL4, LACS4, LACS 4, Lignoceroyl-CoA synthase, MRX63, MRX68

Gene ID: 2182

NCBI Accession: [NP\\_004449](#)

UniProt: [O60488](#)

## Application Details

---

Application Notes: Approved: IHC, IHC-P (5 µg/mL), WB (0.2 - 1 µg/mL)

Usage: ELISA titer using peptide based assay: 1:1562500. Western Blot: Suggested dilution at 1 µg/mL in 5 % skim milk / PBS buffer, and HRP conjugated anti-Rabbit IgG should be diluted in 1:50000 - 100000 as second antibody.

Comment: Target Species of Antibody: Human

Restrictions: For Research Use only

## Handling

---

Format: Lyophilized

Reconstitution: Distilled Water.

Concentration: Lot specific

Buffer: Lyophilized from PBS with 2 % sucrose

Handling Advice: Avoid repeat freeze-thaw cycles.

Storage: 4 °C, -20 °C

Storage Comment: Long term: -20°C, the use of 50% glycerol is recommended if storing aliquots in -20°C for long

## Handling

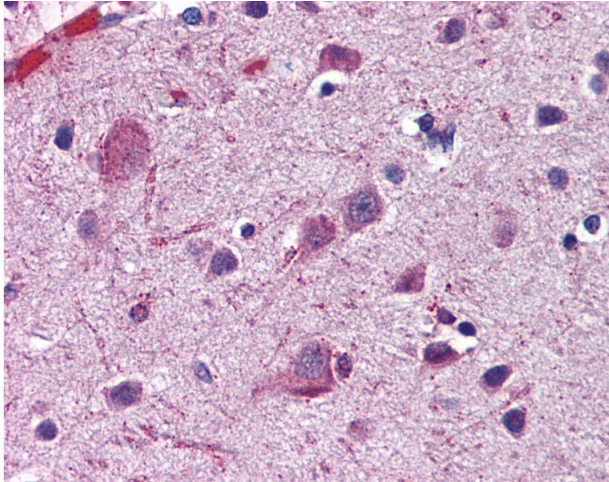
---

term use (up to 1 year)

Short term (less than 1 week): 4°C. Avoid freeze-thaw cycles.

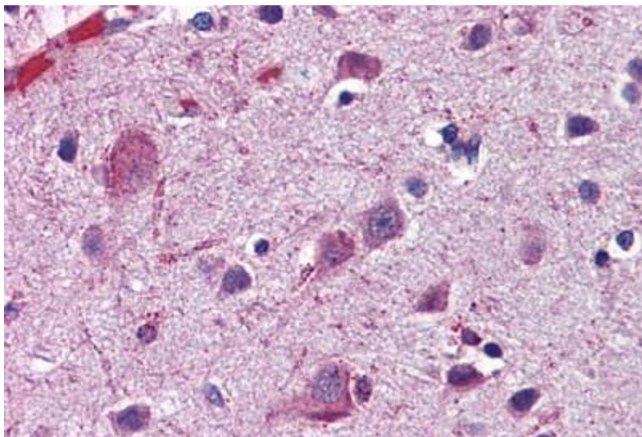
## Images

---



### Immunohistochemistry

**Image 1.** Anti-ACSL4 antibody IHC of human brain, cortex. Immunohistochemistry of formalin-fixed, paraffin-embedded tissue after heat-induced antigen retrieval. Antibody concentration 5 ug/ml. This image was taken for the unconjugated form of this product. Ot ...



### Immunohistochemistry (Formalin-fixed Paraffin-embedded Sections)

**Image 2.** Human Brain, Cortex: Formalin-Fixed, Paraffin-Embedded (FFPE)