

Datasheet for ABIN768964
anti-SERPINA3 antibody (AA 254-303)[Go to Product page](#)

2 Images

Overview

Quantity:	50 µg
Target:	SERPINA3
Binding Specificity:	AA 254-303
Reactivity:	Human, Mouse, Rat, Hamster
Host:	Rabbit
Clonality:	Polyclonal
Conjugate:	This SERPINA3 antibody is un-conjugated
Application:	Western Blotting (WB), Immunohistochemistry (IHC), Immunohistochemistry (Paraffin-embedded Sections) (IHC (p))

Product Details

Brand:	IHC-plus™
Immunogen:	Synthetic peptide located between aa254-303 of human SERPINA3 (P01011, NP_001076). Percent identity by BLAST analysis: Human, Chimpanzee, Gorilla, Orangutan, Gibbon, Mouse, Rat, Hamster (100%), Galago, Marmoset (84%). Type of Immunogen: Synthetic peptide
Isotype:	IgG
Specificity:	Human SERPINA3 isoform 1
Predicted Reactivity:	Percent identity by BLAST analysis: Human, Mouse (100%) Rat (83%).
Purification:	Immunoaffinity purified

Target Details

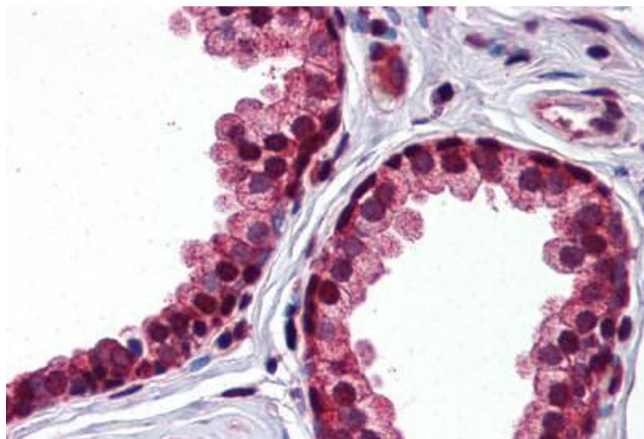
Target:	SERPINA3
Alternative Name:	SERPINA3 (SERPINA3 Products)
Background:	Name/Gene ID: SERPINA3 Synonyms: SERPINA3, Alpha-1-antichymotrypsin, AACT, GIG25, Growth-inhibiting protein 25, GIG24, Serpin A3, Growth-inhibiting protein 24
Gene ID:	12
NCBI Accession:	NP_001076
UniProt:	P01011

Application Details

Application Notes:	Approved: IHC, IHC-P (2.5 µg/mL), WB (0.2 - 1 µg/mL) Usage: ELISA titer using peptide based assay: 1:62500. Western Blot: Suggested dilution at 1 µg/mL in 5 % skim milk / PBS buffer, and HRP conjugated anti-Rabbit IgG should be diluted in 1:50000 - 100000 as second antibody.
Comment:	Target Species of Antibody: Human
Restrictions:	For Research Use only

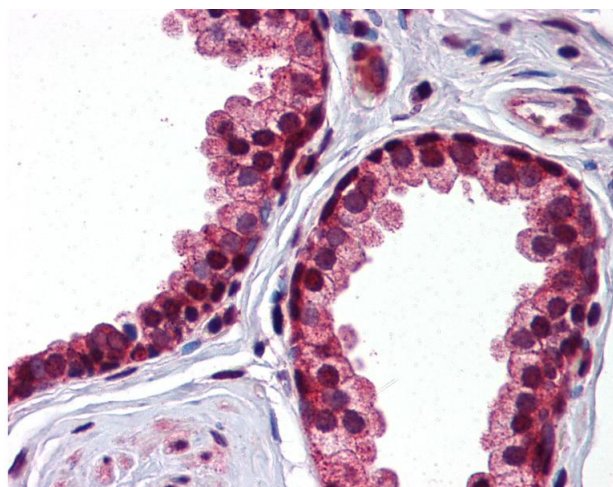
Handling

Format:	Lyophilized
Reconstitution:	Distilled water
Concentration:	Lot specific
Buffer:	Lyophilized from PBS with 2 % sucrose
Handling Advice:	Avoid repeat freeze-thaw cycles.
Storage:	4 °C,-20 °C
Storage Comment:	Long term: -20°C, the use of 50% glycerol is recommended if storing aliquots in -20°C for long term use (up to 1 year) Short term (less than 1 week): 4°C. Avoid freeze-thaw cycles.



Immunohistochemistry (Formalin-fixed Paraffin-embedded Sections)

Image 1. Human Prostate: Formalin-Fixed, Paraffin-Embedded (FFPE)



Immunohistochemistry

Image 2. Anti-SERPINA3 antibody IHC of human prostate. Immunohistochemistry of formalin-fixed, paraffin-embedded tissue after heat-induced antigen retrieval. Antibody concentration 2.5 ug/ml. This image was taken for the unconjugated form of this product. Ot ...