

Datasheet for ABIN768969  
**anti-ARL8A antibody (AA 72-121)**

## 2 Images

[Go to Product page](#)

## Overview

Quantity:	50 µg
Target:	ARL8A
Binding Specificity:	AA 72-121
Reactivity:	Human, Mouse, Rat, Rabbit, Cow, Sheep, Horse, Chicken, Monkey
Host:	Rabbit
Clonality:	Polyclonal
Application:	Western Blotting (WB), Immunohistochemistry (IHC), Immunohistochemistry (Paraffin-embedded Sections) (IHC (p))

## Product Details

Brand:	IHC-plus™
Immunogen:	Synthetic peptide located between aa72-121 of human ARL8A (Q96BM9, NP_620150). Percent identity by BLAST analysis: Human, Chimpanzee, Gorilla, Gibbon, Monkey, Galago, Marmoset, Mouse, Rat, Sheep, Elephant, Bovine, Rabbit, Horse, Opossum, Turkey, Zebra finch, Chicken, Platypus (100%), Guinea pig, Lizard, Xenopus, Salmon, Zebrafish (92%), Dog, Bat, Pig, Seabass (85%).  Type of Immunogen: Synthetic peptide
Isotype:	IgG
Specificity:	Human ARL8B / ARL8A
Predicted Reactivity:	Percent identity by BLAST analysis: Human, Mouse, Rat, Sheep, Bovine, Rabbit, Chicken (100%)

## Product Details

Guinea pig (92%).

Purification: Immunoaffinity purified

## Target Details

Target: ARL8A

Alternative Name: ARL8B / ARL8A ([ARL8A Products](#))

Background: Name/Gene ID: ARL8B

Synonyms: ARL8B, Gie1, ARL10C

Gene ID: 55207

NCBI Accession: [NP\\_620150](#)

UniProt: [Q96BM9](#)

## Application Details

Application Notes: Approved: IHC, IHC-P (5 µg/mL), WB (0.2 - 1 µg/mL)

Usage: Western Blot: Suggested dilution at 1 µg/mL in 5 % skim milk / PBS buffer, and HRP conjugated anti-Rabbit IgG should be diluted in 1: 50,000 - 100,000 as second antibody. ELISA titer in peptide based assay: 1:12500.

Comment: Target Species of Antibody: Human

Restrictions: For Research Use only

## Handling

Format: Lyophilized

Reconstitution: Distilled water

Concentration: Lot specific

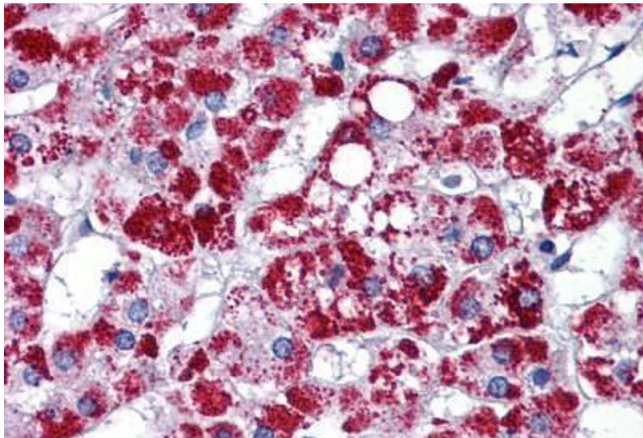
Buffer: Lyophilized from PBS with 2 % sucrose

Handling Advice: Avoid repeat freeze-thaw cycles.

Storage: 4 °C, -20 °C

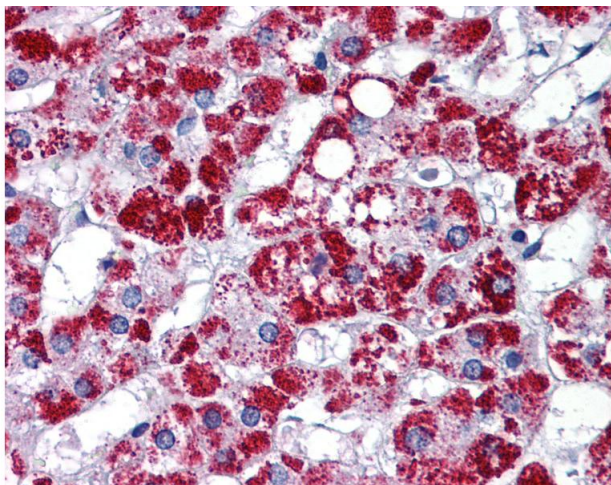
Storage Comment: Long term: -20°C, the use of 50% glycerol is recommended if storing aliquots in -20°C for long

term use (up to 1 year)  
Short term (less than 1 week): 4°C. Avoid freeze-thaw cycles.



**Immunohistochemistry (Formalin-fixed Paraffin-embedded Sections)**

**Image 1.** Human Adrenal: Formalin-Fixed, Paraffin-Embedded (FFPE)



**Immunohistochemistry**

**Image 2.** Anti-ARL8B / ARL8A antibody IHC of human adrenal. Immunohistochemistry of formalin-fixed, paraffin-embedded tissue after heat-induced antigen retrieval. Antibody concentration 5 ug/ml. This image was taken for the unconjugated form of this product. ...