

Datasheet for ABIN768977

anti-SQSTM1 antibody (AA 323-372)



[Go to Product page](#)

2 Images

Overview

Quantity:	50 µg
Target:	SQSTM1
Binding Specificity:	AA 323-372
Reactivity:	Human, Mouse, Rat, Cow, Monkey, Sheep, Horse, Rabbit, Pig, Dog, Guinea Pig, Chicken, Bat
Host:	Rabbit
Clonality:	Polyclonal
Application:	Western Blotting (WB), Immunohistochemistry (IHC), Immunohistochemistry (Paraffin-embedded Sections) (IHC (p))

Product Details

Brand:	IHC-plus™
Immunogen:	<p>Synthetic peptide located between aa323-372 of human SQSTM1 (Q13501, NP_003891).</p> <p>Percent identity by BLAST analysis: Human, Chimpanzee, Gorilla, Orangutan, Gibbon, Monkey, Galago, Marmoset, Mouse, Rat, Sheep, Elephant, Dog, Bovine, Bat, Rabbit, Horse, Pig, Opossum, Guinea pig, Turkey, Zebra finch, Chicken, Platypus (100%), Xenopus, Salmon, Stickleback, Zebrafish (92%).</p> <p>Type of Immunogen: Synthetic peptide</p>
Specificity:	Human SQSTM1
Predicted Reactivity:	Percent identity by BLAST analysis: Human, Sheep, Dog, Bovine, Rabbit, Horse, Guinea pig, Chicken (100%) Xenopus, Zebrafish (92%).

Product Details

Purification: Immunoaffinity purified

Target Details

Target: SQSTM1

Alternative Name: p62 / SQSTM1 ([SQSTM1 Products](#))

Background: Name/Gene ID: SQSTM1

Synonyms: SQSTM1, A170, ORCA, OSIL, Paget disease of bone 3, p60, p62, PDB3, Sequestosome-1, Ubiquitin-binding protein p62, Oxidative stress induced like, p62B, ZIP3, Sequestosome 1, EBI3-associated protein p60, EBIAP

Gene ID: 8878

NCBI Accession: [NP_003891](#)

UniProt: [Q13501](#)

Pathways: [NF-kappaB Signaling](#), [Neurotrophin Signaling Pathway](#), [Autophagy](#)

Application Details

Application Notes: Approved: IHC, IHC-P (5 µg/mL), WB (0.2 - 1 µg/mL)

Usage: Western Blot: Suggested dilution at 1 µg/mL in 5 % skim milk / PBS buffer, and HRP conjugated anti-Rabbit IgG should be diluted in 1: 50,000 - 100,000 as secondary antibody.

Comment: Target Species of Antibody: Human

Restrictions: For Research Use only

Handling

Format: Lyophilized

Reconstitution: Distilled water

Concentration: Lot specific

Buffer: Lyophilized from PBS with 2 % sucrose

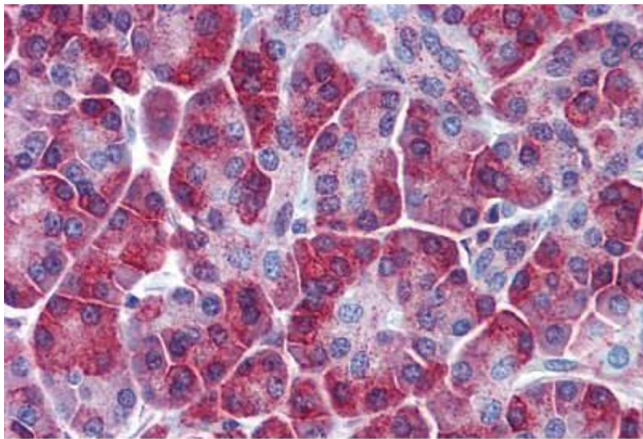
Handling Advice: Avoid repeat freeze-thaw cycles.

Storage: 4 °C, -20 °C

Handling

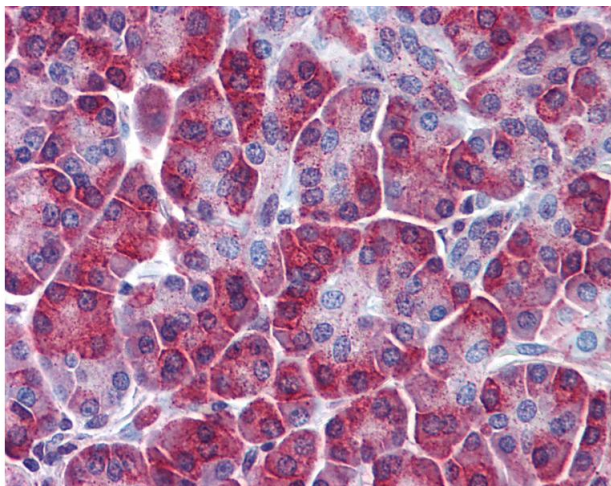
Storage Comment:	Long term: -20°C, the use of 50% glycerol is recommended if storing aliquots in -20°C for long term use (up to 1 year) Short term (less than 1 week): 4°C. Avoid freeze-thaw cycles.
------------------	---

Images



Immunohistochemistry (Formalin-fixed Paraffin-embedded Sections)

Image 1. Human Pancreas: Formalin-Fixed, Paraffin-Embedded (FFPE)



Immunohistochemistry

Image 2. Anti-SQSTM1 antibody IHC of human pancreas. Immunohistochemistry of formalin-fixed, paraffin-embedded tissue after heat-induced antigen retrieval. Antibody concentration 5 ug/ml. This image was taken for the unconjugated form of this product. Other ...