

Datasheet for ABIN768981

anti-LTA4H antibody (AA 467-516)



[Go to Product page](#)

2 Images

Overview

Quantity:	50 µg
Target:	LTA4H
Binding Specificity:	AA 467-516
Reactivity:	Human, Mouse, Rat, Dog, Horse, Rabbit, Monkey, Bat
Host:	Rabbit
Clonality:	Polyclonal
Conjugate:	This LTA4H antibody is un-conjugated
Application:	Western Blotting (WB), Immunohistochemistry (IHC), Immunohistochemistry (Paraffin-embedded Sections) (IHC (p))

Product Details

Brand:	IHC-plus™
Immunogen:	Synthetic peptide located between aa467-516 of human LTA4H (P09960, NP_000886). Percent identity by BLAST analysis: Human, Chimpanzee, Gorilla, Orangutan, Gibbon, Monkey, Galago, Marmoset, Mouse, Rat, Elephant, Panda, Dog, Bat, Rabbit, Horse (100%), Pig, Guinea pig (92%), Bovine (85%), Opossum, Lizard (84%). Type of Immunogen: Synthetic peptide
Isotype:	IgG
Specificity:	Human LTA4H
Predicted Reactivity:	Percent identity by BLAST analysis: Human, Rat, Dog, Rabbit, Horse (100%) Pig, Guinea pig

Product Details

(92%).

Purification: Immunoaffinity purified

Target Details

Target: LTA4H

Alternative Name: LTA4H / LTA4 ([LTA4H Products](#))

Background: Name/Gene ID: LTA4H

Subfamily: Metallopeptidase M1

Family: Exopeptidase

Synonyms: LTA4H, Leukotriene A(4) hydrolase, Leukotriene A4 hydrolase, Leukotriene A-4 hydrolase, LTA-4 hydrolase, LTA4

Gene ID: 4048

NCBI Accession: [NP_000886](#)

UniProt: [P09960](#)

Application Details

Application Notes: Approved: IHC, IHC-P (5 µg/mL), WB (0.2 - 1 µg/mL)

Usage: Western Blot: Suggested dilution at 1 µg/mL in 5 % skim milk / PBS buffer, and HRP conjugated anti-Rabbit IgG should be diluted in 1: 50,000 - 100,000 as second antibody. ELISA titer in peptide based assay: 1:312500.

Comment: Target Species of Antibody: Human

Restrictions: For Research Use only

Handling

Format: Lyophilized

Reconstitution: Distilled water

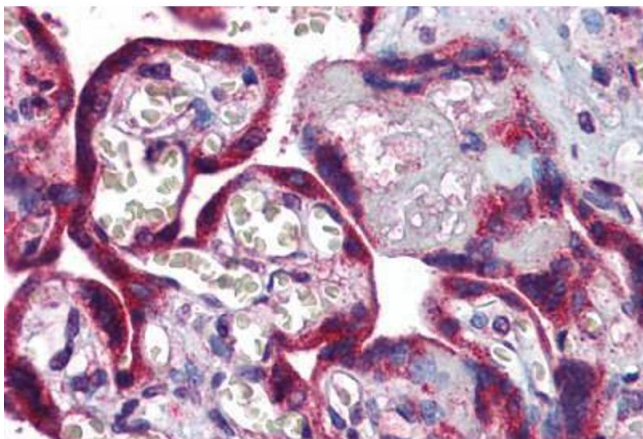
Concentration: Lot specific

Buffer: Lyophilized from PBS with 2 % sucrose

Handling

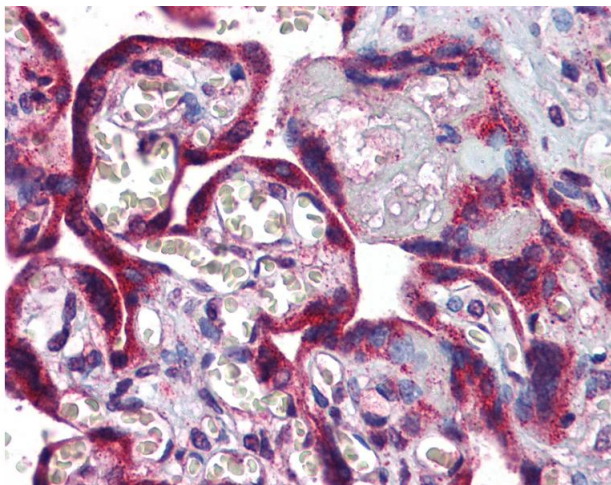
Handling Advice:	Avoid repeat freeze-thaw cycles.
Storage:	4 °C,-20 °C
Storage Comment:	Long term: -20°C, the use of 50% glycerol is recommended if storing aliquots in -20°C for long term use (up to 1 year) Short term (less than 1 week): 4°C. Avoid freeze-thaw cycles.

Images



Immunohistochemistry (Formalin-fixed Paraffin-embedded Sections)

Image 1. Human Placenta: Formalin-Fixed, Paraffin-Embedded (FFPE)



Immunohistochemistry

Image 2. Anti-LTA4H antibody IHC of human placenta. Immunohistochemistry of formalin-fixed, paraffin-embedded tissue after heat-induced antigen retrieval. Antibody concentration 5 ug/ml. This image was taken for the unconjugated form of this product. Other f ...