

Datasheet for ABIN769002
anti-FGF21 antibody (N-Term)[Go to Product page](#)

3 Images

Overview

Quantity:	50 µg
Target:	FGF21
Binding Specificity:	N-Term
Reactivity:	Human, Mouse, Rat, Pig, Monkey, Cow, Dog, Guinea Pig, Horse
Host:	Rabbit
Clonality:	Polyclonal
Application:	Western Blotting (WB), Immunohistochemistry (IHC), Immunohistochemistry (Paraffin-embedded Sections) (IHC (p))

Product Details

Brand:	IHC-plus™
Immunogen:	Synthetic peptide from N-Terminus of human FGF21 (Q9NSA1, NP_061986). Percent identity by BLAST analysis: Human, Chimpanzee, Gorilla, Gibbon, Monkey, Galago, Marmoset, Mouse, Rat, Elephant, Dog, Bovine, Horse, Pig, Guinea pig (100%), Rabbit (92%). Type of Immunogen: Synthetic peptide
Specificity:	Human FGF21
Predicted Reactivity:	Percent identity by BLAST analysis: Human, Mouse, Rat, Dog, Bovine, Pig (100%).
Purification:	Immunoaffinity purified

Target Details

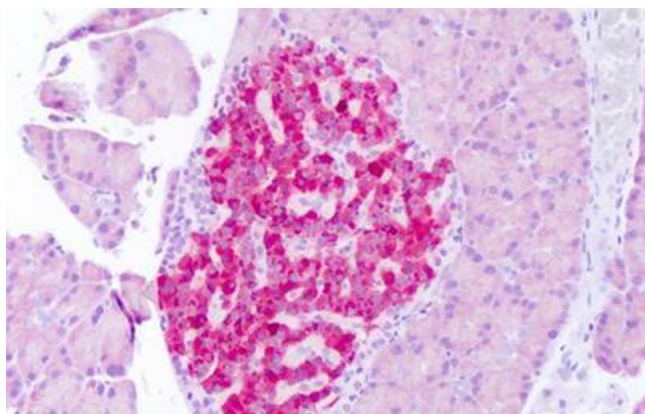
Target:	FGF21
Alternative Name:	FGF21 (FGF21 Products)
Background:	Name/Gene ID: FGF21 Family: HBGF Synonyms: FGF21, Fibroblast growth factor 21, FGF-21
Gene ID:	26291
NCBI Accession:	NP_061986
UniProt:	Q9NSA1
Pathways:	RTK Signaling

Application Details

Application Notes:	Approved: IHC, IHC-P (5 µg/mL), WB (0.2 - 1 µg/mL) Usage: Western Blot: Suggested dilution at 1 µg/mL in 5 % skim milk / PBS buffer, and HRP conjugated anti-Rabbit IgG should be diluted in 1: 50,000 - 100,000 as secondary antibody.
Comment:	Target Species of Antibody: Human
Restrictions:	For Research Use only

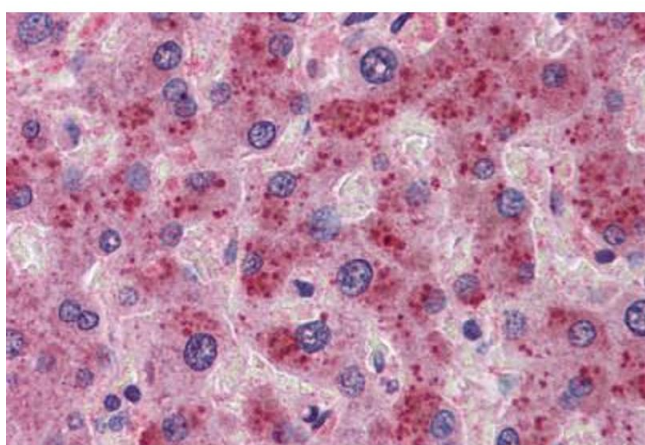
Handling

Format:	Lyophilized
Reconstitution:	Distilled water
Concentration:	Lot specific
Buffer:	Lyophilized from PBS with 2 % sucrose
Handling Advice:	Avoid repeat freeze-thaw cycles.
Storage:	4 °C,-20 °C
Storage Comment:	Long term: -20°C, the use of 50% glycerol is recommended if storing aliquots in -20°C for long term use (up to 1 year) Short term (less than 1 week): 4°C. Avoid freeze-thaw cycles.



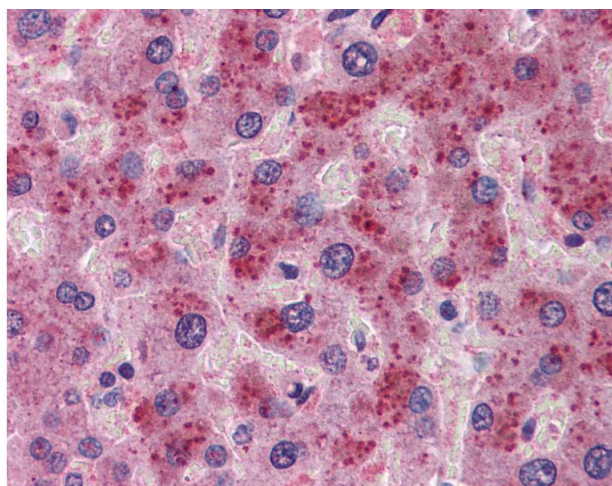
Immunohistochemistry

Image 1. Anti-FGF21 antibody IHC staining of rat pancreas. Immunohistochemistry of formalin-fixed, paraffin-embedded tissue after heat-induced antigen retrieval. Antibody ABIN769002 concentration 5 ug/ml.



Immunohistochemistry (Formalin-fixed Paraffin-embedded Sections)

Image 2. Human Liver: Formalin-Fixed, Paraffin-Embedded (FFPE)



Immunohistochemistry

Image 3. Anti-FGF21 antibody IHC of human liver. Immunohistochemistry of formalin-fixed, paraffin-embedded tissue after heat-induced antigen retrieval. Antibody concentration 5 ug/ml. This image was taken for the unconjugated form of this product. Other form ...