

Datasheet for ABIN769004
anti-SPNS2 antibody (AA 71-120)

2 Images

[Go to Product page](#)

Overview

Quantity:	50 µg
Target:	SPNS2
Binding Specificity:	AA 71-120
Reactivity:	Human, Mouse, Monkey, Pig, Bat
Host:	Rabbit
Clonality:	Polyclonal
Conjugate:	This SPNS2 antibody is un-conjugated
Application:	Western Blotting (WB), Immunohistochemistry (IHC), Immunohistochemistry (Paraffin-embedded Sections) (IHC (p))

Product Details

Brand:	IHC-plus™
Immunogen:	Synthetic peptide located between aa71-120 of human SPNS2 (Q8IVW8, NP_001118230). Percent identity by BLAST analysis: Human, Gorilla, Gibbon, Monkey, Bat, Pig (100%), Galago, Rat (92%), Rabbit (91%), Mouse (84%). Type of Immunogen: Synthetic peptide
Specificity:	Human SPNS2
Predicted Reactivity:	Percent identity by BLAST analysis: Human, Pig (100%) Rat (92%) Rabbit (91%) Mouse (84%).
Purification:	Immunoaffinity purified

Target Details

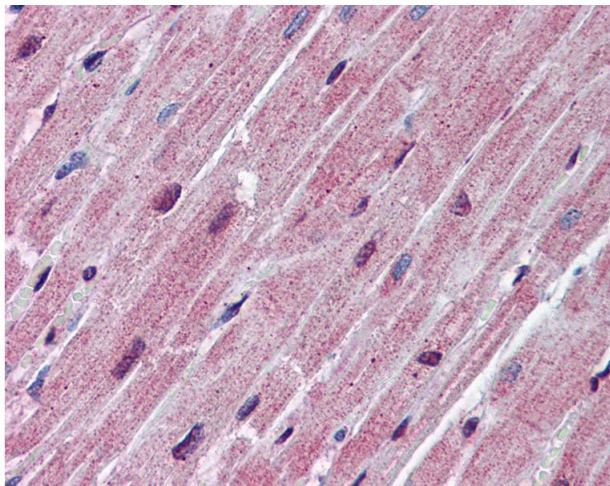
Target:	SPNS2
Alternative Name:	SPNS2 (SPNS2 Products)
Background:	Name/Gene ID: SPNS2 Synonyms: SPNS2, Protein spinster homolog 2
Gene ID:	124976
NCBI Accession:	NP_001118230
UniProt:	Q8IVW8

Application Details

Application Notes:	Approved: IHC, IHC-P (5 µg/mL), WB (0.2 - 1 µg/mL) Usage: Western Blot: Suggested dilution at 1 µg/mL in 5 % skim milk / PBS buffer, and HRP conjugated anti-Rabbit IgG should be diluted in 1: 50,000 - 100,000 as secondary antibody.
Comment:	Target Species of Antibody: Human
Restrictions:	For Research Use only

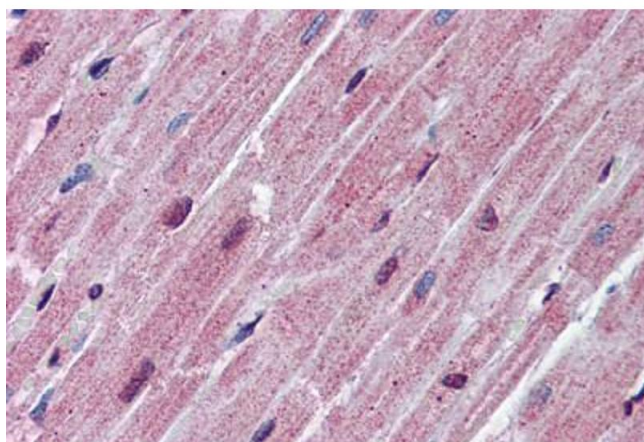
Handling

Format:	Lyophilized
Reconstitution:	Reconstitute with 50 µL sterile ddH ₂ O.
Concentration:	Lot specific
Buffer:	Lyophilized from PBS with 2 % sucrose
Handling Advice:	Avoid repeat freeze-thaw cycles.
Storage:	4 °C, -20 °C
Storage Comment:	Long term: -20°C, the use of 50% glycerol is recommended if storing aliquots in -20°C for long term use (up to 1 year) Short term (less than 1 week): 4°C. Avoid freeze-thaw cycles.



Immunohistochemistry

Image 1. Anti-SPNS2 antibody IHC of human heart. Immunohistochemistry of formalin-fixed, paraffin-embedded tissue after heat-induced antigen retrieval. Antibody concentration 5 ug/ml. This image was taken for the unconjugated form of this product. Other form ...



Immunohistochemistry (Formalin-fixed Paraffin-embedded Sections)

Image 2. Human Heart: Formalin-Fixed, Paraffin-Embedded (FFPE)