



Datasheet for ABIN769026
anti-DYRK1A antibody (AA 22-71)



[Go to Product page](#)

2 Images

Overview

Quantity:	50 µg
Target:	DYRK1A
Binding Specificity:	AA 22-71
Reactivity:	Human, Mouse, Rat, Rabbit, Cow, Guinea Pig, Horse, Pig, Monkey, Bat
Host:	Rabbit
Clonality:	Polyclonal
Application:	Western Blotting (WB), Immunohistochemistry (IHC), Immunohistochemistry (Paraffin-embedded Sections) (IHC (p))

Product Details

Brand:	IHC-plus™
Immunogen:	Synthetic peptide located between aa22-71 of mouse Dyrk1a (Q63470, NP_031916). Percent identity by BLAST analysis: Human, Gibbon, Galago, Marmoset, Rat, Elephant, Bovine, Bat, Rabbit, Horse, Pig, Opossum, Guinea pig (100%), Mouse, Dog, Zebra finch, Platypus (92%), Turkey, Chicken (85%). Type of Immunogen: Synthetic peptide
Specificity:	Mouse DYRK1A
Predicted Reactivity:	Percent identity by BLAST analysis: Human, Bovine, Rabbit, Horse, Pig, Guinea pig (100%) Mouse, Dog (92%) Chicken (85%).
Purification:	Immunoaffinity purified

Target Details

Target:	DYRK1A
Alternative Name:	DYRK / DYRK1A (DYRK1A Products)
Background:	Name/Gene ID: DYRK1A Subfamily: MNB/DYRK Family: Protein Kinase Synonyms: DYRK1A, DYRK1, DYRK, HMNB, HP86, MNB, MNB/DYRK protein kinase, MRD7, MNBH, Serine/threonine kinase MNB, Yak1-related kinase
Gene ID:	1859
NCBI Accession:	NP_031916
UniProt:	Q13627
Pathways:	Mitotic G1-G1/S Phases

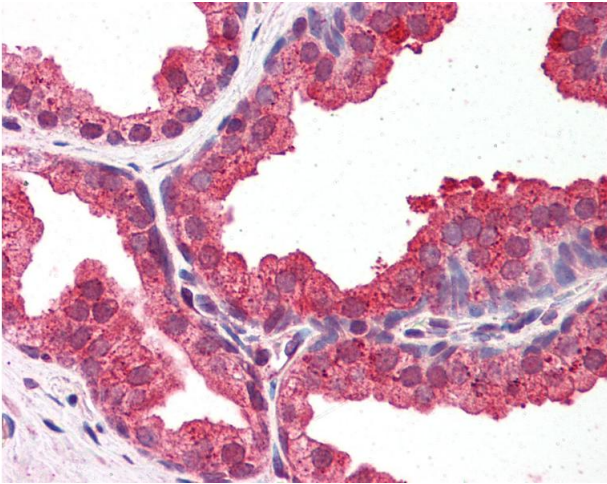
Application Details

Application Notes:	Approved: IHC, IHC-P (5 µg/mL), WB (0.2 - 1 µg/mL) Usage: Western Blot: Suggested dilution at 1 µg/mL in 5 % skim milk / PBS buffer, and HRP conjugated anti-Rabbit IgG should be diluted in 1: 50,000 - 100,000 as secondary antibody.
Comment:	Target Species of Antibody: Mouse
Restrictions:	For Research Use only

Handling

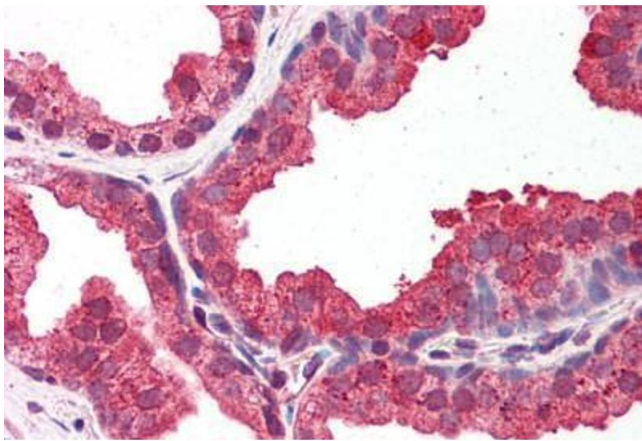
Format:	Lyophilized
Reconstitution:	Distilled water
Concentration:	Lot specific
Buffer:	Lyophilized from PBS with 2 % sucrose
Handling Advice:	Avoid repeat freeze-thaw cycles.
Storage:	4 °C,-20 °C
Storage Comment:	Long term: -20°C, the use of 50% glycerol is recommended if storing aliquots in -20°C for long term use (up to 1 year)

Short term (less than 1 week): 4°C. Avoid freeze-thaw cycles.



Immunohistochemistry

Image 1. Anti-DYRK1A antibody IHC of human prostate. Immunohistochemistry of formalin-fixed, paraffin-embedded tissue after heat-induced antigen retrieval. Antibody concentration 5 ug/ml. This image was taken for the unconjugated form of this product. Other ...



Immunohistochemistry (Formalin-fixed Paraffin-embedded Sections)

Image 2. Human Prostate: Formalin-Fixed, Paraffin-Embedded (FFPE)