



Datasheet for ABIN769027  
**anti-FTO antibody (N-Term)**



[Go to Product page](#)

2 Images

Overview

Quantity:	50 µg
Target:	FTO
Binding Specificity:	N-Term
Reactivity:	Human, Mouse, Rat, Cow, Sheep, Pig, Horse, Monkey, Hamster
Host:	Rabbit
Clonality:	Polyclonal
Conjugate:	This FTO antibody is un-conjugated
Application:	Western Blotting (WB), Immunohistochemistry (IHC), Immunohistochemistry (Paraffin-embedded Sections) (IHC (p))

Product Details

Brand:	IHC-plus™
Immunogen:	Synthetic peptide from N-Terminus of mouse Fto (Q8BGW1, NP_036066). Percent identity by BLAST analysis: Human, Gorilla, Orangutan, Gibbon, Marmoset, Mouse, Rat, Sheep, Hamster, Panda, Bovine, Horse, Pig (100%), Elephant, Rabbit (92%).  Type of Immunogen: Synthetic peptide
Specificity:	Mouse FTO
Predicted Reactivity:	Percent identity by BLAST analysis: Human, Mouse, Rat, Sheep, Bovine, Horse, Pig (100%) Rabbit (92%).
Purification:	Immunoaffinity purified

## Target Details

---

Target:	FTO
Alternative Name:	FTO ( <a href="#">FTO Products</a> )
Background:	Name/Gene ID: FTO  Synonyms: FTO, KIAA1752, Protein fto
Gene ID:	79068
NCBI Accession:	<a href="#">NP_036066</a>
UniProt:	<a href="#">Q9C0B1</a>

## Application Details

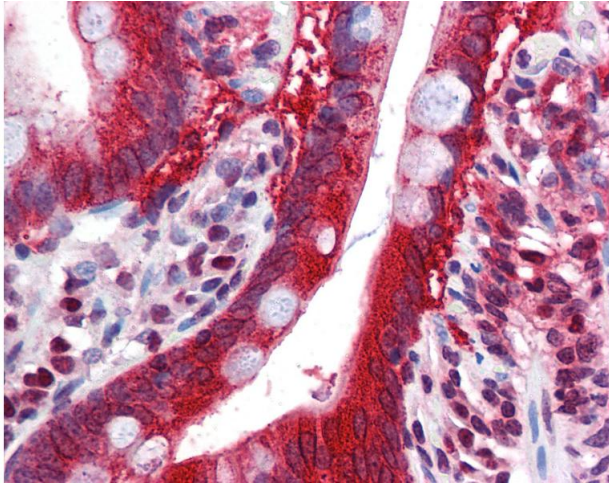
---

Application Notes:	Approved: IHC, IHC-P (5 µg/mL), WB (0.2 - 1 µg/mL)  Usage: Western Blot: Suggested dilution at 1 µg/mL in 5 % skim milk / PBS buffer, and HRP conjugated anti-Rabbit IgG should be diluted in 1: 50,000 - 100,000 as secondary antibody.
Comment:	Target Species of Antibody: Mouse
Restrictions:	For Research Use only

## Handling

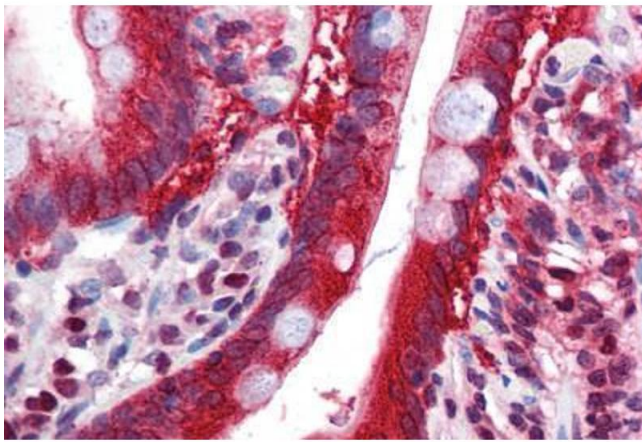
---

Format:	Lyophilized
Reconstitution:	Distilled water
Concentration:	Lot specific
Buffer:	Lyophilized from PBS with 2 % sucrose
Handling Advice:	Avoid repeat freeze-thaw cycles.
Storage:	4 °C, -20 °C
Storage Comment:	Long term: -20°C, the use of 50% glycerol is recommended if storing aliquots in -20°C for long term use (up to 1 year)  Short term (less than 1 week): 4°C. Avoid freeze-thaw cycles.



### Immunohistochemistry

**Image 1.** Anti-FTO antibody IHC of human small intestine. Immunohistochemistry of formalin-fixed, paraffin-embedded tissue after heat-induced antigen retrieval. Antibody concentration 5 ug/ml. This image was taken for the unconjugated form of this product. Ot ...



### Immunohistochemistry (Formalin-fixed Paraffin-embedded Sections)

**Image 2.** Human Small Intestine: Formalin-Fixed, Paraffin-Embedded (FFPE)