



Datasheet for ABIN775718  
**anti-Lambda-IgLC antibody (PE)**



[Go to Product page](#)

3 Images

3 Publications

### Overview

Quantity:	100 tests
Target:	Lambda-IgLC
Reactivity:	Human
Host:	Mouse
Clonality:	Monoclonal
Conjugate:	This Lambda-IgLC antibody is conjugated to PE
Application:	Flow Cytometry (FACS)

### Product Details

Immunogen:	Human IgA1 lambda myeloma protein
Clone:	1-155-2
Isotype:	IgG1 kappa
Specificity:	The mouse monoclonal antibody 1-155-2 recognizes lambda light chains (22.5 kDa) of human immunoglobulin.
Cross-Reactivity (Details):	Human
Purification:	Purified antibody is conjugated with R-phycoerythrin (PE) under optimum conditions. Unconjugated antibody and free fluorochrome are removed by size-exclusion chromatography.

### Target Details

Target:	Lambda-IgLC
---------	-------------

## Target Details

---

Alternative Name:	Lambda light chains ( <a href="#">Lambda-IgLC Products</a> )
Background:	Immunoglobulin classes share the same basic four polypeptide chain structure of two heavy chains (five heavy chains types) and two light chains (kappa, lambda, both having a molecular weight of 22.5 kDa). Kappa and lambda consist of a variable region and a constant region and can easily be differentiated by the antigenic properties of the constant region. The ratio of kappa to lambda is 70:30.,Immunoglobulin lambda, Igl
Molecular Weight:	22.5 kDa

## Application Details

---

Application Notes:	Flow cytometry: The reagent is designed for analysis of human blood cells using 10 µL reagent / 100 µL of whole blood or 10 <sup>6</sup> cells in a suspension. The content of a vial (1 ml) is sufficient for 100 tests. Extracellular and intracellular staining.
Comment:	The purified antibody is conjugated with R-Phycoerythrin (PE) under optimum conditions. The conjugate is purified by size-exclusion chromatography and adjusted for direct use. No reconstitution is necessary.
Restrictions:	For Research Use only

## Handling

---

Reconstitution:	No reconstitution is necessary.
Buffer:	Stabilizing phosphate buffered saline (PBS), pH 7.4, 15 mM sodium azide
Preservative:	Sodium azide
Precaution of Use:	This product contains Sodium azide: a POISONOUS AND HAZARDOUS SUBSTANCE which should be handled by trained staff only.
Handling Advice:	<b>Do not freeze.</b> Avoid prolonged exposure to light.
Storage:	4 °C
Storage Comment:	Store at 2-8°C. Protect from prolonged exposure to light. Do not freeze.

## Publications

---

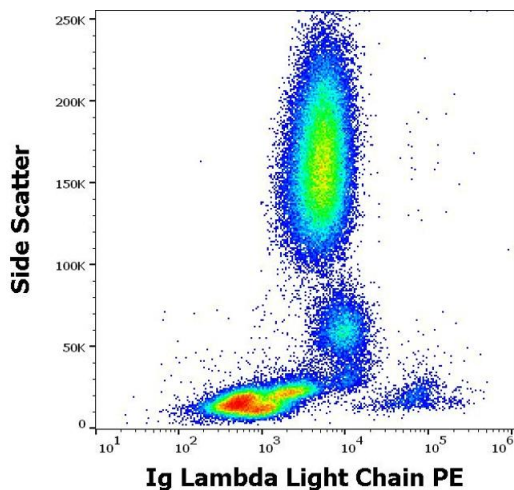
Product cited in:	Tierens, Holte, Warsame, Ikonomidou, Wang, Chan, Delabie: "Low levels of monoclonal small B cells in the bone marrow of patients with diffuse large B-cell lymphoma of activated B-cell type
-------------------	--

but not of germinal center B-cell type." in: **Haematologica**, Vol. 95, Issue 8, pp. 1334-41, (2010) ([PubMed](#)).

Bahler, Pindzola, Swerdlow: "Splenic marginal zone lymphomas appear to originate from different B cell types." in: **The American journal of pathology**, Vol. 161, Issue 1, pp. 81-8, (2002) ([PubMed](#)).

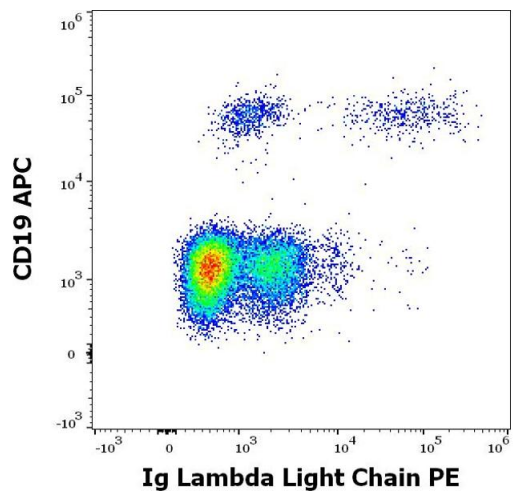
Kubagawa, Gathings, Levitt, Kearney, Cooper: "Immunoglobulin isotype expression of normal pre-B cells as determined by immunofluorescence." in: **Journal of clinical immunology**, Vol. 2, Issue 4, pp. 264-9, (1983) ([PubMed](#)).

Images



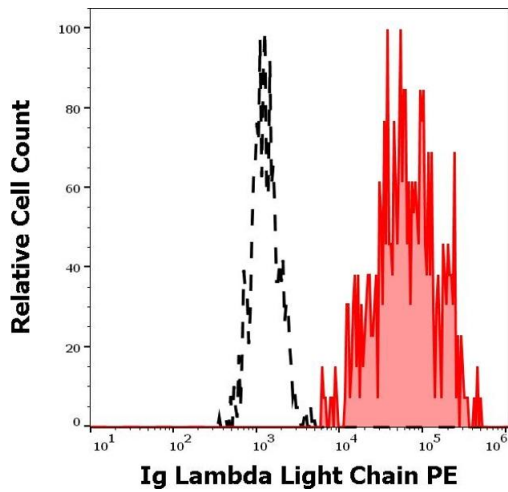
Flow Cytometry

**Image 1.** Flow cytometry surface staining pattern of human peripheral whole blood stained using anti-human Ig Lambda Light Chain (1-155-2) PE antibody (10 µL reagent / 100 µL of peripheral whole blood).



Flow Cytometry

**Image 2.** Flow cytometry multicolor surface staining of human lymphocytes stained using anti-human Ig Lambda Light Chain (1-155-2) PE antibody (10 µL reagent / 100 µL of peripheral whole blood) and anti-human CD19 (LT19) APC antibody (10 µL reagent / 100 µL of peripheral whole blood).



### Flow Cytometry

**Image 3.** Separation of human Ig Lambda Light Chain positive B cells (red-filled) from Ig Lambda Light Chain negative B cells (black-dashed) in flow cytometry analysis (surface staining) of human peripheral whole blood stained using anti-human Ig Lambda Light Chain (1-155-2) PE antibody (10  $\mu$ L reagent / 100  $\mu$ L of peripheral whole blood).