



[Go to Product page](#)

Datasheet for ABIN781545

## anti-PKLR antibody

### 2 Images

#### Overview

Quantity:	0.1 mL
Target:	PKLR
Reactivity:	Human
Host:	Mouse
Clonality:	Monoclonal
Conjugate:	This PKLR antibody is un-conjugated
Application:	Western Blotting (WB), Enzyme Immunoassay (EIA)

#### Product Details

Clone:	AT1E3
Isotype:	IgG1
Specificity:	The antibody recognizes human PKLR. Other species not tested.
Purification:	Protein-G affinity chromatography

#### Target Details

Target:	PKLR
Alternative Name:	PKLR ( <a href="#">PKLR Products</a> )
Background:	PKLR is a pyruvate kinase that catalyzes the transphosphorylation of phosphoenolpyruvate into pyruvate and ATP, which is the rate-limiting step of glycolysis. The PKLR gene encodes the L- and R-type isoenzymes through alternative splicing events under the control of different promoters. The L-type isoform also exists as a tetramer and is upregulated by glucose with

## Target Details

implications in maturity-onset diabetes of the young.Synonyms: PK1, PKL, Pyruvate kinase 1, Pyruvate kinase R/L, Pyruvate kinase isozymes R/L, R-type/L-type pyruvate kinase, Red cell/liver pyruvate kinase

Gene ID: 5313

Pathways: [Ribonucleoside Biosynthetic Process](#)

## Application Details

Application Notes: Optimal working dilution should be determined by the investigator.

Restrictions: For Research Use only

## Handling

Format: Liquid

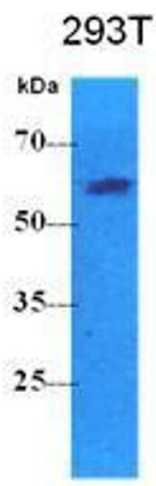
Concentration: 1.0 mg/mL

Buffer: PBS, pH 7.4, containing 0.09 % sodium azide

Preservative: Sodium azide

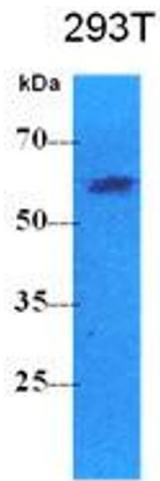
Precaution of Use: This product contains sodium azide: a POISONOUS AND HAZARDOUS SUBSTANCE which should be handled by trained staff only.

## Images



### Western Blotting

Image 1.



Western Blotting

Image 2.