



[Go to Product page](#)

Datasheet for ABIN781798

## anti-Endothelial Cells antibody

### 3 Images

#### Overview

Quantity:	0.1 mg
Target:	Endothelial Cells
Reactivity:	Pig
Host:	Mouse
Clonality:	Monoclonal
Conjugate:	This Endothelial Cells antibody is un-conjugated
Application:	Immunohistochemistry (Frozen Sections) (IHC (fro)), Enzyme Immunoassay (EIA)

#### Product Details

Immunogen:	Porcine platelet extract
Clone:	PE1
Isotype:	IgG2b
Purification:	Affinity chromatography

#### Target Details

Target:	Endothelial Cells
Abstract:	<a href="#">Endothelial Cells Products</a>
Background:	Synonyms: Endothelial Cell marker

## Application Details

---

Application Notes: Optimal working dilution should be determined by the investigator.

Restrictions: For Research Use only

## Handling

---

Reconstitution: Reconstitute by adding 0.5 mL distilled water.

Buffer: Phosphate buffered saline pH 7.2 (PBS), 5 mg/mL bovine serum albumin (BSA) as a stabilizer and 0.09 % sodium azide as a preservative.

Preservative: Sodium azide

Precaution of Use: This product contains sodium azide: a POISONOUS AND HAZARDOUS SUBSTANCE which should be handled by trained staff only.

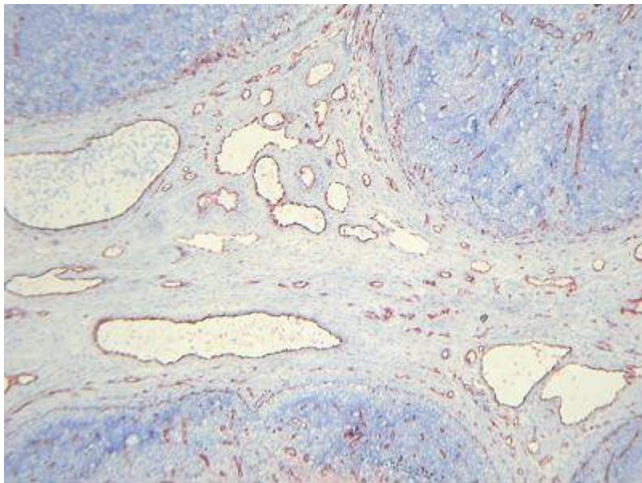
Handling Advice: Avoid repeated freezing and thawing.

Storage: 4 °C/-20 °C

Storage Comment: Prior to reconstitution store at 2-8 °C. Following reconstitution store (in aliquots) at -20 °C.

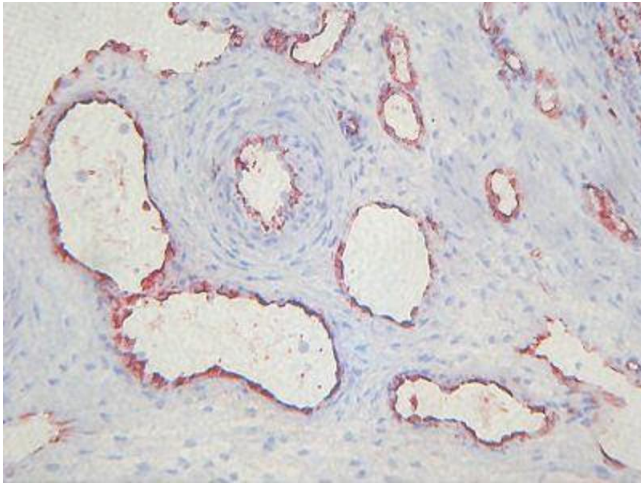
## Images

---



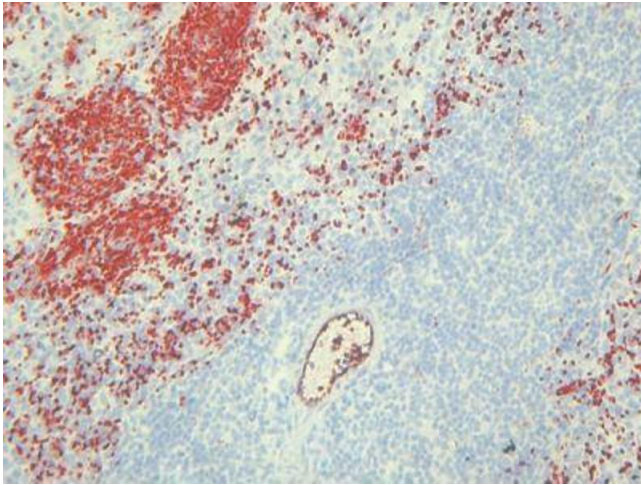
### Immunohistochemistry

Image 1.



**Immunohistochemistry**

**Image 2.**



**Immunohistochemistry**

**Image 3.**