



[Go to Product page](#)

Datasheet for ABIN781949

anti-ACP2 antibody

4 Images

Overview

Quantity:	50 µg
Target:	ACP2
Reactivity:	Human
Host:	Mouse
Clonality:	Monoclonal
Conjugate:	This ACP2 antibody is un-conjugated
Application:	Western Blotting (WB), Immunofluorescence (IF), Immunohistochemistry (Paraffin-embedded Sections) (IHC (p)), Enzyme Immunoassay (EIA)

Product Details

Immunogen:	ACP2 antibody was raised against recombinant protein
Clone:	M1-4A12
Isotype:	IgG2b
Specificity:	This antibody reacts to ACP2 / Acid Phosphatase 2.
Purification:	Affinity chromatography on Protein A

Target Details

Target:	ACP2
Alternative Name:	ACP2 / LAP (ACP2 Products)
Background:	Lysosomal acid phosphatase is comprised of two subunits, alpha and beta, and is chemically

Target Details

and genetically distinct from red cell acid phosphatase. Lysosomal acid phosphatase 2 is a member of a family of distinct isoenzymes which hydrolyze orthophosphoric monoesters to alcohol and phosphate. Acid phosphatase deficiency is caused by mutations in the ACP2 (beta subunit) and ACP3 (alpha subunit) genes. Synonyms: Lysosomal acid phosphatase

Gene ID:	53
NCBI Accession:	NP_001601
UniProt:	P11117

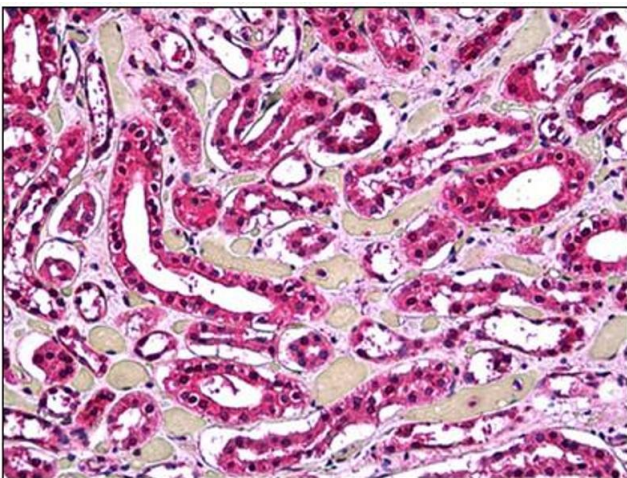
Application Details

Application Notes:	Optimal working dilution should be determined by the investigator.
Restrictions:	For Research Use only

Handling

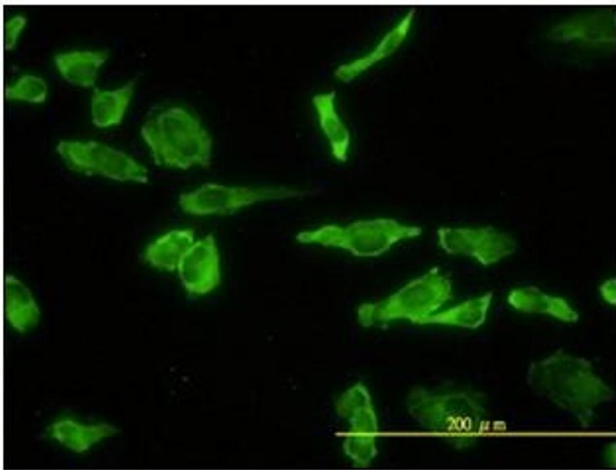
Concentration:	0,41 mg/mL
Buffer:	PBS, pH 7.2
Handling Advice:	Avoid repeated freezing and thawing.
Storage:	4 °C/-20 °C
Storage Comment:	Store the antibody undiluted at 2-8 °C for one month or (in aliquots) at -20 °C for longer.

Images



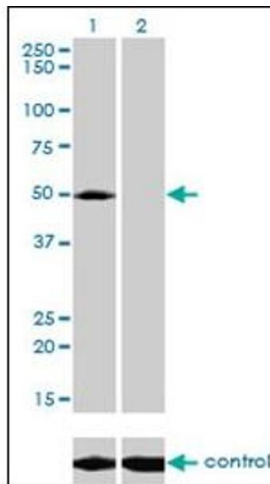
Immunohistochemistry

Image 1.



Immunofluorescence

Image 2.



Western Blotting

Image 3.

Please check the [product details page](#) for more images. Overall 4 images are available for ABIN781949.