



[Go to Product page](#)

Datasheet for ABIN781967

## anti-DLX2 antibody

### 3 Images

#### Overview

Quantity:	50 µg
Target:	DLX2
Reactivity:	Human, Mouse
Host:	Mouse
Clonality:	Monoclonal
Conjugate:	This DLX2 antibody is un-conjugated
Application:	Western Blotting (WB), Immunohistochemistry (Paraffin-embedded Sections) (IHC (p)), Enzyme Immunoassay (EIA)

#### Product Details

Immunogen:	DLX2 antibody was raised against recombinant protein
Clone:	2B12
Isotype:	IgG2a
Specificity:	This antibody reacts to DLX2.
Purification:	Affinity chromatography on Protein A

#### Target Details

Target:	DLX2
Alternative Name:	DLX2 ( <a href="#">DLX2 Products</a> )
Background:	Many vertebrate homeo box-containing genes have been identified on the basis of their

## Target Details

sequence similarity with Drosophila developmental genes. Members of the Dlx gene family contain a homeobox that is related to that of Distal-less (Dll), a gene expressed in the head and limbs of the developing fruit fly. The Distal-less (Dlx) family of genes comprises at least 6 different members, DLX1-DLX6. The DLX proteins are postulated to play a role in forebrain and craniofacial development. Synonyms: DLX-2, Homeobox protein DLX2

Gene ID: 1746

NCBI Accession: [NP\\_004396](#)

UniProt: [Q07687](#)

## Application Details

Application Notes: Optimal working dilution should be determined by the investigator.

Restrictions: For Research Use only

## Handling

Concentration: 0,35 mg/mL

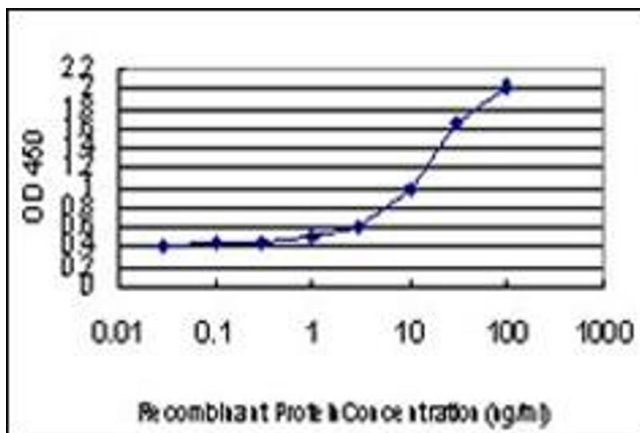
Buffer: PBS, pH 7.2

Handling Advice: Avoid repeated freezing and thawing.

Storage: 4 °C/-20 °C

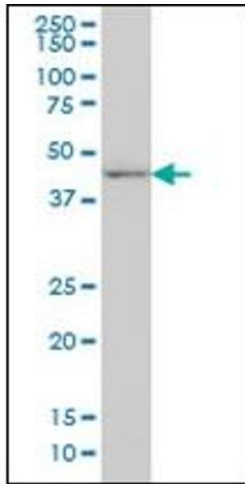
Storage Comment: Store the antibody undiluted at 2-8 °C for one month or (in aliquots) at -20 °C for longer.

## Images



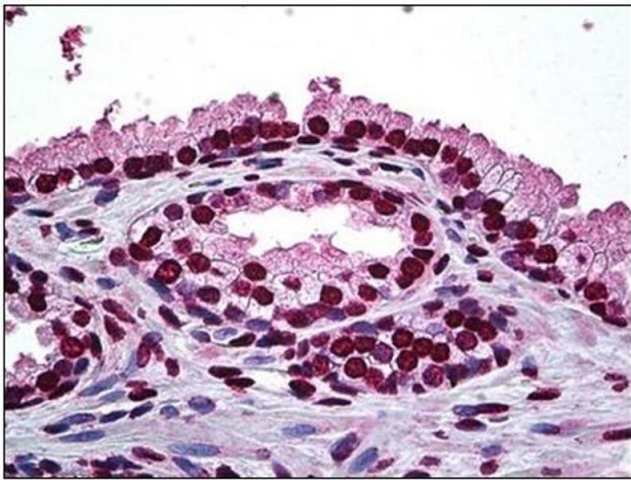
### ELISA

Image 1.



### Western Blotting

Image 2.



### Immunohistochemistry

Image 3.