



[Go to Product page](#)

Datasheet for ABIN782334
anti-RND3 antibody (AA 1-245)

2 Images

Overview

Quantity:	50 µg
Target:	RND3
Binding Specificity:	AA 1-245
Reactivity:	Human
Host:	Mouse
Clonality:	Monoclonal
Conjugate:	This RND3 antibody is un-conjugated
Application:	Western Blotting (WB), Immunohistochemistry (Paraffin-embedded Sections) (IHC (p)), Enzyme Immunoassay (EIA)

Product Details

Immunogen:	RND3 antibody was raised against RND3 (AAH12513, 1 a.a. ~ 245 a.a) full-length recombinant protein with GST tag.
Clone:	1D2
Isotype:	IgG2a
Specificity:	Recognizes RND3 / ARHE.
Cross-Reactivity (Details):	Species reactivity (tested):Human.
Purification:	Protein A Chromatography

Target Details

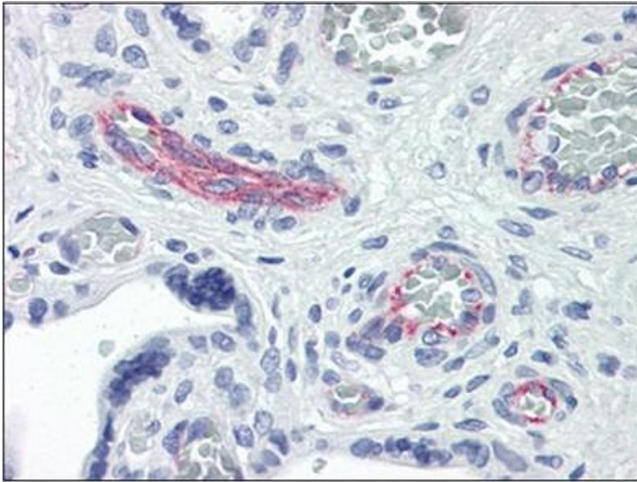
Target:	RND3
Alternative Name:	RND3 / ARHE (RND3 Products)
Background:	Rho-related GTP-binding protein RhoE, also known as RND3, is a small GTPase of the Ras superfamily that regulate the organization of the actin cytoskeleton in response to extracellular growth factors. RND3 activity leads to a decrease in stress fibers and increased cell migration, at least in part through regulation of the Rho-dependent kinase ROCK1. Also, RND3 has been implicated in inhibition of DNA-damage induced apoptosis and cell cycle arrest. Synonyms: MemB protein, RHO8, RHOE, Rho family GTPase 3, Rho-related GTP-binding protein RhoE
Gene ID:	390
NCBI Accession:	NP_005159
UniProt:	P61587

Application Details

Application Notes:	Optimal working dilution should be determined by the investigator.
Restrictions:	For Research Use only

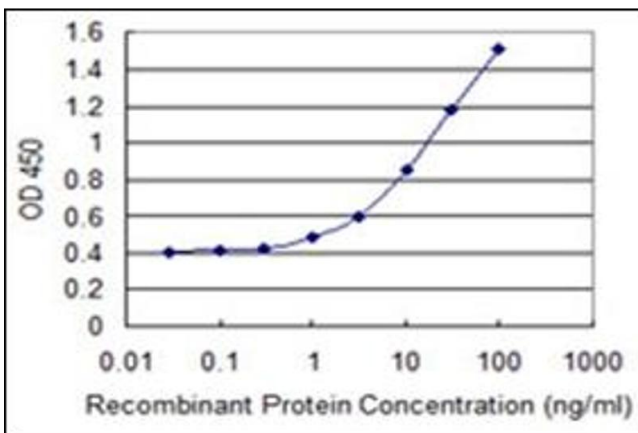
Handling

Concentration:	1.0 mg/mL
Buffer:	PBS, pH 7.2
Handling Advice:	Avoid freeze-thaw cycles.
Storage:	-20 °C
Storage Comment:	Store the antibody (in aliquots) at -20 °C or -80 °C.



Immunohistochemistry

Image 1.



ELISA

Image 2.