

Datasheet for ABIN782404
anti-Filamin A antibody (AA 1-839)[Go to Product page](#)

3 Images

Overview

Quantity:	50 µg
Target:	Filamin A (FLNA)
Binding Specificity:	AA 1-839
Reactivity:	Human
Host:	Mouse
Clonality:	Monoclonal
Conjugate:	This Filamin A antibody is un-conjugated
Application:	Western Blotting (WB), Immunohistochemistry (Paraffin-embedded Sections) (IHC (p)), Enzyme Immunoassay (EIA)

Product Details

Immunogen:	FLNA antibody was raised against fLNA (AAH14654, 1 a.a. ~ 839 a.a) full length recombinant protein with GST tag. MW of the GST tag alone is 26 KDa.
Clone:	4E10-1B2
Isotype:	IgG1
Specificity:	This antibody reacts to FLNA / FMD.
Purification:	Affinity chromatography on Protein A

Target Details

Target:	Filamin A (FLNA)
---------	------------------

Target Details

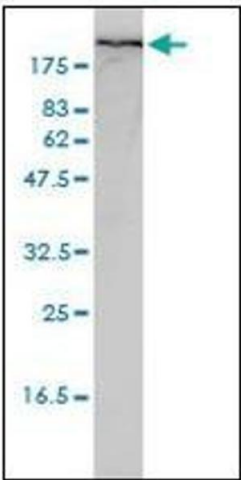
Alternative Name:	Filamin-A (FLNA Products)
Background:	Promotes orthogonal branching of actin filaments and links actin filaments to membrane glycoproteins. Anchors various transmembrane proteins to the actin cytoskeleton and serves as a scaffold for a wide range of cytoplasmic signaling proteins. Interaction with FLNA may allow neuroblast migration from the ventricular zone into the cortical plate. Tethers cell surface-localized furin, modulates its rate of internalization and directs its intracellular trafficking.Synonyms: Actin-binding protein 280, Alpha-filamin, Endothelial actin-binding protein, FLN, FLN1, FLNA, Filamin-1, Non-muscle filamin
Gene ID:	2316
NCBI Accession:	NP_001104026
UniProt:	P21333
Pathways:	TCR Signaling , Maintenance of Protein Location

Application Details

Application Notes:	Optimal working dilution should be determined by the investigator.
Restrictions:	For Research Use only

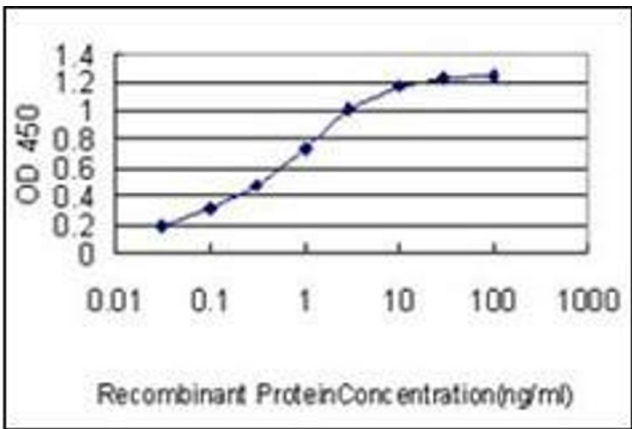
Handling

Concentration:	0,5 mg/mL
Buffer:	PBS, pH 7.2
Handling Advice:	Avoid repeated freezing and thawing.
Storage:	-20 °C
Storage Comment:	Store the antibody at -20 °C to -80 °C.



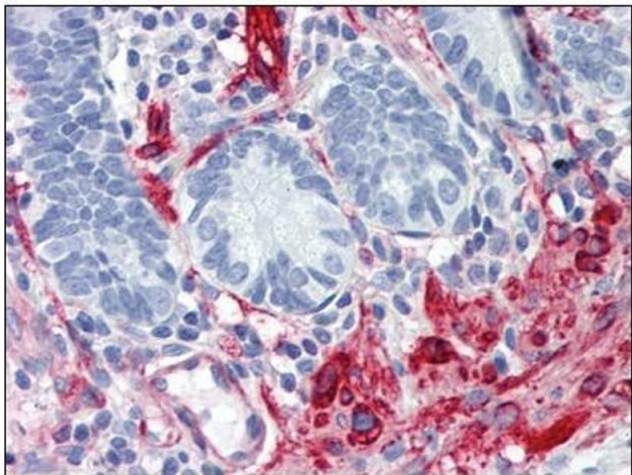
Western Blotting

Image 1.



ELISA

Image 2.



Immunohistochemistry

Image 3.