

Datasheet for ABIN782426
anti-MAG antibody (AA 119-209)[Go to Product page](#)

3 Images

Overview

Quantity:	50 µg
Target:	MAG
Binding Specificity:	AA 119-209
Reactivity:	Human
Host:	Mouse
Clonality:	Monoclonal
Conjugate:	This MAG antibody is un-conjugated
Application:	Western Blotting (WB), Immunohistochemistry (Paraffin-embedded Sections) (IHC (p)), Enzyme Immunoassay (EIA)

Product Details

Immunogen:	MAG antibody was raised against mAG (NP_002352, 119 a.a. ~ 209 a.a) partial recombinant protein with GST tag. MW of the GST tag alone is 26 KDa.
Clone:	3C7
Isotype:	IgG1
Specificity:	This antibody reacts to MAG.
Purification:	Affinity chromatography on Protein A

Target Details

Target:	MAG
---------	-----

Target Details

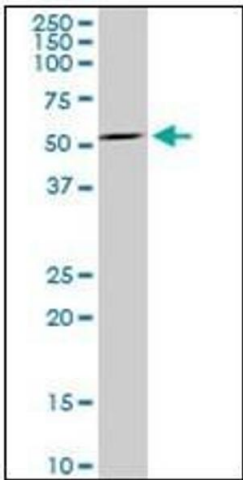
Alternative Name:	Myelin-Associated Glycoprotein (MAG) (MAG Products)
Background:	<p>Myelin-associated glycoprotein (MAG), a member of the immunoglobulin superfamily, is a membrane glycoprotein of 100 kDa, and is thought to be involved in the process of myelination. Axonal regeneration in the adult central nervous system (CNS) is limited by two proteins in myelin, Nogo and MAG. MAG has been implicated in the inhibition of nerve regeneration in the CNS. Synonyms: GMA, MAG, Siglec-4a</p>
Gene ID:	4099
NCBI Accession:	NP_002352
UniProt:	P20916
Pathways:	Neurotrophin Signaling Pathway

Application Details

Application Notes:	Optimal working dilution should be determined by the investigator.
Restrictions:	For Research Use only

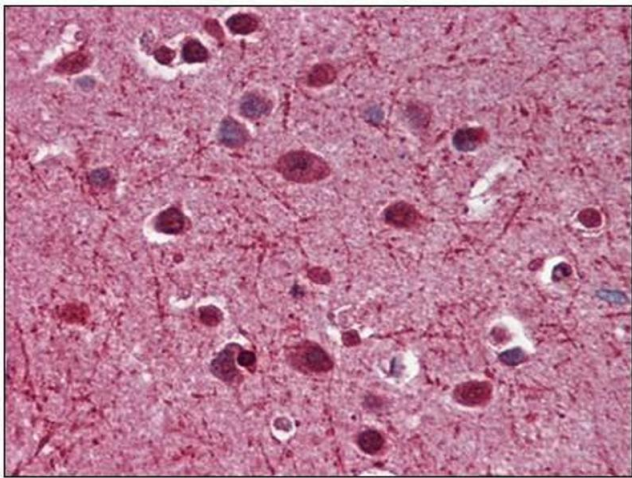
Handling

Concentration:	0,24 mg/mL
Buffer:	PBS, pH 7.2
Handling Advice:	Avoid repeated freezing and thawing.
Storage:	-20 °C
Storage Comment:	Store the antibody at -20 °C to -80 °C.



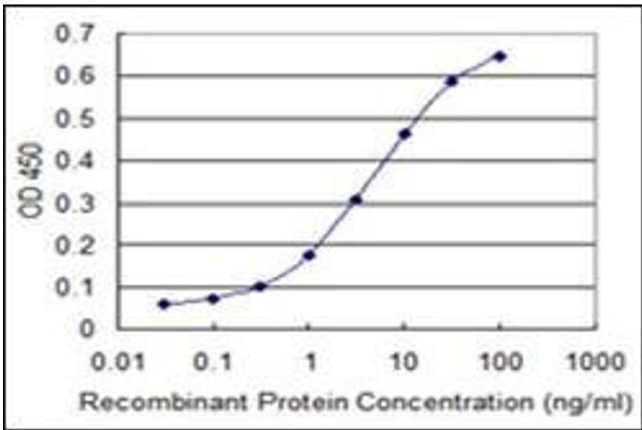
Western Blotting

Image 1.



Immunohistochemistry

Image 2.



ELISA

Image 3.