

Datasheet for ABIN782446

## anti-C3AR1 antibody (AA 63-8) (FITC)



[Go to Product page](#)

### 1 Image

#### Overview

Quantity:	0.1 mg
Target:	C3AR1
Binding Specificity:	AA 63-8
Reactivity:	Rat
Host:	Mouse
Clonality:	Monoclonal
Conjugate:	This C3AR1 antibody is conjugated to FITC
Application:	Flow Cytometry (FACS), Immunohistochemistry (Frozen Sections) (IHC (fro))

#### Product Details

Immunogen:	RBL-2H3 transfectants expressing rat C3aR Donor: BALB/c Fusion Partner: X63-Ag8.653
Clone:	74
Isotype:	IgG1
Specificity:	This rat C3a receptor antibody detects a recombinant peptide corresponding to amino acids 161-321 of the large extracellular loop structure, which shares 34 % homology with mouse and human. Deduced amino acid sequences of human/rat C3aR is 58.5 % and 90.7 % with rat/mouse.
Purification:	Affinity chromatography on Protein G

#### Target Details

Target:	C3AR1
---------	-------

## Target Details

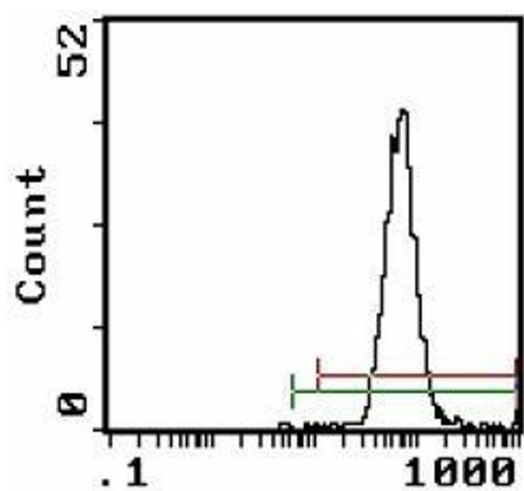
Abstract:	<a href="#">C3AR1 Products</a>
Background:	C3aR binds to anaphylotoxin C3a which, among other things, is involved in mast cell degranulation and recruitment of immune cells to the site of inflammation. Activation of the complement cascade produces various fragments, including C3a and C5a. C3aR is characterized by seven transmembrane domains including a large extracellular loop which is coupled to a Gi protein. C3aR expression is detected on glial cells, neurons and cells belonging to the mononuclear phagocyte system. C3aR expression was shown to moderately increase after LPS stimulation.Synonyms: AZ3B, C3AR, C3AR1, C3R1, C3a anaphylatoxin chemotactic receptor, C3a-R, HNFAG09
Gene ID:	84007
NCBI Accession:	<a href="#">NP_114449</a>
UniProt:	<a href="#">O55197</a>
Pathways:	<a href="#">Complement System</a>

## Application Details

Application Notes:	Optimal working dilution should be determined by the investigator.
Restrictions:	For Research Use only

## Handling

Concentration:	0,1 mg/mL
Buffer:	PBS containing 0.02 % sodium azide (NaN3) as preservative and EIA grade BSA was added as a stabilizing protein to bring the total protein concentration to 4-5 mg/mL.
Preservative:	Sodium azide
Precaution of Use:	This product contains sodium azide: a POISONOUS AND HAZARDOUS SUBSTANCE which should be handled by trained staff only.
Handling Advice:	Avoid repeated freezing and thawing.
Storage:	4 °C/-20 °C
Storage Comment:	Store the antibody undiluted at 2-8 °C for one month or (in aliquots) at -20 °C for longer.



Flow Cytometry

Image 1.