

Datasheet for ABIN783046

anti-CCL27 antibody

4 Images

[Go to Product page](#)

Overview

Quantity:	50 µg
Target:	CCL27
Reactivity:	Human
Host:	Rabbit
Clonality:	Polyclonal
Conjugate:	This CCL27 antibody is un-conjugated
Application:	Western Blotting (WB), Immunofluorescence (IF), Enzyme Immunoassay (EIA)

Product Details

Immunogen:	Highly pure recombinant Human CTACK.
Specificity:	Recognizes Human CTACK. Other species not tested.
Purification:	Affinity Chromatography employing an immobilized Human CTACK matrix

Target Details

Target:	CCL27
Alternative Name:	ESkine / CCL27 (CCL27 Products)
Background:	<p>CTACK is a keratinocyte-derived CC chemokine which signals through the CCR10 receptor. Both CTACK and CCR10 are expressed in normal and irritated epithelial cells. CTACK selectively attracts CLA+ T-cells and directs them into the skin. CTACK contains the four highly conserved cysteine residues present in most CC chemokines. The mature protein contains 88 amino acid residues. Synonyms: C-C motif chemokine 27, CC chemokine ILC, CTACK, Cutaneous T-cell-</p>

Target Details

	attracting chemokine, IL-11 R-alpha-locus chemokine, ILC, SCYA27, Skinkine, Small-inducible cytokine A27
Gene ID:	10850
NCBI Accession:	NP_006655
UniProt:	Q9Y4X3

Application Details

Application Notes:	Optimal working dilution should be determined by the investigator.
Restrictions:	For Research Use only

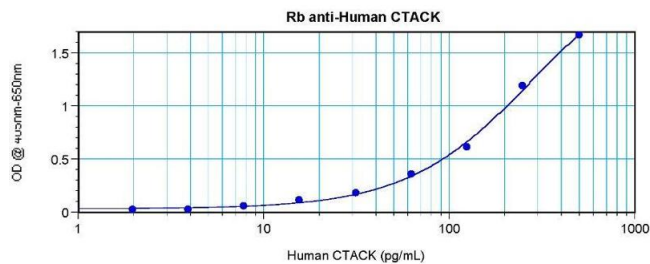
Handling

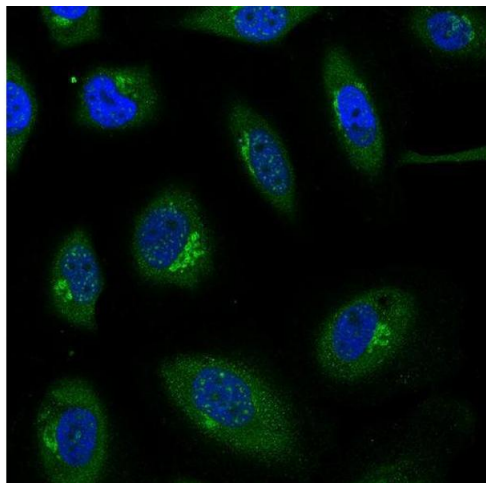
Reconstitution:	Centrifuge vial prior to opening. Restore in sterile water to a concentration of 0.1-1.0 mg/mL.
Buffer:	PBS, pH 7.2 without preservatives
Preservative:	Without preservative
Handling Advice:	Avoid repeated freezing and thawing.
Storage:	-20 °C
Storage Comment:	Store the lyophilized antibody at -20 °C. Following reconstitution it is stable for two weeks at 2-8 °C. Frozen aliquots are stable for 6 months when stored at -20 °C.
Expiry Date:	6 months

Images

Enzyme Immunoassay

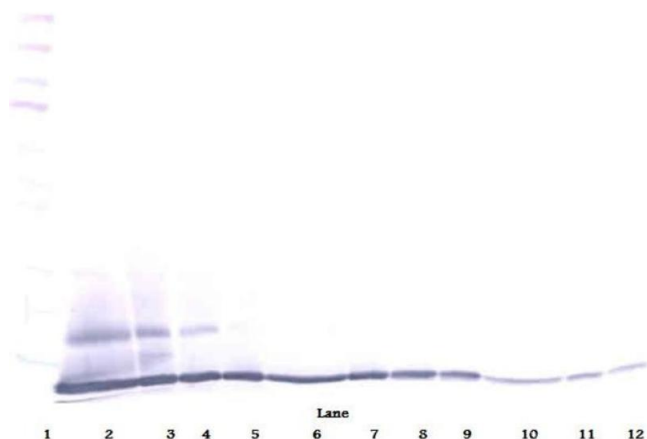
Image 1. Sandwich ELISA using ESkin / CCL27 antibody





Immunofluorescence

Image 2. Immunofluorescence: This antibody stained HeLa cells. The primary antibody was incubated at 3.0 mg/ml overnight at 4°C followed by a fluorescent labeled secondary antibody. *Information and photo are courtesy of the Cell Profiling group, SciLifeLab Stockholm.*



Western Blotting

Image 3. Western Blot (Reduced) using ESkine / CCL27 antibody

Please check the [product details page](#) for more images. Overall 4 images are available for ABIN783046.