

Datasheet for ABIN783231
anti-Synaptogyrin 1 antibody

2 Images

[Go to Product page](#)

Overview

Quantity:	50 µg
Target:	Synaptogyrin 1 (SYNGR1)
Reactivity:	Human, Mouse, Rat
Host:	Rabbit
Clonality:	Polyclonal
Conjugate:	This Synaptogyrin 1 antibody is un-conjugated
Application:	Western Blotting (WB), Immunohistochemistry (Paraffin-embedded Sections) (IHC (p)), Enzyme Immunoassay (EIA)

Product Details

Immunogen:	SYNGR1 antibody was raised against synthetic peptide - KLH conjugated Genename: SYNGR1
Specificity:	This antibody reacts to the internal region of Synaptogyrin 1a (SYNGR1).
Cross-Reactivity (Details):	Species reactivity (expected):Mouse and Rat. Species reactivity (tested):Human.
Purification:	Immunoaffinity Chromatography

Target Details

Target:	Synaptogyrin 1 (SYNGR1)
Alternative Name:	Synaptogyrin-1 / SYNGR1 (SYNGR1 Products)
Gene ID:	9145

Target Details

NCBI Accession:	NP_004702
UniProt:	O43759
Pathways:	Regulation of long-term Neuronal Synaptic Plasticity

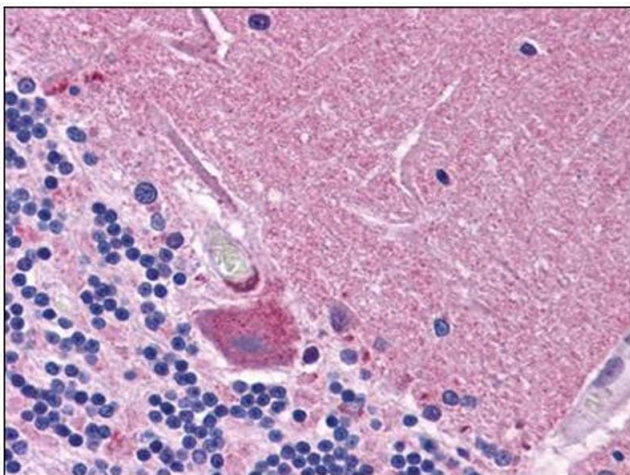
Application Details

Application Notes:	Optimal working dilution should be determined by the investigator.
Restrictions:	For Research Use only

Handling

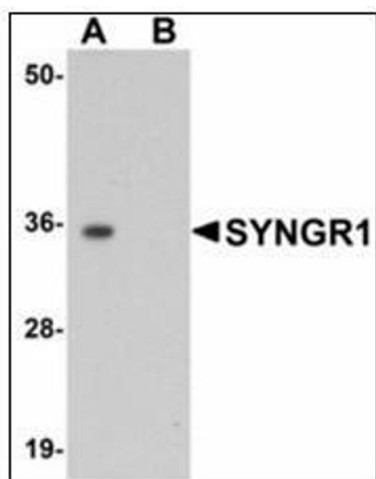
Concentration:	1,0 mg/mL
Buffer:	PBS containing 0.02 % sodium azide as preservative
Preservative:	Sodium azide
Precaution of Use:	This product contains sodium azide: a POISONOUS AND HAZARDOUS SUBSTANCE which should be handled by trained staff only.
Storage:	4 °C
Storage Comment:	Store the antibody undiluted at 2-8 °C.

Images



Immunohistochemistry (Paraffin-embedded Sections)

Image 1. Human Brain, Cerebellum: Formalin-Fixed, Paraffin-Embedded (FFPE)



Western Blotting

Image 2. Western blot analysis of SYNGR1 in rat brain tissue lysate with SYNGR1 antibody at 1 $\mu\text{g/ml}$ in (A) the absence and (B) the presence of blocking peptide.