

Datasheet for ABIN783247
anti-STEAP2 antibody (AA 455-467)[Go to Product page](#)

2 Images

Overview

Quantity:	50 µg
Target:	STEAP2
Binding Specificity:	AA 455-467
Reactivity:	Human
Host:	Rabbit
Clonality:	Polyclonal
Conjugate:	This STEAP2 antibody is un-conjugated
Application:	Immunohistochemistry (Paraffin-embedded Sections) (IHC (p)), Enzyme Immunoassay (EIA)

Product Details

Immunogen:	Synthetic peptide residues 455-467 ISRKLKRIKKGWEKSQ of the 56 kD human STEAP2. Genename: STEAP2
Isotype:	IgG
Specificity:	This antibody reacts to Six Transmembrane Epithelial Antigen Of The Prostate 2 (STEAP2).
Purification:	Immunoaffinity Chromatography

Target Details

Target:	STEAP2
Alternative Name:	STEAP2 / STAMP1 (STEAP2 Products)
Background:	Stamp1/Steap2 is highly expressed in prostate. It is localized to the Golgi complex,

Target Details

predominantly to the trans-Golgi network and to the plasma membrane. It is thought to play an important role in normal prostate and in prostate cancer progression as it showed increased expression in androgen-independent prostate cancer xenografts. Synonyms: IPCA-1, IPCA1, Metalloreductase STEAP2, PCANAP1, PUMPCn, Prostate cancer-associated protein 1, Protein upregulated in metastatic prostate cancer, STEAP-2, STMP, Six-transmembrane epithelial antigen of prostate 2, SixTransMembrane protein of prostate 1

Gene ID: 261729

NCBI Accession: [NP_001035755](#)

UniProt: [Q8NFT2](#)

Pathways: [Transition Metal Ion Homeostasis](#)

Application Details

Application Notes: Optimal working dilution should be determined by the investigator.

Restrictions: For Research Use only

Handling

Concentration: 1,0 mg/mL

Buffer: PBS containing 0.02 % sodium azide as preservative

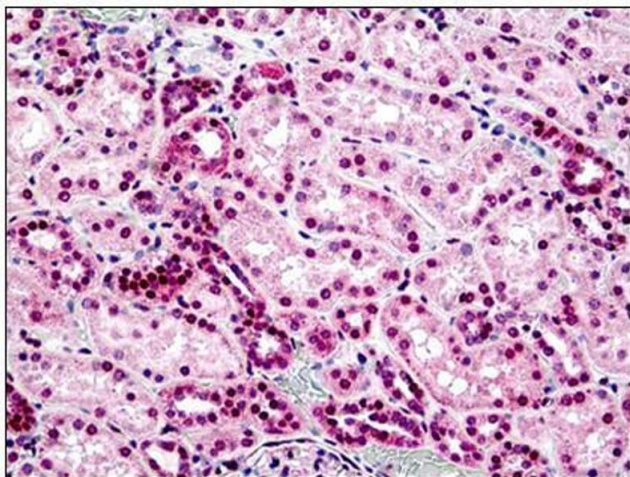
Preservative: Sodium azide

Precaution of Use: This product contains sodium azide: a POISONOUS AND HAZARDOUS SUBSTANCE which should be handled by trained staff only.

Handling Advice: Avoid repeated freezing and thawing.

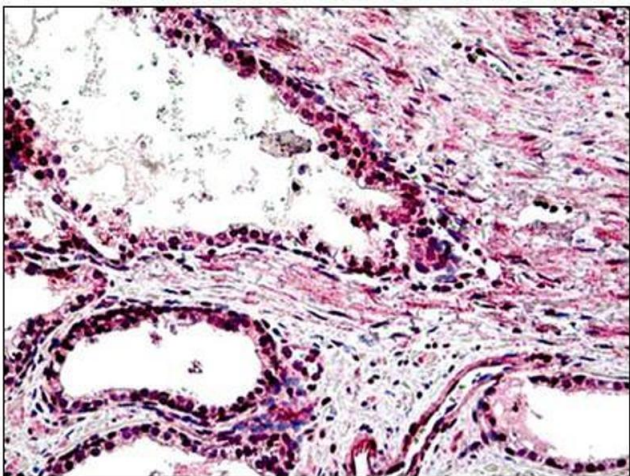
Storage: 4 °C/-20 °C

Storage Comment: Store the antibody undiluted at 2-8 °C for one month or (in aliquots) at -20 °C for longer.



Immunohistochemistry (Paraffin-embedded Sections)

Image 1. Human Kidney: Formalin-Fixed, Paraffin-Embedded (FFPE)



Immunohistochemistry (Paraffin-embedded Sections)

Image 2. Human Prostate: Formalin-Fixed, Paraffin-Embedded (FFPE)