

Datasheet for ABIN783343  
**anti-Klotho antibody (Center)**

## 3 Images

[Go to Product page](#)

## Overview

Quantity:	0.1 mg
Target:	Klotho (KL)
Binding Specificity:	Center
Reactivity:	Human, Mouse, Rat
Host:	Rabbit
Clonality:	Polyclonal
Conjugate:	This Klotho antibody is un-conjugated
Application:	Western Blotting (WB), Immunohistochemistry (Paraffin-embedded Sections) (IHC (p)), Enzyme Immunoassay (EIA), Immunofluorescence (IF)

## Product Details

Immunogen:	16 amino acid peptide near the center of human KLOTHO
Specificity:	This antibody detects Klotho at center.
Cross-Reactivity (Details):	Species reactivity (tested):Human, mouse, rat
Purification:	Affinity chromatography purified via peptide column

## Target Details

Target:	Klotho (KL)
Alternative Name:	Klotho ( <a href="#">KL Products</a> )
Background:	KLOTHO is the systemic anti-aging hormone within the glycosidase1 superfamily. It encodes a

## Target Details

type I membrane protein that is abundant in the kidney and brain. In mice, a deficiency in KLOTHO expression leads to various systemic phenotypes resembling human aging such as arteriosclerosis, osteoporosis, and skin atrophy together with growth retardation, short life-span and infertility. Transgenic mice overexpressing KLOTHO have an extended life span by inhibiting insulin/IGF1 signaling. KLOTHO is involved in the regulation of calcium/phosphorus homeostasis by inhibiting the synthesis of active vitamin D and identified as a potential tumor suppressor. Three isoforms of KLOTHO are known to exist. Synonyms: EC 3.2.1.31, KL, Klotho

Gene ID: 9365

NCBI Accession: [NP\\_004786](#)

UniProt: [Q9UEF7](#)

Pathways: [Fc-epsilon Receptor Signaling Pathway](#), [EGFR Signaling Pathway](#), [Neurotrophin Signaling Pathway](#), [Hormone Activity](#), [Growth Factor Binding](#)

## Application Details

Application Notes: Optimal working dilution should be determined by the investigator.

Restrictions: For Research Use only

## Handling

Buffer: PBS containing 0.02 % sodium azide

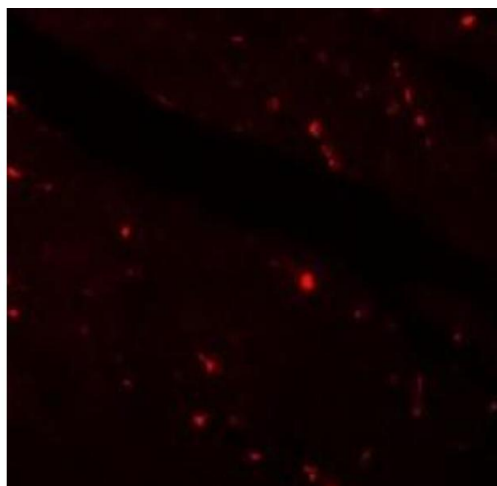
Preservative: Sodium azide

Precaution of Use: This product contains sodium azide: a POISONOUS AND HAZARDOUS SUBSTANCE which should be handled by trained staff only.

Handling Advice: Avoid repeated freezing and thawing.

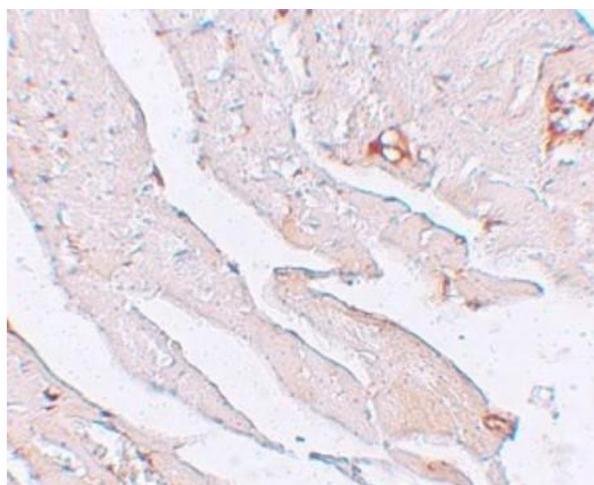
Storage: 4 °C/-20 °C

Storage Comment: Store at 2 - 8 °C for up to three months or (in aliquots) at -20 °C for longer.



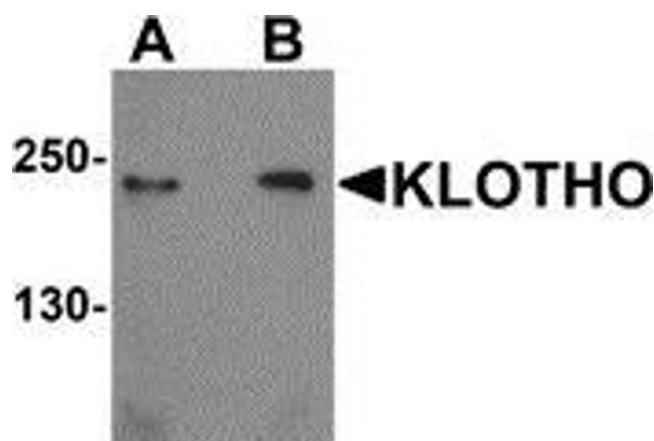
#### Immunofluorescence

**Image 1.** Immunofluorescence of KLOTHO in mouse heart tissue with KLOTHO antibody at 20 ug/ml.



#### Immunohistochemistry (Paraffin-embedded Sections)

**Image 2.** IHC in mouse brain tissue with antibody at 2.5 ug/mL



#### Western Blotting

**Image 3.** Western blot analysis of KLOTHO in rat heart tissue lysate with KLOTHO antibody at (A) 1 and (B) 2  $\mu$ g/ml.