

Datasheet for ABIN783361
anti-ZBTB7A antibody (N-Term)

2 Images

[Go to Product page](#)

Overview

Quantity:	0.1 mg
Target:	ZBTB7A
Binding Specificity:	N-Term
Reactivity:	Human, Mouse
Host:	Rabbit
Clonality:	Polyclonal
Conjugate:	This ZBTB7A antibody is un-conjugated
Application:	Western Blotting (WB), Immunohistochemistry (Paraffin-embedded Sections) (IHC (p)), Immunofluorescence (IF), Enzyme Immunoassay (EIA)

Product Details

Immunogen:	16 amino acid peptide near the amino terminus of Human ZBTB7A
Isotype:	IgG
Specificity:	This antibody detects ZBTB7A at N-term. At least two isoforms of ZBTB7A are known to exist, this antibody will recognize both isoforms. This antibody is predicted not to cross-react with other ZBTB protein family members.
Cross-Reactivity (Details):	Species reactivity (tested): Human, Mouse.
Purification:	Affinity Chromatography purified via peptide column

Target Details

Target:	ZBTB7A
---------	--------

Target Details

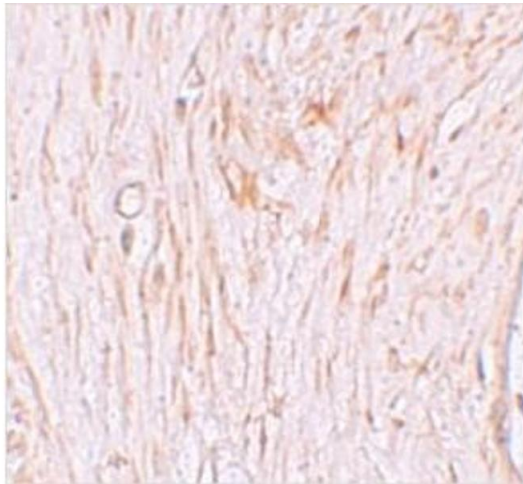
Alternative Name:	ZBTB7A / Pokemon (ZBTB7A Products)
Background:	<p>The ZBTB family of proteins is comprised of diverse zinc finger proteins that also contain a BTB (BR-C, ttk and bab) domain. ZBTB7A, also known as LRF, was initially identified as a potential target of the LAZ-3/BCL-6 oncogene. Later reports demonstrated that it could bind to the wild-type IST (inducer of short transcripts) elements of HIV-1 long terminal repeats (LTRs) and stimulate Tat activity on the HIV-1 LTR. More recently it ZBTB7A has been recognized as a proto-oncogene whose overexpression contributes to malignancy in breast cancer and functions as a co-repressor of the androgen receptor in prostate cancer cells. Synonyms: FBI-1, FBI1, Factor binding IST protein 1, LRF, Leukemia/lymphoma-related factor, POK (POZ and Krueppel) erythroid myeloid ontogenic factor, TIP21, TTF-I-interacting peptide 21, ZBTB7, Zinc finger and BTB domain-containing protein 7A</p>
Gene ID:	51341
NCBI Accession:	NP_056982
UniProt:	O95365

Application Details

Application Notes:	Optimal working dilution should be determined by the investigator.
Restrictions:	For Research Use only

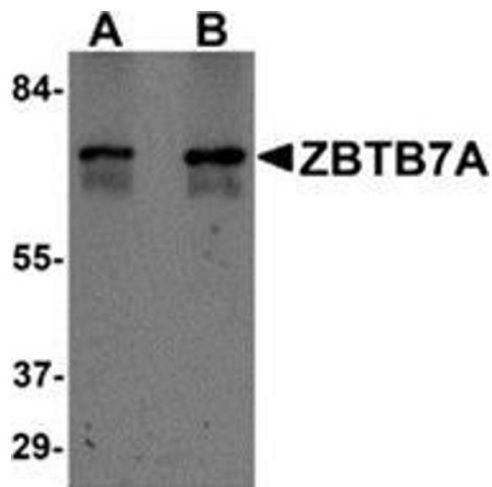
Handling

Concentration:	1.0 mg/mL
Buffer:	PBS, 0.02 % Sodium Azide
Preservative:	Sodium azide
Precaution of Use:	This product contains sodium azide: a POISONOUS AND HAZARDOUS SUBSTANCE which should be handled by trained staff only.
Handling Advice:	Avoid repeated freezing and thawing.
Storage:	4 °C/-20 °C
Storage Comment:	Store undiluted at 2-8 °C for one month or (in aliquots) at -20 °C for longer.



Immunohistochemistry (Paraffin-embedded Sections)

Image 1. Immunohistochemistry of ZBTB7A in Human ovary tissue with ZBTB7A / Pokemon antibody at 2.5 µg/ml.



Western Blotting

Image 2. Western blot analysis of ZBTB7A in Human ovary tissue lysate with ZBTB7A / Pokemon antibody at (A) 1 and (B) 2 µg/ml.