

Datasheet for ABIN783381
anti-LRRTM2 antibody (C-Term)



[Go to Product page](#)

1 Image

Overview

Quantity:	0.1 mg
Target:	LRRTM2
Binding Specificity:	C-Term
Reactivity:	Human, Rat, Mouse
Host:	Rabbit
Clonality:	Polyclonal
Conjugate:	This LRRTM2 antibody is un-conjugated
Application:	Western Blotting (WB), Enzyme Immunoassay (EIA)

Product Details

Immunogen:	17 amino acid peptide near the carboxy terminus of human LRRTM2
Specificity:	This antibody detects LRRTM2 at C-term. LRRTM2 antibody is predicted to not cross-react with other LRRTM family members.
Cross-Reactivity (Details):	Species reactivity (tested): Human, mouse, rat
Purification:	Affinity chromatography purified via peptide column

Target Details

Target:	LRRTM2
Alternative Name:	LRRTM2 (LRRTM2 Products)
Background:	The Leucine-rich repeat transmembrane neuronal proteins (LRRTMs) are differentially

Target Details

expressed in the nervous system and were recently found to instruct presynaptic and mediate postsynaptic glutamatergic differentiation, with LRRTM1 and LRRTM2 most potent at inducing presynaptic differentiation. Each LRRTM protein is a type I transmembrane containing ten extracellular leucine-rich repeats and a short intracellular tail and has a developmentally regulated pattern distinct from all others. LRRTM2 interacts with PSD-95 and regulates the surface expression of AMPA receptors. LRRTM2 also functions as a neurexin ligand, binding both Neurexin 1-alpha and -beta, suggesting that LRRTM2-Neurexin1 interaction plays a critical role in regulatory excitatory synapse development. Synonyms: KIAA0416, LRRN2, Leucine-rich repeat neuronal 2 protein, Leucine-rich repeat transmembrane neuronal protein 2

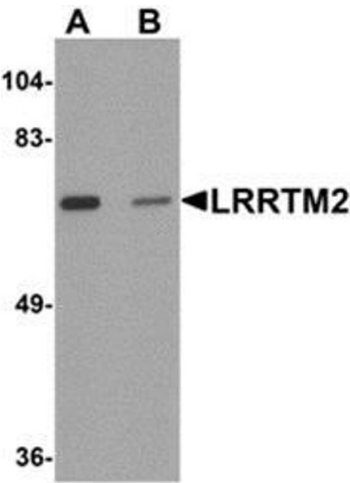
Gene ID:	26045
NCBI Accession:	NP_056379
UniProt:	O43300
Pathways:	Synaptic Membrane

Application Details

Application Notes:	Optimal working dilution should be determined by the investigator.
Restrictions:	For Research Use only

Handling

Buffer:	PBS containing 0.02 % sodium azide
Preservative:	Sodium azide
Precaution of Use:	This product contains sodium azide: a POISONOUS AND HAZARDOUS SUBSTANCE which should be handled by trained staff only.
Handling Advice:	Avoid repeated freezing and thawing.
Storage:	4 °C/-20 °C
Storage Comment:	Store at 2 - 8 °C for up to three months or (in aliquots) at -20 °C for longer.



Western Blotting

Image 1. Western blot analysis of LRRTM2 in SK-N-SH cell lysate with LRRTM2 antibody at 1 µg/ml in (A) the absence and (B) the presence of blocking peptide.