

Datasheet for ABIN783498
anti-GEMC1 antibody (Center)[Go to Product page](#)

1 Image

Overview

Quantity:	0.1 mg
Target:	GEMC1 (GMNC)
Binding Specificity:	Center
Reactivity:	Human
Host:	Rabbit
Clonality:	Polyclonal
Conjugate:	This GEMC1 antibody is un-conjugated
Application:	Western Blotting (WB), Enzyme Immunoassay (EIA)

Product Details

Immunogen:	19 amino acid peptide near the center of human GEMC1
Specificity:	This antibody detects GEMC1 at Center.
Cross-Reactivity (Details):	Species reactivity (tested): Human, mouse
Purification:	Affinity chromatography purified via peptide column

Target Details

Target:	GEMC1 (GMNC)
Alternative Name:	GEMC1 (GMNC Products)
Background:	The Geminin coiled-coil domain-containing protein 1 (GEMC1) is a highly conserved protein that is required for chromosomal replication. GEMC1 contains a region similar to the coiled-coil

Target Details

domain of geminin, an essential vertebrate replication protein in which the coiled-coil domain is required for the function. GEMC1 binds to the checkpoint and replication factor TopBP1, allowing the binding of GEMC1 to chromatin during pre-replication complex formation. GEMC1 also directly interacts with replication factors Cdc45 and Cdk2-CyclinE and stimulates the initiation of DNA replication. Depletion of GEMC1 by siRNA in embryonic and somatic vertebrate cells prevents DNA replication due to impairment of Cdc45 loading onto chromatin, suggesting GEMC1 promotes initiation of DNA replication by mediating TopBP1 and Cdk2 dependent recruitment of Cdc45 onto replication origins. Synonyms: Geminin coiled-coil domain-containing protein 1

Gene ID: 647309

NCBI Accession: [NP_001140158](#)

UniProt: [A6NCL1](#)

Application Details

Application Notes: Optimal working dilution should be determined by the investigator.

Restrictions: For Research Use only

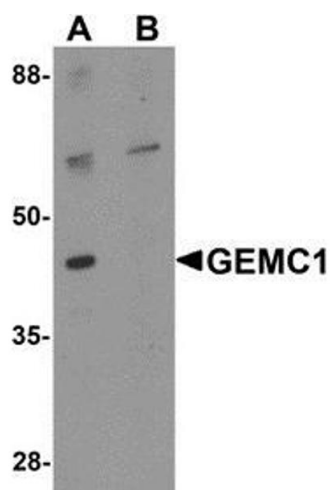
Handling

Buffer: PBS containing 0.02 % sodium azi

Handling Advice: Avoid repeated freezing and thawing.

Storage: 4 °C/-20 °C

Storage Comment: Store at 2 - 8 °C for up to three months or (in aliquots) at -20 °C for longer.



Western Blotting

Image 1. Western blot analysis of GEMC1 in mouse heart tissue lysate with GEMC1 antibody at 1 µg/mL in (A) the absence and (B) the presence of blocking peptide